

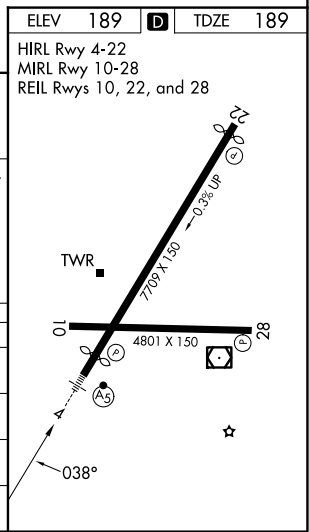
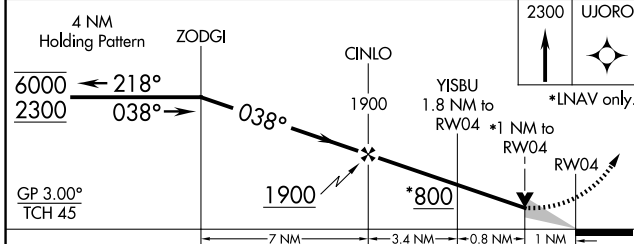
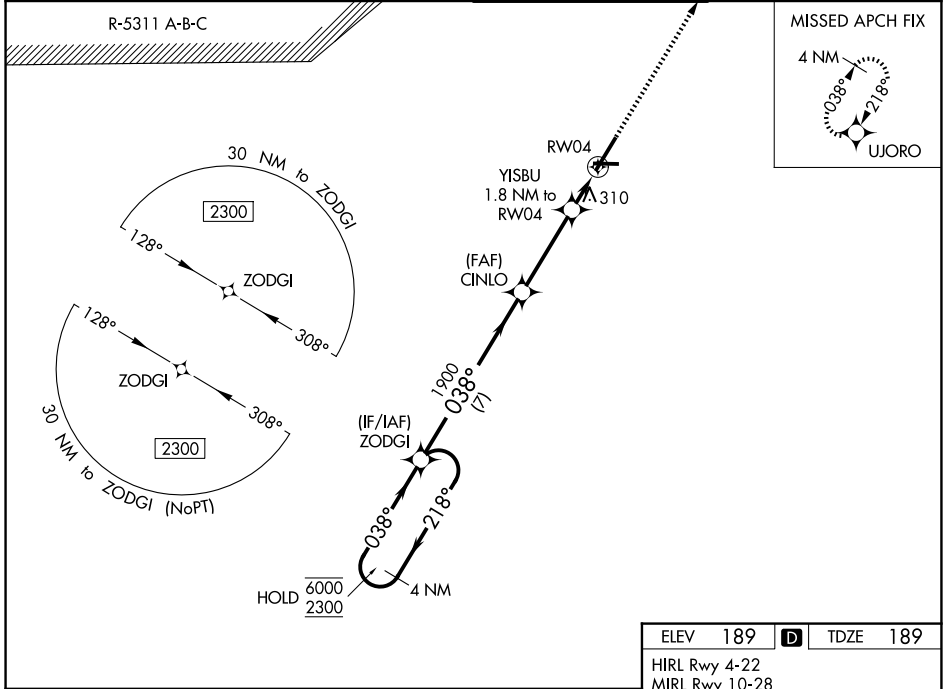
WAAS CH 50111 W04A	APP CRS 038°	Rwy Ldg TDZE Apt Elev	6408 189 189
--	------------------------	-----------------------------	---

RNAV (GPS) RWY 4

FAYETTEVILLE RGNL/GRANNIS FLD (FAY)

RNP APCH.	MALS R	MISSED APPROACH: Climb to 2300 direct UJORO and hold.
For uncompensated Baro-VNAV systems, LNAV/VNAV NA below -10° C or above 54°C. # RVR 1800 authorized with use of FD or AP or HUD to DA.		

ATIS 121.25	FAYETTEVILLE APP CON 133.0 290.25	FAYETTEVILLE TOWER 118.3 269.2	GND CON 121.7 348.6
-----------------------	---	--	-------------------------------



CATEGORY	A	B	C	D
LPV DA #	389/24 200 (200-½)			
LNAV/VNAV DA	588/35 399 (400-⅙)			
LNAV MDA	560/24 371 (400-½)			
CIRCLING	640-1 451 (500-1)	660-1 471 (500-1)	860-2 671 (700-2)	860-2¼ 671 (700-2¼)

SE-2, 14 MAY 2026 to 11 JUN 2026

SE-2, 14 MAY 2026 to 11 JUN 2026