

ILS or LOC RWY 28

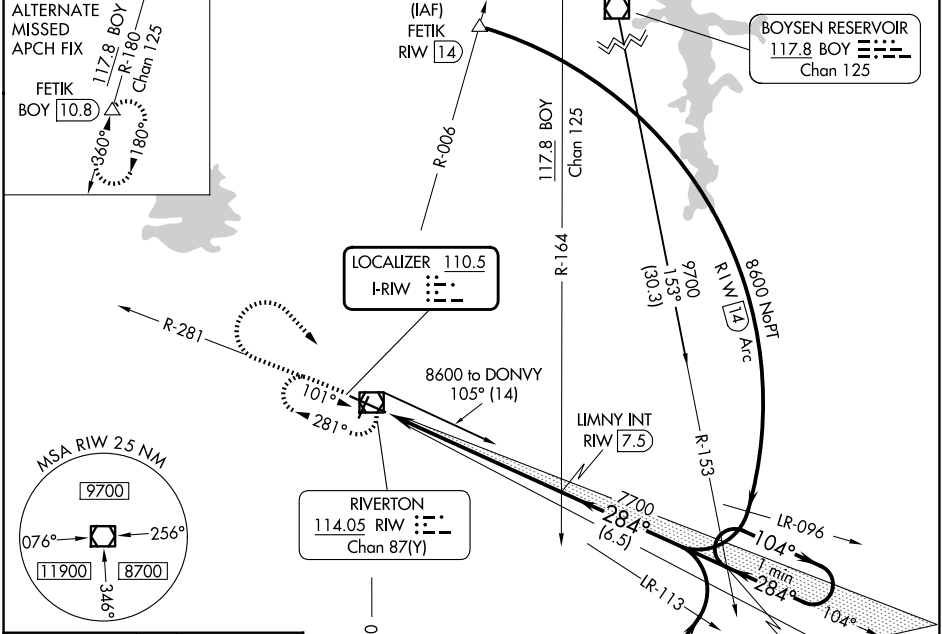
CENTRAL WYOMING RGNL (RIW)

LOC I-RW 110.5	APP CRS 284°	Rwy Ldg TDZE Apt Elev	8204 5459 5516
--------------------------	------------------------	-----------------------------	---

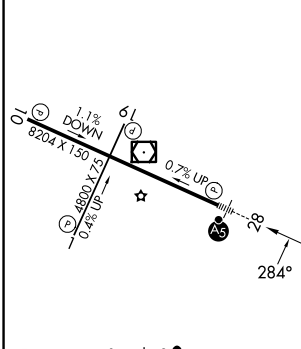
NA When local altimeter setting not received, use Lander altimeter setting: increase DA to 5713 feet; increase all MDA 60 feet and S-LOC 28 Cat C and D visibility ¼ mile. For inop MALSRL, when using Lander altimeter setting, increase S-ILS 28 all Cats visibility to ¾ mile and S-LOC 28 Cat C and D visibility to 1 ½ mile. VDP NA when using Lander altimeter setting.

MALSRL MISSED APPROACH: Climb to 6800 then climbing right turn to 7700 direct RIW VOR/DME and hold, continue climb-in-hold to 7700.

ASOS 121.425	SALT LAKE CENTER 133.25 285.6	UNICOM 122.8 (CTAF)
------------------------	---	-------------------------------



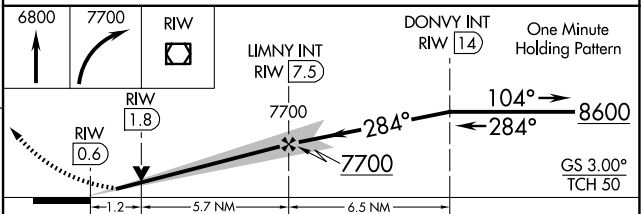
ELEV 5516	D	TDZE 5459
-----------	----------	-----------



REIL Rwy 1, 10 and 19
MIRL Rwy 1-19
HIRL Rwy 10-28

FAF to MAP 6.9 NM

Knots	60	90	120	150	180
Min:Sec	6:54	4:36	3:27	2:46	2:18



CATEGORY	A	B	C	D
S-ILS 28	5659-½ 200 (200-½)			
S-LOC 28	5880-½ 421 (400-½)		5880-¾ 421 (400-¾)	
CIRCLING	6000-1 484 (500-1)		6000-1½ 6120-2 484 (500-1½) 604 (700-2)	

NW-1, 14 MAY 2026 to 11 JUN 2026

NW-1, 14 MAY 2026 to 11 JUN 2026