

VOR/DME RIW <b>114.05</b> Chan 87(Y)	APP CRS <b>293°</b>	Rwy Ldg TDZE Apt Elev	<b>8204</b> <b>5459</b> <b>5516</b>
--------------------------------------------	------------------------	-----------------------------	-------------------------------------------

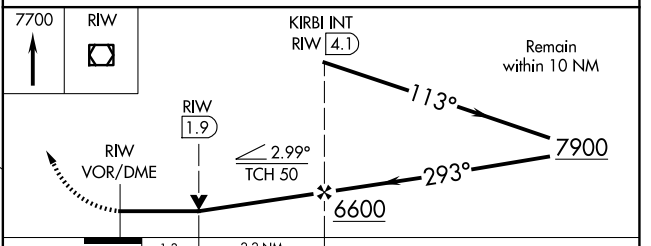
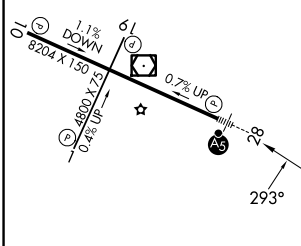
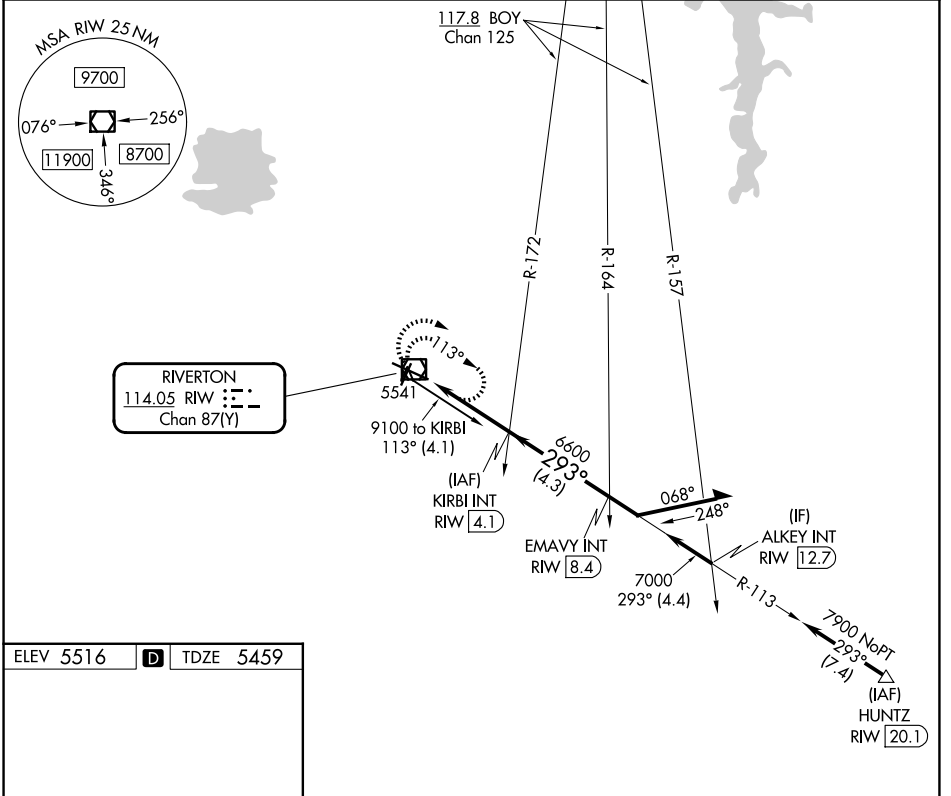
# VOR RWY 28

CENTRAL WYOMING RGNL (RIW)

**⚠** When local altimeter setting not received, use Lander altimeter setting and increase all MDA 60 feet. VDP NA when using Lander altimeter setting. For inop MALSR, increase S-28 Cat C and D visibility to 1½ miles.

**MALSR** MISSED APPROACH: Climb to 7700 in RIW VOR/DME holding pattern.

ASOS <b>121.425</b>	SALT LAKE CENTER <b>133.25 285.6</b>	UNICOM <b>122.8 (CTAF)</b>
------------------------	-----------------------------------------	-------------------------------



CATEGORY	A	B	C	D
S-28	5920-½ 461 (500-½)		5920-1 461 (500-1)	
CIRCLING	6000-1 484 (500-1)		6000-1½ 484 (500-1½)	6120-2 604 (700-2)

REIL Rwy 1, 10 and 19

MIRL Rwy 1-19

HIRL Rwy 10-28

NW-1, 14 MAY 2026 to 11 JUN 2026

NW-1, 14 MAY 2026 to 11 JUN 2026