

LOC/DME I-SJC <b>110.9</b> Chan 46	APP CRS <b>306°</b>	Rwy Ldg <b>7614</b> TDZE <b>57</b> Apt Elev <b>62</b>
--	------------------------	---

# ILS RWY 30L (SA CAT I & II)

NORMAN Y MINETA SAN JOSE INTL (SJC)

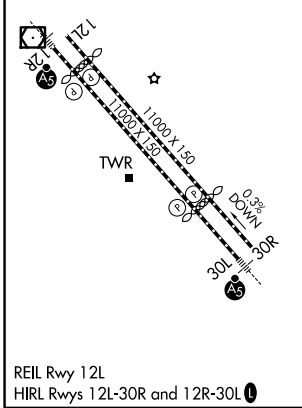
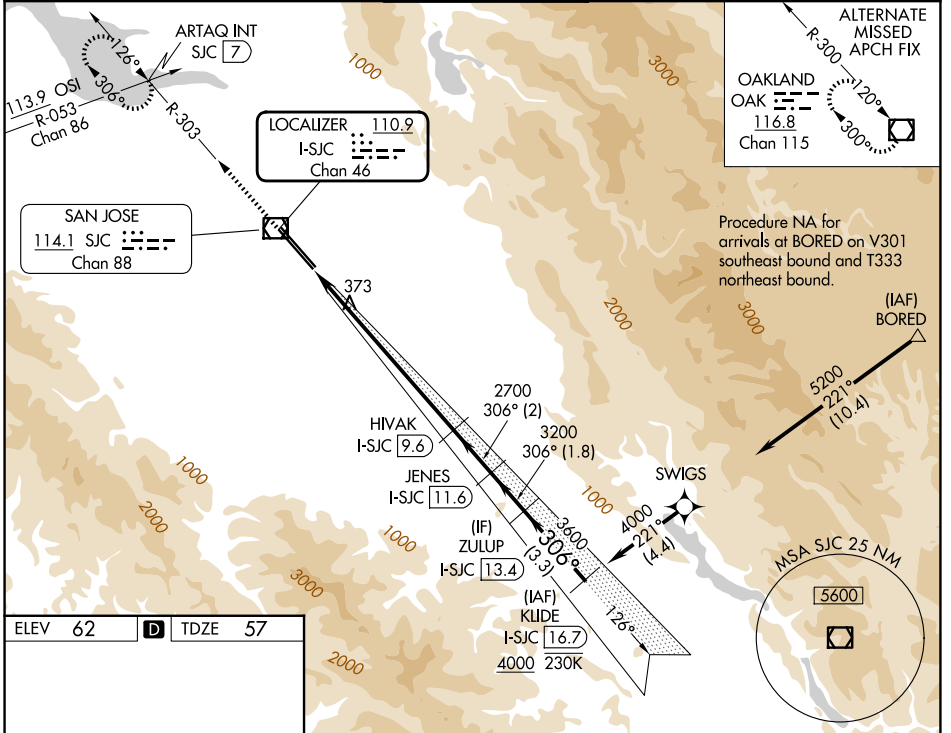
RNAV 1-GPS or RADAR required for procedure entry. DME required.  
From BORED: RNAV 1-GPS required.

MALSR

MISSED APPROACH: Climb to 1900 on SJC VOR/DME R-303 to ARTAQ INT/SJC 7 DME and hold.

SA CAT I: Requires specific OPSPEC, MSPEC, or LOA approval and use of HUD to DH.  
SA CAT II: Reduced lighting: requires specific OPSPEC, MSPEC, or LOA approval and use of autoland or HUD to touchdown. SA CAT I/II: Procedure NA when tower closed.

D-ATIS <b>126.95</b>	NORCAL APP CON <b>120.1 290.25</b>	SAN JOSE TOWER ★ <b>124.0 (CTAF) 257.6</b>	GND CON <b>121.7</b>	UNICOM <b>122.95</b>
-------------------------	---------------------------------------	---	-------------------------	-------------------------



1900 ↑ ARTAQ INT SJC R-303	VGSI and ILS glidepath not coincident (VGSI Angle 3.00/TCH 70).	ZULUP I-SJC [13.4]	KLIDE I-SJC [16.7]
HIVAK I-SJC [9.6]	JENES I-SJC [11.6]	4000	
2700	3200	3600	4000
8.1 NM	2 NM	1.8 NM	3.3 NM

CATEGORY	A	B	C	D
S-ILS 30L	SA CAT I	RA 147/14	150 DA	207
S-ILS 30L	SA CAT II	RA 97/12	100 DA	157

**SA CATEGORY I & II ILS - SPECIAL AIRCREW & AIRCRAFT CERTIFICATION REQUIRED**

SW-2, 14 MAY 2026 to 11 JUN 2026

SW-2, 14 MAY 2026 to 11 JUN 2026