

LOC/DME I-SLV 110.9 Chan 46	APP CRS 126°	Rwy Ldg TDZE Apt Elev	12R 8587 46 62	12L 8831 44 62
---	------------------------	-----------------------------	--	--

ILS or LOC RWY 12R

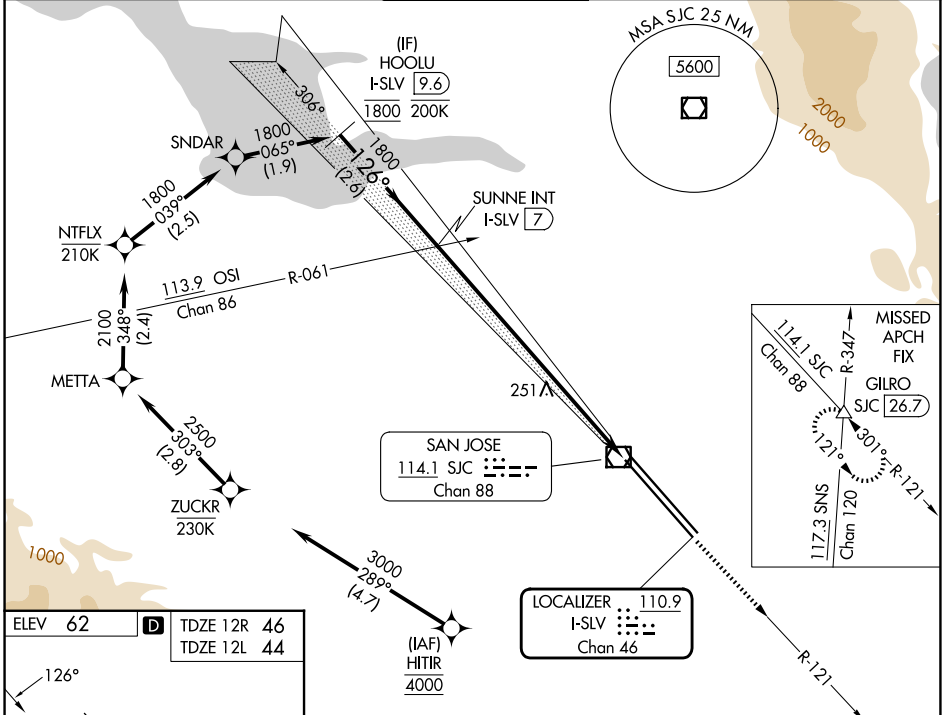
NORMAN Y MINETA SAN JOSE INTL (SJC)

RNP APCH - GPS. From HITIR.
DME required.

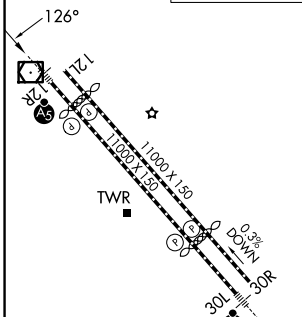
MALSR
Rwy 12R

MISSED APPROACH: Climb to 500 then climb to 4000 on SJC VOR/DME R-121 to GILRO INT/SJC 26.7 DME and hold.

D-ATIS 126.95	NORCAL APP CON 120.1 290.25	SAN JOSE TOWER ★ 124.0 (CTAF) 257.6	GND CON 121.7	UNICOM 122.95
-------------------------	---------------------------------------	---	-------------------------	-------------------------

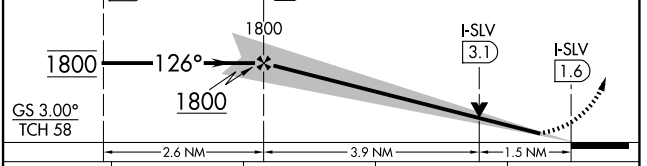


ELEV 62	D	TDZE 12R 46	TDZE 12L 44
---------	----------	-------------	-------------



VGSI and ILS glidepath not coincident (VGSI Angle 3.00/TCH 75).

500	4000	GILRO
↑	↑	△
SJC R-121	SJC R-121	



CATEGORY	A	B	C	D
S-ILS 12R	251/24 205 (200-½)			
S-LOC 12R	580/24	534 (600-½)	580/55	534 (600-1)
SIDESTEP 12L	600-1	556 (600-1)	600-1½ 556 (600-1½)	600-2 556 (600-2)

SW-2, 14 MAY 2026 to 11 JUN 2026

SW-2, 14 MAY 2026 to 11 JUN 2026