

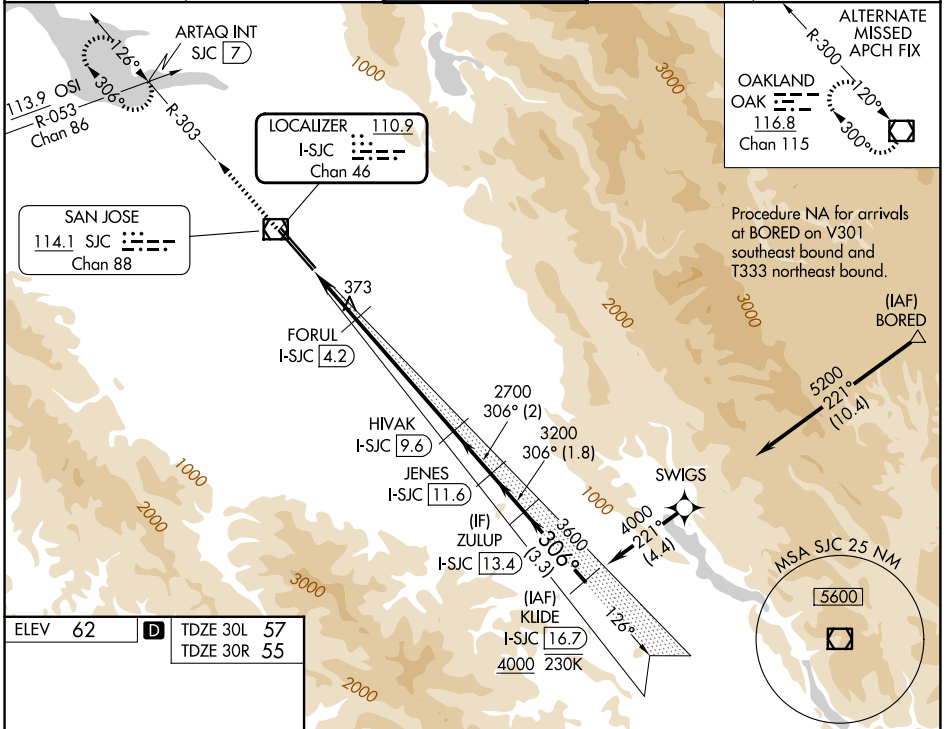
LOC/DME I-SJC 110.9 Chan 46	APP CRS 306°	Rwy Ldg 7614	30R 7597
		TDZE 57	55
		Apt Elev 62	62

ILS or LOC RWY 30L

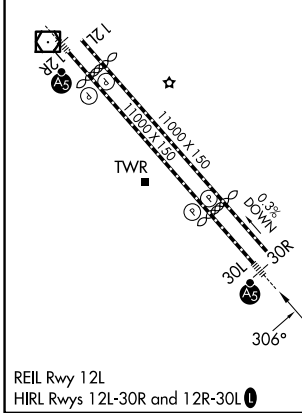
NORMAN Y MINETA SAN JOSE INTL (SJC)

RNAV 1-GPS or RADAR required for procedure entry. DME required. From BORED: RNAV 1-GPS required.	MALSR Rwy 30L 	MISSED APPROACH: Climb to 1900 on SJC VOR/DME R-303 to ARTAQ INT/SJC 7 DME and hold.
 # RVR 1800 authorized with use of FD or AP or HUD to DA.		

D-ATIS 126.95	NORCAL APP CON 120.1 290.25	SAN JOSE TOWER ★ 124.0 (CTAF) 257.6	GND CON 121.7	UNICOM 122.95
-------------------------	---------------------------------------	---	-------------------------	-------------------------



ELEV 62	D	TDZE 30L 57	TDZE 30R 55
---------	----------	-------------	-------------



1900	ARTAQ INT	VGSJ and ILS glidepath not coincident (VGSJ Angle 3.00/TCH 70).		ZULUP I-SJC 13.4	KLIDE I-SJC 16.7
SJC R-303	FORUL I-SJC 4.2	HIAK I-SJC 9.6	JENES I-SJC 11.6	4000	4000
*LOC only	*I-SJC 3	2700	3200	3600	4000
I-SJC 1.4	I-SJC 4.2	I-SJC 9.6	I-SJC 11.6	I-SJC 13.4	I-SJC 16.7
1.6 NM	1.2 NM	5.3 NM	2 NM	1.8 NM	3.3 NM

CATEGORY	A	B	C	D
S-ILS 30L#	257/24 200 (200-1/2)			
S-LOC 30L	640/24	583 (600-1/2)	640-1 3/4	583 (600-1 1/4)
SIDESTEP 30R	640-1	585 (600-1)	640-1 3/4	585 (600-2)

SW-2, 14 MAY 2026 to 11 JUN 2026

SW-2, 14 MAY 2026 to 11 JUN 2026