

APP CRS	Rwy Ldg	8831
126°	TDZE	44
	Apt Elev	62

RNAV (RNP) Z RWY 12L

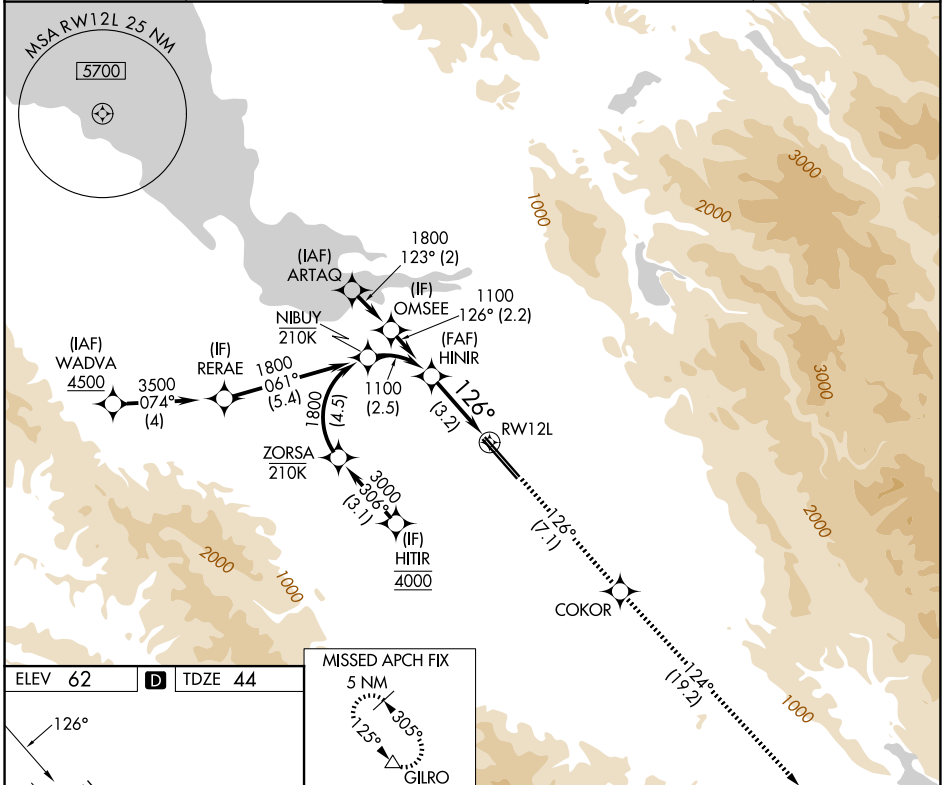
NORMAN Y MINETA SAN JOSE INTL (SJC)

RNP AR APCH-GPS.

▼ For uncompensated Baro-VNAV systems, procedure NA below 0°C or above 54°C.

MISSED APPROACH: Climb to 4600 on track 126° to COKOR and track 124° to GILRO and hold.

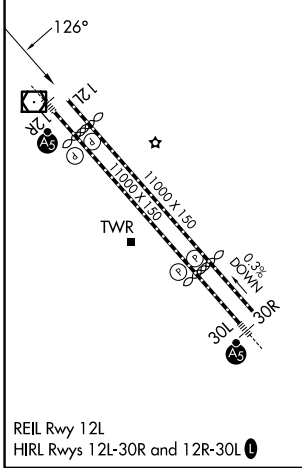
D-ATIS 126.95	NORCAL APP CON 120.1 290.25	SAN JOSE TOWER * 124.0 (CTAF) 257.6	GND CON 121.7	UNICOM 122.95
-------------------------	---------------------------------------	---	-------------------------	-------------------------



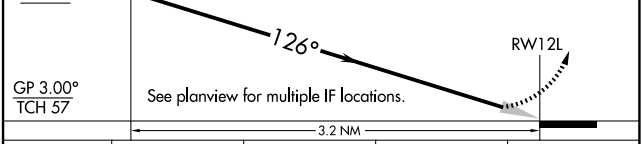
SW-2, 14 MAY 2026 to 11 JUN 2026

SW-2, 14 MAY 2026 to 11 JUN 2026

ELEV 62	D	TDZE 44
---------	----------	---------



HINIR 1100	VGSI and RNAV glidepath not coincident (VGSI Angle 3.00/TCH 70).	4600 ↑ tr 126°	COKOR ✧ tr 124°	GILRO △
---------------	--	----------------------	-----------------------	------------



CATEGORY	A	B	C	D
RNP 0.18 DA		400-1	356 (400-1)	
RNP 0.30 DA		451-1 1/8	407 (400-1 1/8)	

AUTHORIZATION REQUIRED