

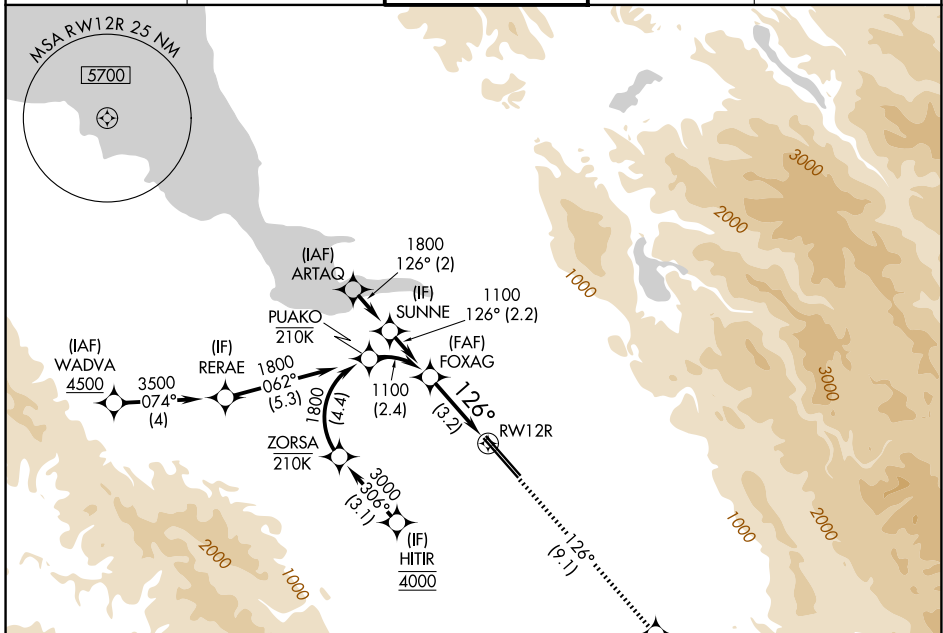
APP CRS	Rwy Ldg	<b>8587</b>
<b>126°</b>	TDZE	<b>46</b>
	Apt Elev	<b>62</b>

# RNAV (RNP) Z RWY 12R

NORMAN Y MINETA SAN JOSE INTL (SJC)

RNP AR APCH-GPS.	MALSRL	MISSED APPROACH: Climb to 4600 on track 126° to HOSBO and track 124° to GILRO and hold.
▼ For uncompensated Baro-VNAV systems, procedure NA below 0°C or above 54°C. For inop ALS, increase RNP 0.15 all Cats visibility to RVR 5500.		

D-ATIS <b>126.95</b>	NORCAL APP CON <b>120.1 290.25</b>	SAN JOSE TOWER * <b>124.0 (CTAF) 0 257.6</b>	GND CON <b>121.7</b>	UNICOM <b>122.95</b>
-------------------------	---------------------------------------	---	-------------------------	-------------------------



SW-2, 14 MAY 2026 to 11 JUN 2026

SW-2, 14 MAY 2026 to 11 JUN 2026

ELEV 62	<b>D</b>	TDZE 46
---------	----------	---------

REIL Rwy 12L  
HIRL Rwys 12L-30R and 12R-30L

MISSED APCH FIX  
5 NM  
GILRO

FOXAG 1100	VGSI and RNAV glidepath not coincident (VGSI Angle 3.00/TCH 75).	4600 ↑ tr 126°	HOSBO ✧ tr 124°	GILRO △
---------------	--	----------------------	-----------------------	------------

GP 3.00°  
TCH 58

See planview for multiple IF locations.

CATEGORY	A	B	C	D
RNP 0.15 DA		394/30	348 (400- <sup>3</sup> / <sub>4</sub> )	
RNP 0.30 DA		486/40	440 (500- <sup>3</sup> / <sub>4</sub> )	

AUTHORIZATION REQUIRED