

WAAS CH 72901 W30B	APP CRS 306°	Rwy Ldg 7597 TDZE 55 Apt Elev 62
--	------------------------	---

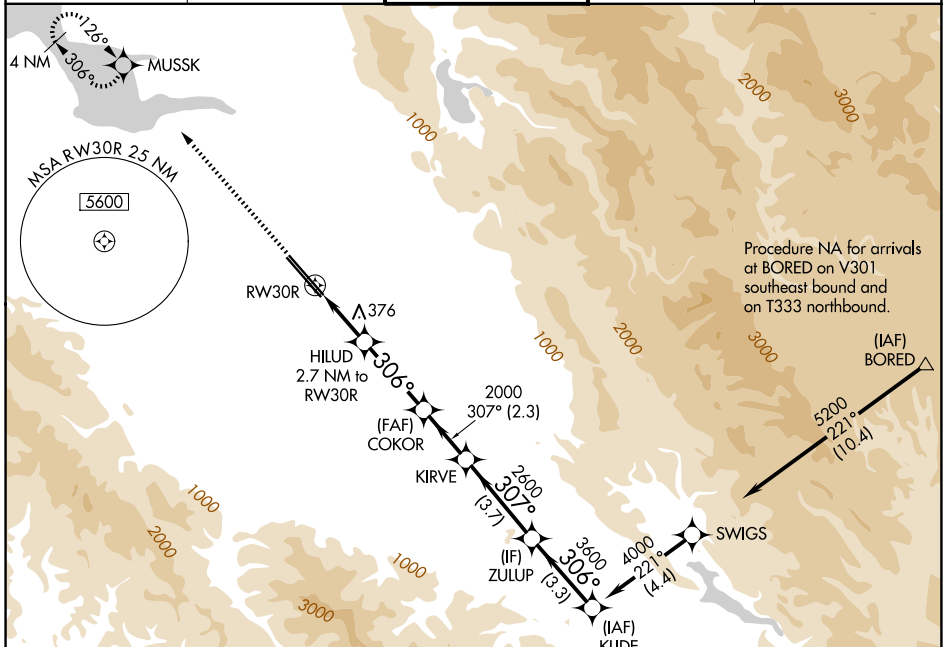
RNAV (GPS) Y RWY 30R

NORMAN Y MINETA SAN JOSE INTL (SJC)

RNP APCH-GPS.
 For uncompensated Baro-VNAV systems, LNAV/VNAV NA below -1°C or above 54°C.

MISSED APPROACH: Climb to 2300 direct MUSK and hold.

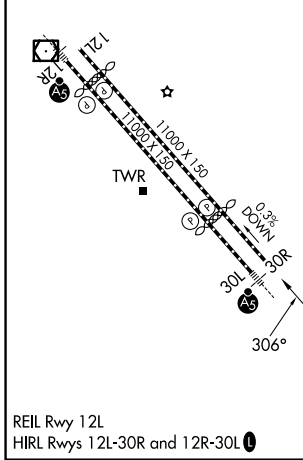
D-ATIS 126.95	NORCAL APP CON 120.1 290.25	SAN JOSE TOWER * 124.0 (CTAF) 0 257.6	GND CON 121.7	UNICOM 122.95
-------------------------	---------------------------------------	---	-------------------------	-------------------------



SW-2, 14 MAY 2026 to 11 JUN 2026

SW-2, 14 MAY 2026 to 11 JUN 2026

ELEV 62	D	TDZE 55
---------	----------	---------



2300	MUSK	VGSi and RNAV glidepath not coincident (VGSi Angle 3.00/TCH 69).				KLIDE
		HILUD 2.7 NM to RWY 30R	COKOR 2000	KIRVE 2600	ZULUP 3600	4000
		1.6 NM to RWY 30R				GP 3.00° TCH 55
		1.6 NM	1.1 NM	3.2 NM	2.3 NM	3.7 NM
		1.6 NM	1.1 NM	3.2 NM	2.3 NM	3.7 NM

	CATEGORY	A	B	C	D
LPV	DA		255-3/4	200 (200-3/4)	
LNAV/VNAV	DA		541-13/8	486 (500-13/8)	
LNAV	MDA	640-1	585 (600-1)	640-13/4	585 (600-13/4)
CIRCLING		640-1 578 (600-1)	700-1 638 (700-1)	700-13/4 638 (700-13/4)	700-2 638 (700-2)