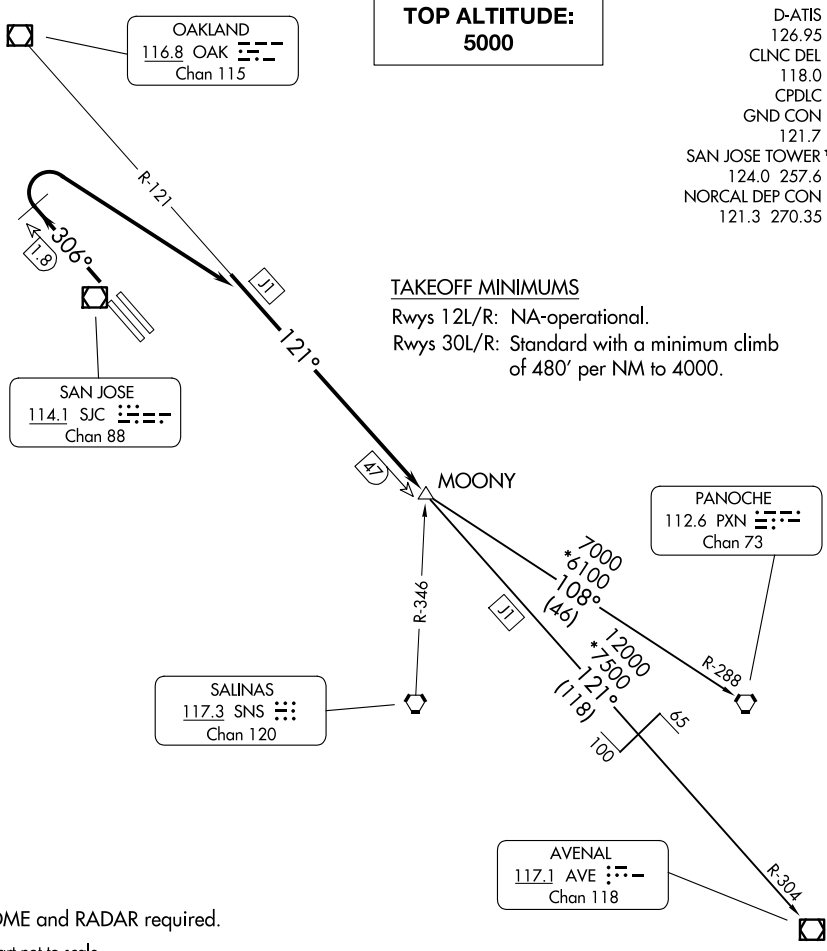


(SJC3.MOONY) 23334

SAN JOSE THREE DEPARTURE

AL-693 (FAA)

NORMAN Y MINETA SAN JOSE INTL (SJC)
SAN JOSE, CALIFORNIA



NOTE: DME and RADAR required.
NOTE: Chart not to scale.

DEPARTURE ROUTE DESCRIPTION

TAKEOFF RUNWAYS 30L/R: Climb heading 306° to SJC 1.8 DME NW of SJC VOR/DME, then turn right to intercept and proceed on OAK R-121 to MOONY INT, thence. . . .
 . . . on (transition) or (assigned route). Maintain 5000, expect clearance to filed altitude ten minutes after departure.

AVENAL TRANSITION (SJC3.AVE): From over MOONY INT on OAK R-121 and AVE R-304 to AVE VOR/DME.

PANOCHÉ TRANSITION (SJC3.PXN): From over MOONY INT on PXN R-288 to PXN VORTAC.

SW-2, 14 MAY 2026 to 11 JUN 2026

SW-2, 14 MAY 2026 to 11 JUN 2026

SAN JOSE THREE DEPARTURE
(SJC3.MOONY) 15AUG19

SAN JOSE, CALIFORNIA
NORMAN Y MINETA SAN JOSE INTL (SJC)