

VOR/DME M <sup>VY</sup>	APP CRS	Rwy Ldg	5504
114.5	050°	TDZE	58
Chan 92		Apt Elev	67

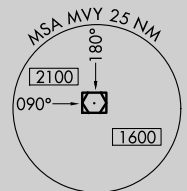
# VOR RWY 6

MARTHA'S VINEYARD (M<sup>VY</sup>)

▼ DME required. Rwy 6 helicopter visibility reduction below 3/4 SM NA.  
 VDP NA with Hyannis altimeter setting. When local altimeter setting not received, use Hyannis altimeter setting and increase all MDA 60 feet;  
 ▲ increase S-6 Cats C and D visibility 1/4 mile. Night landing: Rwy 15 NA.

MISSED APPROACH: Climb to 500 then climbing right turn to 2500 via MVY VOR/DME R-180 to CLAMY INT/ACK 23.9 DME and hold.

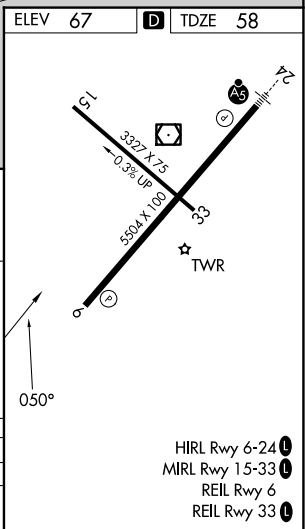
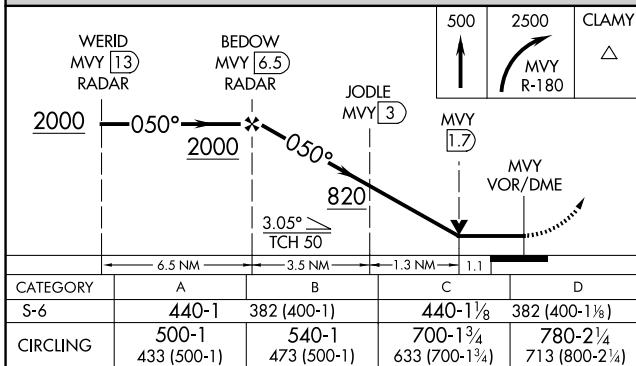
ATIS <b>126.25</b>	BOSTON APP CON <b>133.75</b>	VINEYARD TOWER ★ <b>121.4 (CTAF) 0</b>	GND CON <b>124.35</b>	UNICOM <b>122.95</b>
-----------------------	---------------------------------	---	--------------------------	-------------------------



NE-1, 14 MAY 2026 to 11 JUN 2026

NE-1, 14 MAY 2026 to 11 JUN 2026

## RADAR REQUIRED



HIRL Rwy 6-24 0  
 MIRL Rwy 15-33 0  
 REIL Rwy 6  
 REIL Rwy 33 0