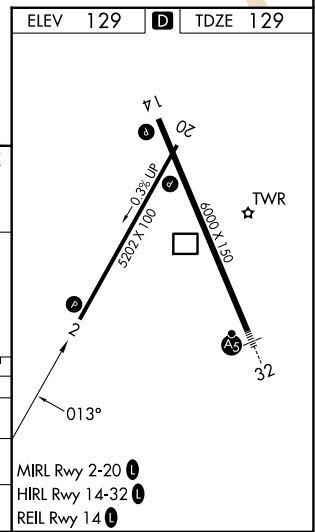
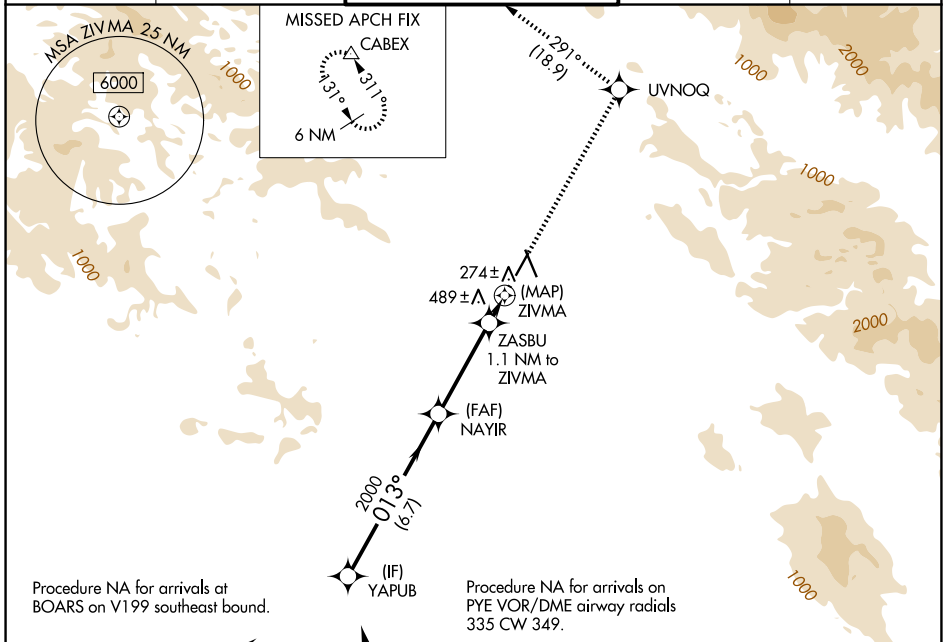


WAAS CH 69230 W02A	APP CRS 013°	Rwy Ldg TDZE 129 Apt Elev 129	4802
--	------------------------	---	-------------

RNAV (GPS) RWY 2

CHARLES M SCHULZ/SONOMA COUNTY (STS)

RNP APCH.		MISSED APPROACH: Climb to 6000 direct UVNOQ and on track 291° to CABEX and hold, continue climb-in-hold to 6000.		
▼ ▲ Rwy 2 helicopter visibility reduction below ¾ SM NA.				
ATIS 120.55	OAKLAND CENTER 127.8 353.5	SANTA ROSA TOWER★ 118.5 (CTAF) 0 363.0	GND CON 121.9	UNICOM 122.95



YAPUB	NAYIR	ZASBU 1.1 NM to ZIVMA	ZIVMA	UVNOQ	CABEX
3000	2000	800		6000	
6.7 NM	3.7 NM	1.1 NM	0.9 NM		
013°	3.00° TCH 45			291°	
CATEGORY	A	B	C	D	
LP MDA	500-1 371 (400-1)				
LNAV MDA	660-1	531 (600-1)	660-1½	531 (600-1½)	
CIRCLING	660-1 531 (600-1)	680-1 551 (600-1)	1080-3 951 (1000-3)	1420-3 1291 (1300-3)	

SW-2, 14 MAY 2026 to 11 JUN 2026

SW-2, 14 MAY 2026 to 11 JUN 2026