

WAAS CH 90201 W22A	APP CRS 226°	Rwy Ldg TDZE Apt Elev	7004 980 980
--	------------------------	-----------------------------	---

RNAV (GPS) RWY 22

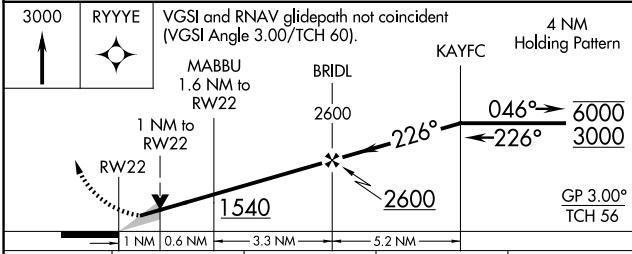
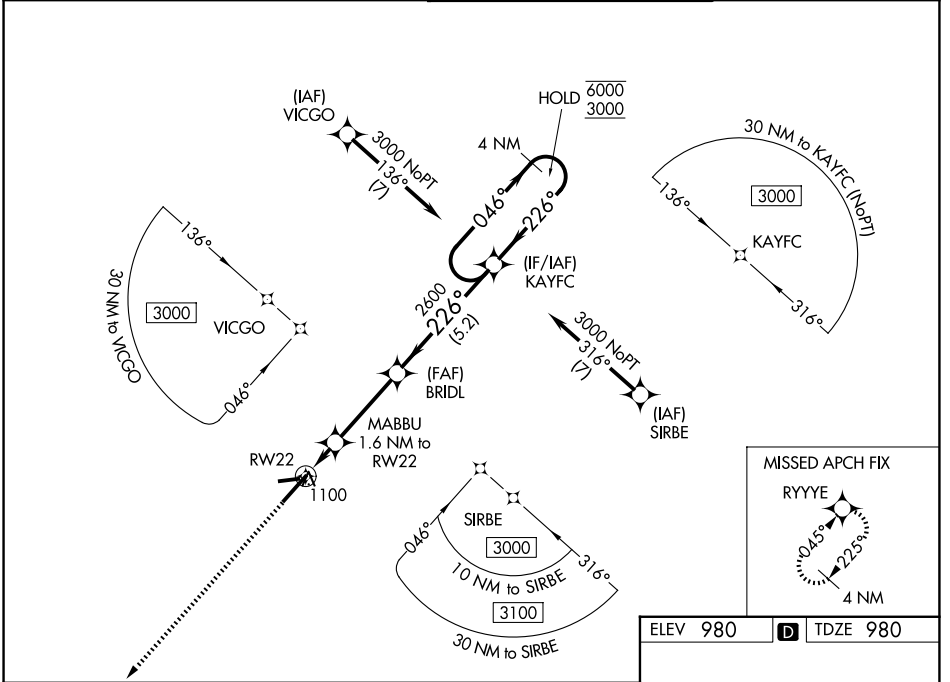
BLUE GRASS (LEX)

RNP APCH - GPS.

▲ For uncompensated Baro-VNAV systems, LNAV/VNAV NA below -13°C or above 54°C.

MISSED APPROACH: Climb to 3000 direct RYYYE and hold.

ATIS 126.3	LEXINGTON APP CON 120.15 259.3 (040°-220°) 120.75 298.9 (221°-039°)	LEXINGTON TOWER 119.1 257.8	GND CON 121.9
----------------------	---	---------------------------------------	-------------------------



ELEV 980 **D** TDZE 980

TDZL/RCLS Rwy 4
REIL Rws 9, 22 and 27
HIRL Rwy 4-22
MIRL Rwy 9-27

CATEGORY	A	B	C	D
LPV DA		1180-3/4	200 (200-3/4)	
LNAV/VNAV DA		1261-7/8	281 (300-7/8)	
LNAV MDA		1360-1	380 (400-1)	
CIRCLING	1420-1 440 (500-1)	1440-1 460 (500-1)	1520-1 1/2 540 (600-1 1/2)	1600-2 620 (700-2)

SE-1, 14 MAY 2026 to 11 JUN 2026

SE-1, 14 MAY 2026 to 11 JUN 2026