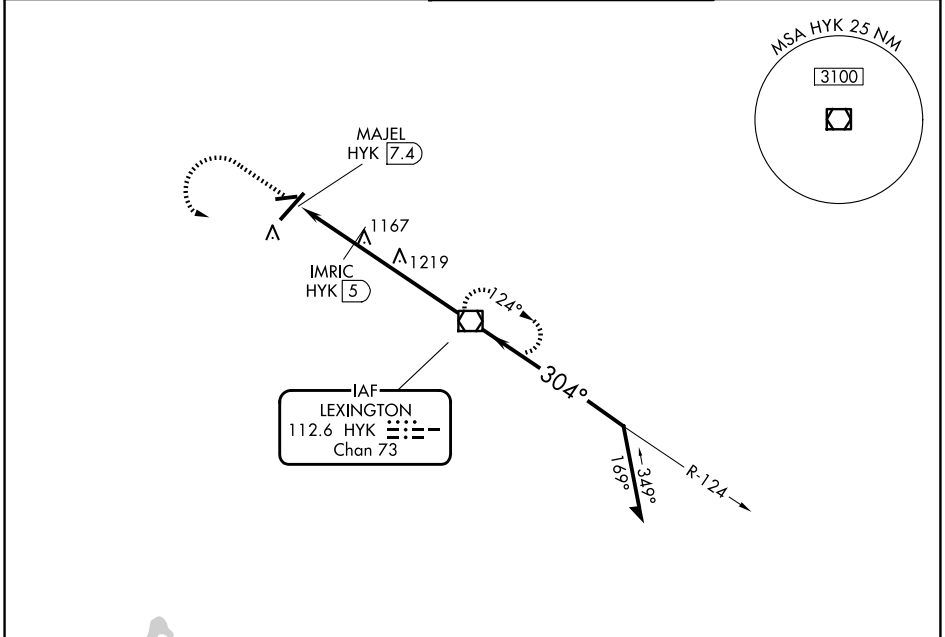


VOR/DME HYK 112.6 Chan 73	APP CRS 304°	Rwy Ldg TDZE Apt Elev N/A N/A 979
---	------------------------	--

VOR-A
BLUE GRASS (LEX)

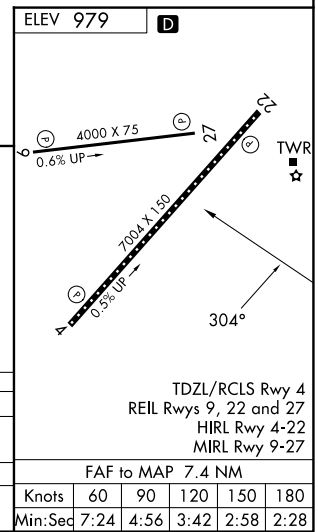
▼ When local altimeter setting not received, use Frankfort altimeter setting and increase all MDAs 80 feet and visibility Cats C and D ¼ SM.
▲ MISSED APPROACH: Climb to 3100 then left turn direct HYK VOR/DME and hold.

ATIS 126.3	LEXINGTON APP CON 120.15 259.3 (040°-220°) 120.75 298.9 (221°-039°)	LEXINGTON TOWER 119.1 257.8	GND CON 121.9
----------------------	---	---------------------------------------	-------------------------



SE-1, 14 MAY 2026 to 11 JUN 2026

SE-1, 14 MAY 2026 to 11 JUN 2026



3100	HYK	HYK VOR/DME	Remain within 10 NM
1540*	MAJEL HYK (7.4)	IMRIC HYK (5)	3100
1540-1	561 (600-1)	1540-1½	1600-2
IMRIC DME FIX MINIMUMS		1520-1½	1600-2
1460-1	481 (500-1)	541 (600-1½)	621 (700-2)

CATEGORY	A	B	C	D
CIRCLING	1540-1	561 (600-1)	1540-1½	1600-2
			561 (600-1½)	621 (700-2)
CIRCLING	1460-1	481 (500-1)	1520-1½	1600-2
			541 (600-1½)	621 (700-2)

ELEV 979				
D				
4000 X 75				
0.6% UP				
7500 X 150				
0.5% UP				
304°				
TWR				
TDZL/RCLS Rwy 4				
REIL Rwys 9, 22 and 27				
HIRL Rwy 4-22				
MIRL Rwy 9-27				
FAF to MAP 7.4 NM				
Knots	60	90	120	150
Min:Seq	7:24	4:56	3:42	2:58
			2:28	