

# ILS or LOC Z RWY 18

LOC I-EGI <b>111.7</b>	APCH CRS <b>184°</b>	Rwy ldg TDZE Arprt Elev <b>8025</b> <b>195</b> <b>195</b>
---------------------------	-------------------------	--

[USAF]

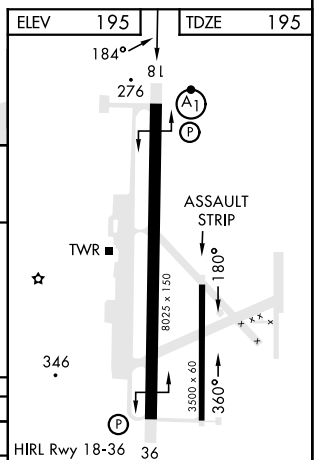
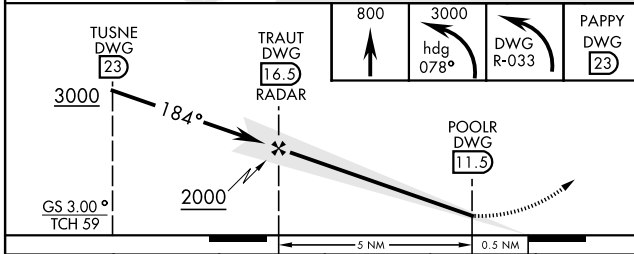
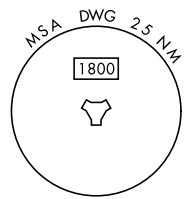
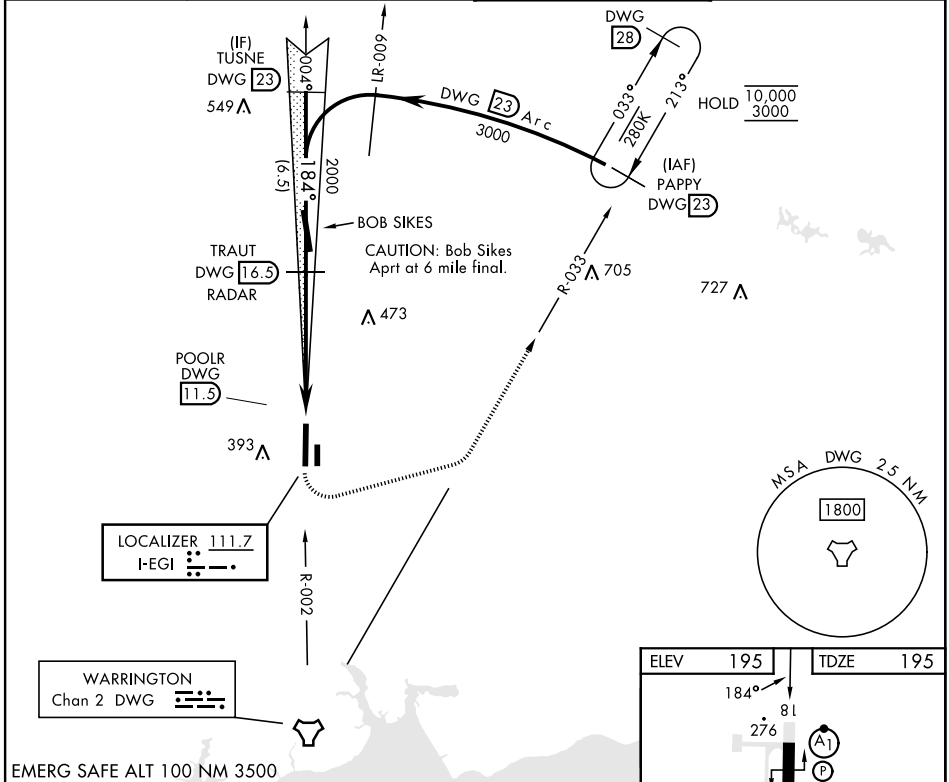
DUKE FLD (EGLIN AF AUX NR 3) (KEGI)

\* When ALS inop, increase RVR to 40, vis to ¼ mile.  
 \*\* When ALS inop, increase RVR to 55, vis to 1 mile.



MISSED APPROACH: Climb to 800, then climbing left turn to 3000 on heading 078° and DWG TACAN R-033 to PAPPY/23 DME and hold.

ATIS ★ <b>244.575</b>	EGLIN APP CON <b>125.1 281.45</b> (271° - 089°) <b>132.1 360.6</b> (090° - 270°)	TOWER ★ <b>133.2 290.425</b>	GND CON <b>123.25 251.125</b>
--------------------------	--	---------------------------------	----------------------------------



CATEGORY	A	B	C	D	E
S-ILS 18 *	395/24		200	(200-½)	
S-LOC 18 **	540/24	345 (400-½)	540/30	345	(400-¾)
CIRCLING	680-1 485 (600-1)	740-1 545 (600-1)	740-1½ 545 (600-1½)	760-2 565 (600-2)	820-2¼ 625 (700-2¼)

HIRL Rwy 18-36	36
FAF to MAP 5.0 NM	
Knots	60 90 120 150 180
Min:Sec	5:00 3:20 2:30 2:00 1:40

# ILS or LOC Z RWY 18

SE-3, 14 MAY 2026 to 11 JUN 2026

SE-3, 14 MAY 2026 to 11 JUN 2026