

# TACAN Z RWY 18

TACAN DWG Chan <b>2</b>	APCH CRS <b>183°</b>	Rwy ldg TDZE Arprt Elev <b>8025</b> <b>195</b> <b>195</b>
----------------------------	-------------------------	--

[USAF]

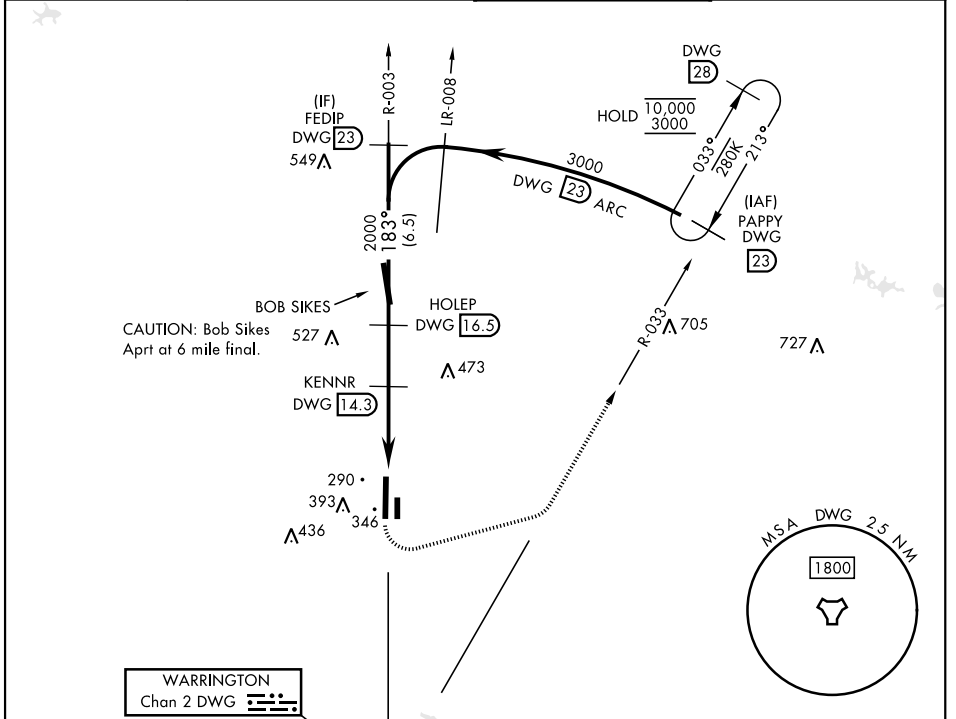
DUKE FLD (EGLIN AF AUX NR 3) (KEGI)

\* When ALS inop, increase RVR to 55, vis to 1 mile.

ALSF-1 

MISSED APPROACH: Climb to 800, then climbing left turn to 3000 on heading 078° and DWG TACAN R-033 to PAPPY/23 DME and hold.

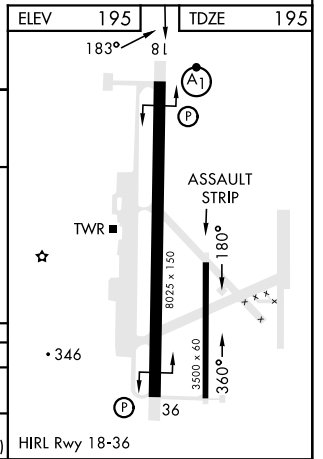
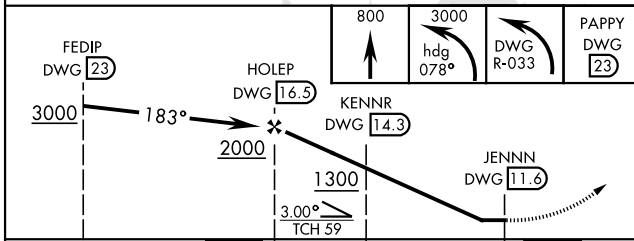
ATIS ★ <b>244.575</b>	EGLIN APP CON <b>125.1 281.45</b> (271°-089°) <b>132.1 360.6</b> (090°-270°)	TOWER ★ <b>133.2 290.425</b>	GND CON <b>123.25 251.125</b>
--------------------------	--	---------------------------------	----------------------------------



SE-3, 14 MAY 2026 to 11 JUN 2026

SE-3, 14 MAY 2026 to 11 JUN 2026

ELEV 195	TDZE 195
EMERG SAFE ALT 100 NM 3500	



CATEGORY	A	B	C	D	E
S-18*	560/24	365 (400-½)	560/35	365 (400-¾)	
CIRCLING	680-1 485 (500-1)	740-1 545 (600-1)	740-1½ 545 (600-1½)	760-2 565 (600-2)	820-2¼ 625 (700-2¼)

# TACAN Z RWY 18