

WAAS CH 56405 W25A	APP CRS 254°	Rwy Ldg TDZE 812 Apt Elev 813
--	------------------------	---

RNAV (GPS) RWY 25

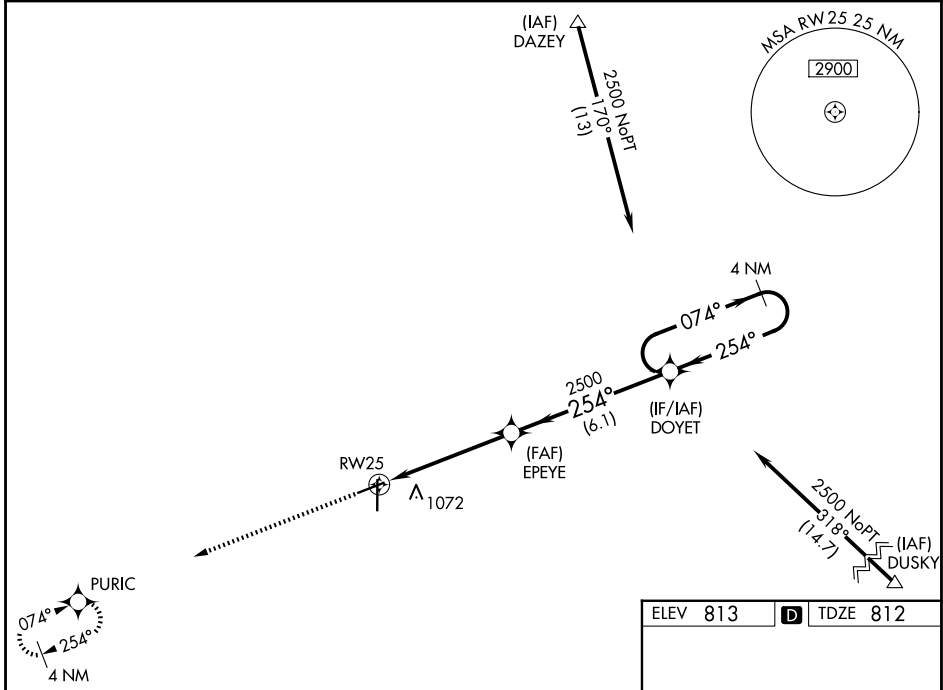
FINDLAY (F'DY)

RNP APCH-GPS.

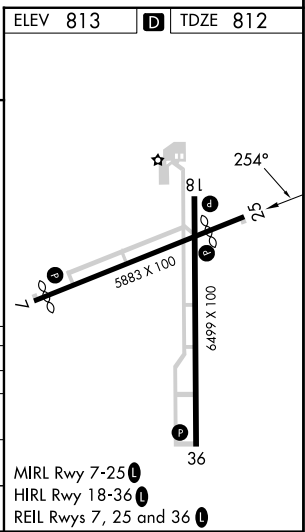
⚠ For uncompensated Baro-VNAV systems, LNAV/VNAV NA below -16°C or above 47°C. Baro-VNAV and VDP NA when using Lima Allen County altimeter setting. When local altimeter setting not received, use Lima Allen County altimeter setting: increase all DAs/MDAs 80 feet; increase LPV visibility 1/8 SM all Cats; increase LNAV Cat C/D and Circling Cat C/D visibility 1/4 SM. Circling Rwy 7 NA at night.

MISSED APPROACH: Climb to 2500 direct PURIC and hold.

ASOS 132.85	TOLEDO APP CON 120.8 317.55	UNICOM 122.725 (CTAF) 0
-----------------------	---------------------------------------	-----------------------------------



2500	PURIC	VGSI and RNAV glidepath not coincident (VGSI Angle 3.00/TCH 33).	4 NM Holding Pattern
*LNAV only			
		EPEYE 2500	DOYET 2500
		254° ←	→ 254°
		2500	2500
		GP 3.00°	TCH 45'
		1.4 NM	3.7 NM
		6.1 NM	
CATEGORY	A	B	C
LPV DA		1116-1	304 (400-1)
LNAV/VNAV DA		1411-2	599 (600-2)
LNAV MDA	1280-1	468 (500-1)	1280-1 1/2 468 (500-1 1/2)
CIRCLING	1440-1	627 (700-1)	1440-1 3/4 627 (700-1 3/4)



EC-2, 14 MAY 2026 to 11 JUN 2026

EC-2, 14 MAY 2026 to 11 JUN 2026