

WAAS CH 72705 W36A	APP CRS 005°	Rwy Ldg TDZE Apt Elev	6499 809 813
--	------------------------	-----------------------------	---

RNAV (GPS) RWY 36

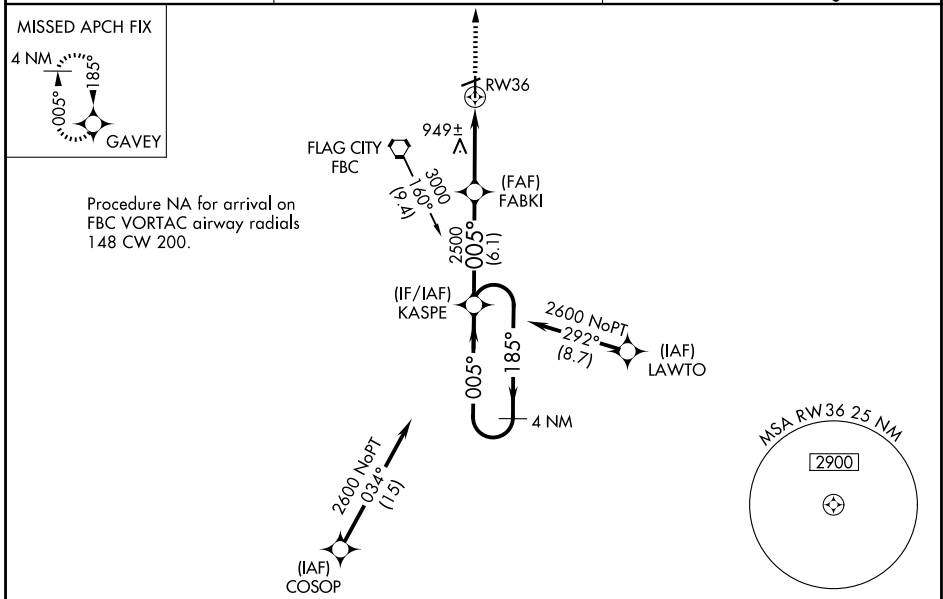
FINDLAY (F'DY)

RNP APCH - GPS.

▼ For uncompensated Baro-VNAV systems, LNAV/VNAV NA below -16°C or above 47°C.
▲ Baro-VNAV and VDP NA when using Lima Allen County altimeter setting.
 When local altimeter setting not received, use Lima Allen County altimeter setting; increase all DAs/MDAs 80 feet; increase LNAV Cat C/D visibility 1/8 SM and Circling Cat C/D visibility 1/4 SM.
 Circling Rwy 7 NA at night.

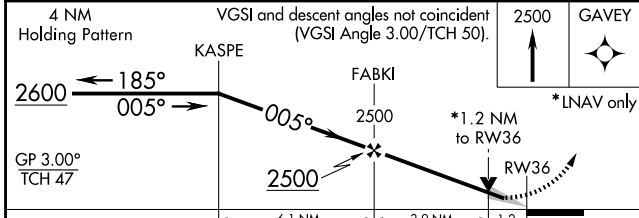
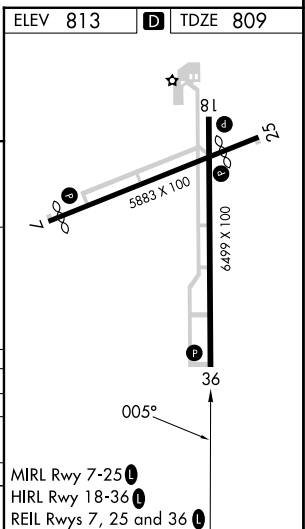
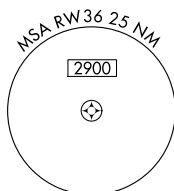
MISSED APPROACH:
 Climb to 2500 direct GAVEY and hold.

ASOS 132.85	TOLEDO APP CON 120.8 317.55	UNICOM 122.725 (CTAF)
-----------------------	---------------------------------------	---------------------------------



Procedure NA for arrival on FBC VORTAC airway radials 148 CW 200.

Procedure NA for arrival on ROD VORTAC airway radials 023 CW 088.



CATEGORY	A	B	C	D
LPV DA		1106-1	297 (300-1)	
LNAV/VNAV DA		1229-1½	420 (500-1½)	
LNAV MDA	1220-1	411 (500-1)	1220-1¼	411 (500-1¼)
CIRCLING	1440-1	627 (700-1)	1440-1¾	1540-2¼
			627 (700-1¾)	727 (800-2¼)

MIRL Rwy 7-25
 HIRL Rwy 18-36
 REL Rwys 7, 25 and 36

EC-2, 14 MAY 2026 to 11 JUN 2026

EC-2, 14 MAY 2026 to 11 JUN 2026