

REDSTONE ARSENAL, ALABAMA

RNAV (GPS) RWY 17

WAAS CH 45638 W17A	APCH CRS 173°	Rwy ldg TDZE Arprt Elev	7301 685 685
--------------------------	------------------	-------------------------------	--------------------

(USA)

REDSTONE AAF (KHUA)

RNP APCH - GPS	MALSR A5	MISSED APPROACH: Climb to 3000 direct FASOV and hold.
<p>▼ * When ALS inop, increase CAT ABCD vis to 1 1/4 miles; increase CAT E vis to 1 1/2 miles. ** When ALS inop, increase CAT CDE vis to 1 3/8 miles. *** Circling not authorized E of Rwy 17-35.</p>		

ATIS 120.65	HUNTSVILLE APP CON/DEP CON* 125.6 354.1	TOWER* 126.95 (CTAF) 0 290.275	PAR
----------------	--	-----------------------------------	-----

Visibility reduction by helicopters below 1 mile not authorized.

For uncompensated Baro-VNAV systems, LNAV/VNAV NA below -9°C (16°F) or above 54°C (130°F).

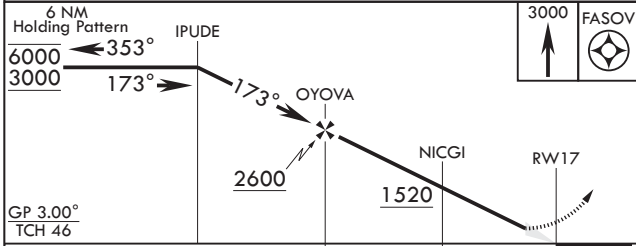
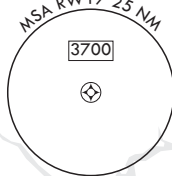
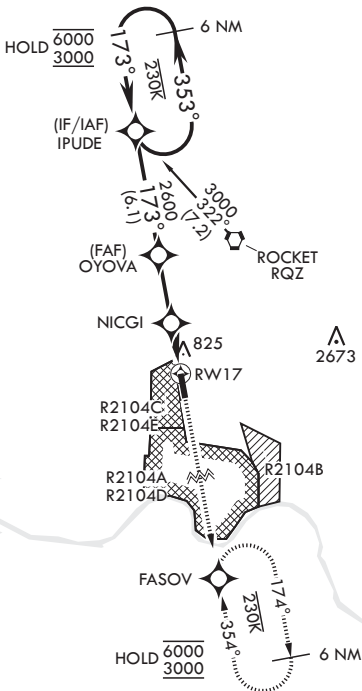
Inoperative table does not apply to LPV all CAT and LNAV CAT AB.



Procedure not authorized for arrivals at TANNE westbound on T398.

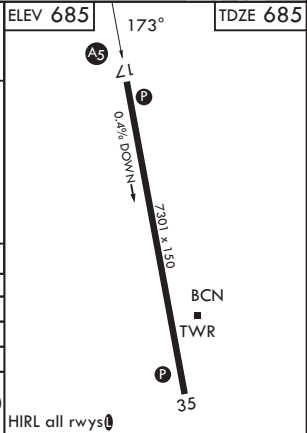
Procedure not authorized for arrivals at RQZ VORTAC eastbound on T398.

Procedure requires Redstone Tower approval when R2104A or R2104C are active.



GP 3.00°
TCH 46

CATEGORY	A	B	C	D	E
LPV DA	935-1		250	(300-1)	
LNAV/VNAV DA*	1113-1		428	(500-1)	
LNAV MDA**	1180-1		495	(500-1)	
CIRCLING***	1200-1 515 (600-1)	1240-1 555 (600-1)	1480-2¼ 795 (800-2¼)	1740-3 1055 (1100-3)	



REDSTONE ARSENAL, ALABAMA
Amdt 2A 14MAY26

34°41'N - 86°41'W

REDSTONE AAF (KHUA)

RNAV (GPS) RWY 17

SE-4, 14 MAY 2026 to 11 JUN 2026

SE-4, 14 MAY 2026 to 11 JUN 2026