

WAAS CH <b>81924</b> <b>W19A</b>	APP CRS <b>193°</b>	Rwy Ldg TDZE Apt Elev	<b>5516</b> <b>78</b> <b>80</b>
--	------------------------	-----------------------------	---------------------------------------

# RNAV (GPS) RWY 19

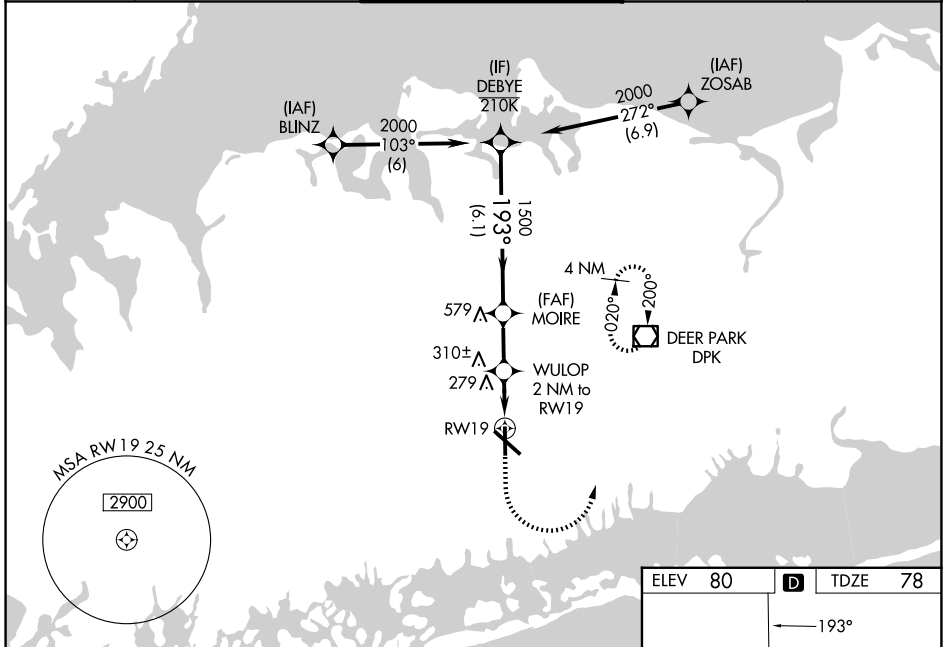
REPUBLIC (F/RG)

RNP APCH - GPS.

**⚠** Helicopter visibility reduction below  $\frac{3}{4}$  SM NA.  
For uncompensated Baro-VNAV systems, LNAV/VNAV NA below -12°C or above 54°C.

**MISSED APPROACH:**  
(Do not exceed 210K until DPK VOR/DME)  
Climb to 2000 then climbing left turn to 3000 direct DPK VOR/DME and hold, continue climb-in-hold to 3000.

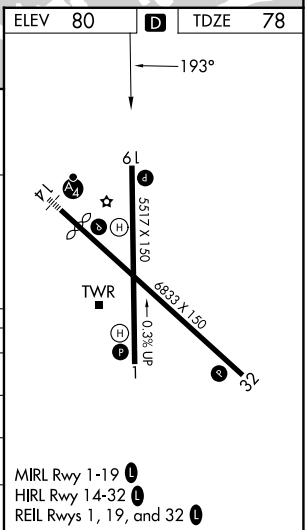
ATIS <b>126.65</b>	NEW YORK APP CON <b>128.125 269.0</b>	REPUBLIC TOWER ★ <b>118.8 (CTAF) 279.65</b>	GND CON <b>121.6 269.6</b>	UNICOM <b>122.95</b>
-----------------------	--	--	-------------------------------	-------------------------



NE-2, 14 MAY 2026 to 11 JUN 2026

NE-2, 14 MAY 2026 to 11 JUN 2026

	DEBYE		MOIRE		WULOP		RWY 19	
	2000		1500		800		800	
	193°		193°		193°		193°	
	6.1 NM		2.1 NM		0.8 NM		1.2 NM	
GP 3.20°	TCH 41							
CATEGORY	A		B		C		D	
LPV DA			328- $\frac{3}{4}$		250 (300- $\frac{3}{4}$ )			
LNAV/ VNAV DA			504-1 $\frac{1}{4}$		426 (500-1 $\frac{1}{2}$ )			
LNAV MDA	520-1		442 (500-1)		520-1 $\frac{3}{8}$		442 (500-1 $\frac{3}{8}$ )	
CIRCLING	640-1 560 (600-1)		720-1 640 (700-1)		860-2 $\frac{1}{4}$ 780 (800-2 $\frac{1}{4}$ )		1000-3 920 (1000-3)	



MIRL Rwy 1-19  
HIRL Rwy 14-32  
REIL Rws 1, 19, and 32