

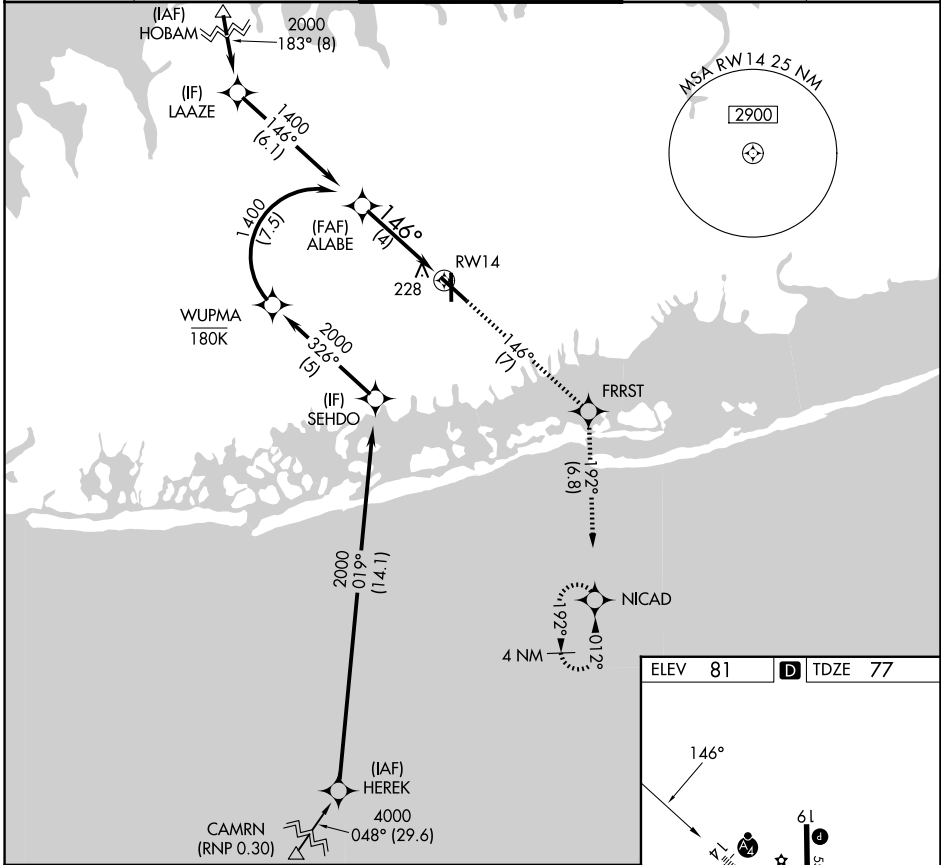
APP CRS	Rwy Ldg	<b>6157</b>
<b>146°</b>	TDZE	<b>77</b>
	Apt Elev	<b>81</b>

# RNAV (RNP) Z RWY 14

REPUBLIC (F'RG)

RNP AR APCH. RF required from HEREK.		MALSF	MISSED APPROACH: Climb to 2000 on track 146° to FRRST and on track 192° to NICAD and hold.
▼ For uncompensated Baro-VNAV systems, procedure NA below -12°C or above 48°C.			

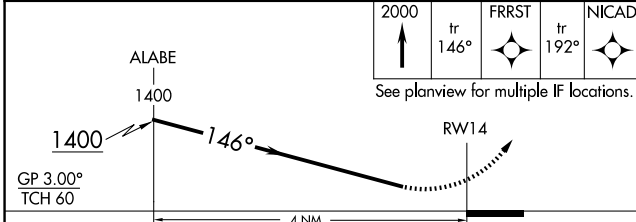
ATIS <b>126.65</b>	NEW YORK APP CON <b>128.125 269.0</b>	REPUBLIC TOWER ★ <b>118.8 (CTAF) 0 279.65</b>	GND CON <b>121.6 269.6</b>	UNICOM <b>122.95</b>
-----------------------	--	--	-------------------------------	-------------------------



NE-2, 14 MAY 2026 to 11 JUN 2026

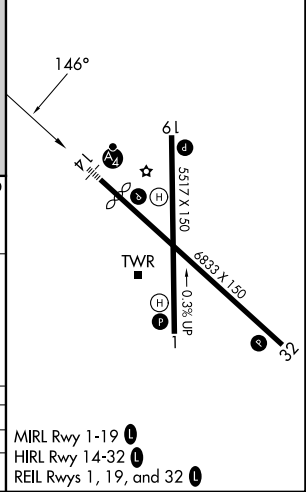
NE-2, 14 MAY 2026 to 11 JUN 2026

ELEV 81	<b>D</b> TDZE 77
---------	------------------



CATEGORY	A	B	C	D
RNP 0.30 DA		525-1 $\frac{3}{8}$	447 (500-1 $\frac{3}{8}$ )	

**AUTHORIZATION REQUIRED**



MIRL Rwy 1-19 **1**  
 HIRL Rwy 14-32 **1**  
 REIL Rwy 1, 19, and 32 **1**