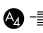


LOC I-BWD 109.1	APP CRS 175°	Rwy Ldg TDZE Apt Elev	5599 1387 1387
---------------------------	------------------------	-----------------------------	---

LOC RWY 17

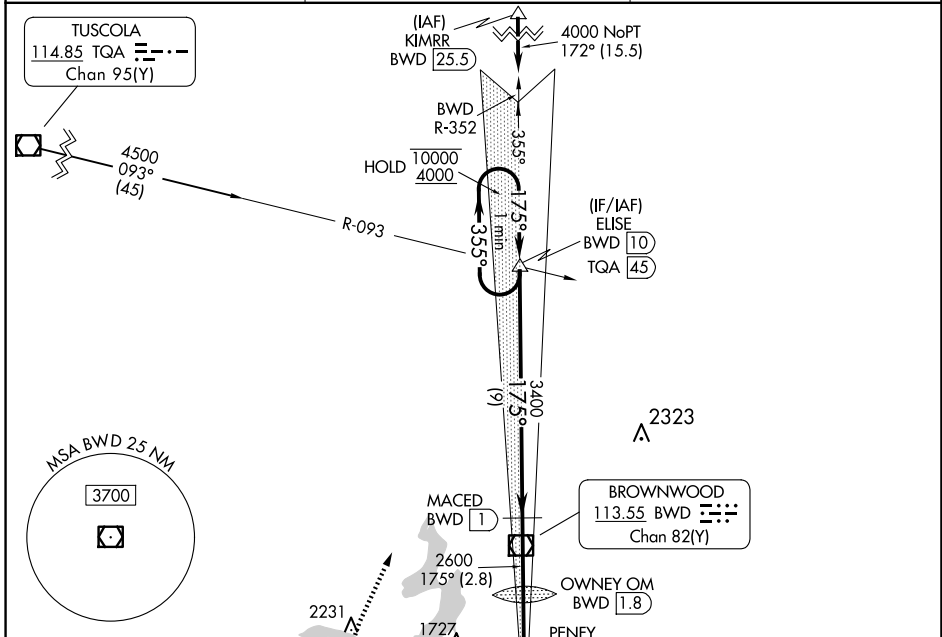
BROWNWOOD RGNL (BWD)

DME required. RADAR required for procedure entry at KIMRR.

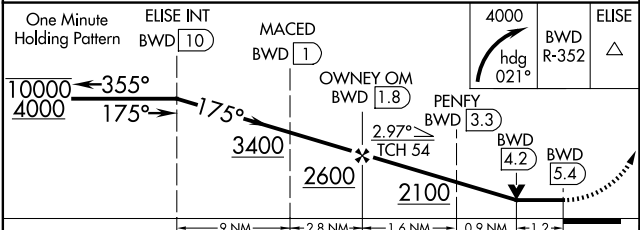
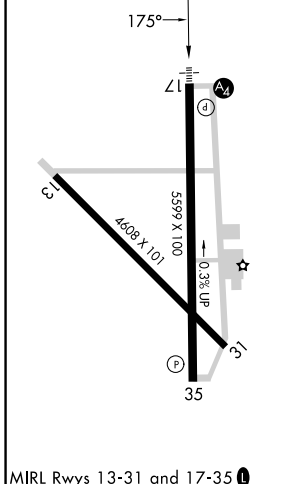
MALS 

MISSED APPROACH: Climbing right turn to 4000 on heading 021° and on BWD VOR/DME. DME use requires simultaneous reception of I-BWD and BWD DME.

AWOS-3 118.325	FORT WORTH CENTER 127.45 290.3	UNICOM 122.8 (CTAF)
--------------------------	--	-------------------------------



ELEV 1387	TDZE 1387
-----------	-----------



CATEGORY	A	B	C	D
S-LOC 17		1760- ³ / ₄	373 (400- ³ / ₄)	
CIRCLING	1820-1 433 (500-1)	1840-1 453 (500-1)	2040-1 ³ / ₄ 653 (700-1 ³ / ₄)	2160-2 ¹ / ₂ 773 (800-2 ¹ / ₂)

SC-3, 14 MAY 2026 to 11 JUN 2026

SC-3, 14 MAY 2026 to 11 JUN 2026