

WAAS CH 86419 W14A	APP CRS 139°	Rwy Ldg TDZE 755 Apt Elev 755	8101
--	------------------------	---	-------------

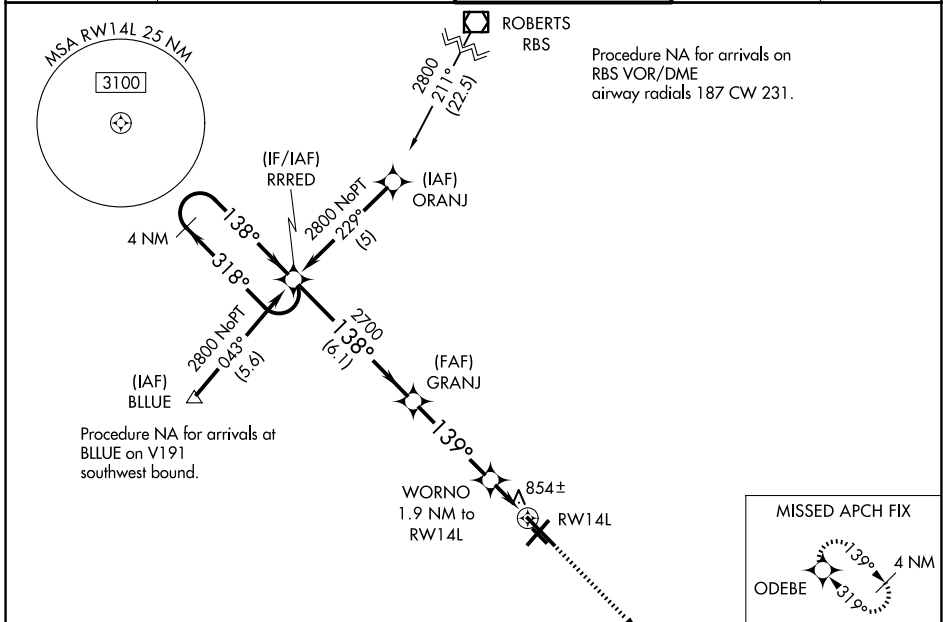
RNAV (GPS) RWY 14L

UNIVERSITY OF ILLINOIS/WILLARD (CMI)

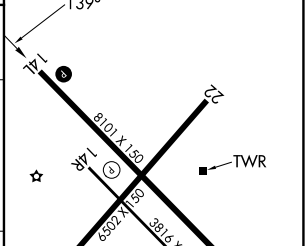
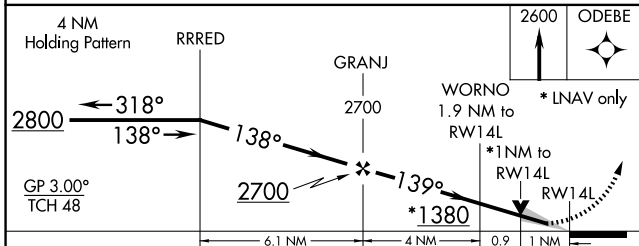
⚠ For uncompensated Baro-VNAV systems, LNAV/VNAV NA below -20°C (-4°F) or above 54°C (130°F).
⚠ When local altimeter setting not received, use Rantoul altimeter setting and increase all DA 41 feet and all MDA 60 feet, increase LNAV Cat C visibility ¼ mile. DME/DME RNP-0.3 NA. Baro-VNAV and ASR VDP NA when using Rantoul altimeter setting.

MISSED APPROACH: Climb to 2600 direct ODEBE and hold.

ATIS 124.85	CHAMPAIGN APP CON ★ 121.35 285.65 (319°-138°) 132.85 290.225 (139°-318°)	CHAMPAIGN TOWER ★ 120.4 (CTAF) 0 229.4	GND CON 121.8	UNICOM 122.95
-----------------------	--	---	-------------------------	-------------------------



ELEV 755	D TDZE 755
----------	-------------------



CATEGORY	A	B	C	D
LPV DA		955-¾	200 (200-¾)	
LNAV/VNAV DA		1170-1½	415 (500-1½)	
LNAV MDA		1120-1 365 (400-1)		1120-1¼ 365 (400-1¼)
CIRCLING	1240-1	485 (500-1)	1500-2¼ 745 (800-2¼)	1500-2½ 745 (800-2½)

HIRL Rwy 14L-32R **1**
 MIRL Rwy 4-22 **1**
 MIRL Rwy 14R-32L

EC-3, 14 MAY 2026 to 11 JUN 2026

EC-3, 14 MAY 2026 to 11 JUN 2026