


WAAS CH <b>61110</b> <b>W32A</b>	APP CRS <b>319°</b>	Rwy Ldg TDZE Apt Elev	<b>8101</b> <b>750</b> <b>755</b>
--	------------------------	-----------------------------	---

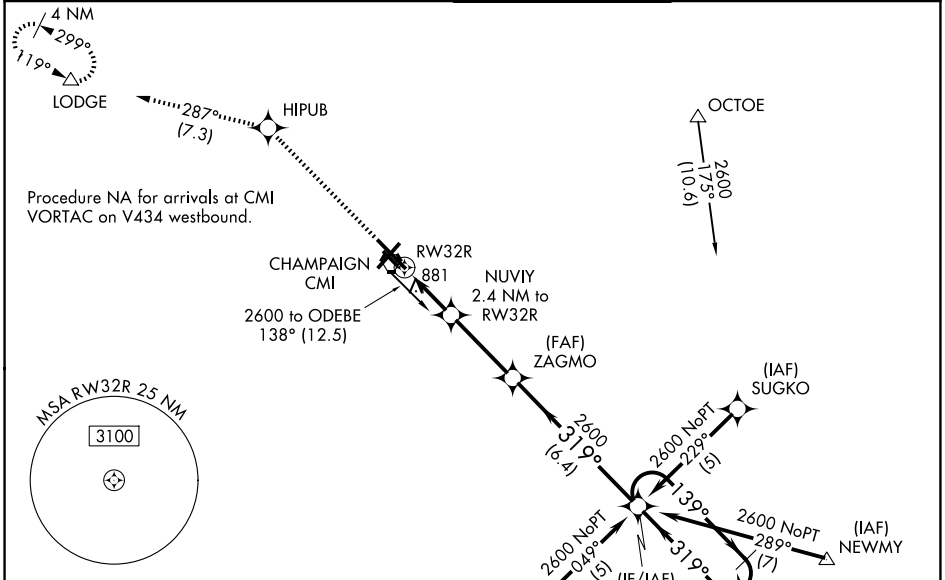
# RNAV (GPS) RWY 32R

UNIVERSITY OF ILLINOIS/WILLARD (CMI)

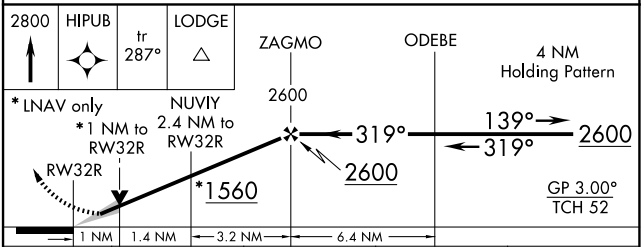
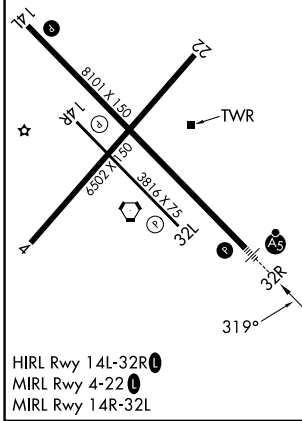
**⚠** For uncompensated Baro-VNAV systems, LNAV/VNAV NA below -1° C (-2° F) or above 54° C (130° F). DME/DME RNP-0.3 NA. Baro-VNAV and VDP NA when using Rantoul altimeter setting. When local altimeter setting not received, use Rantoul altimeter setting and increase all DA 41 feet, all MDA 60 feet; increase LNAV Cat C/D visibility to RVR 5500. For inoperative MALS, when using local or Rantoul altimeter setting, increase LNAV Cat C/D visibility to 1/2 miles.

**MALS**  
  
**MISSED APPROACH:**  
 Climb to 2800 direct  
 HIPUB and on track  
 287° to LODGE  
 and hold.

ATIS <b>124.85</b>	CHAMPAIGN APP CON ★ <b>121.35 285.65</b> (319°-138°) <b>132.85 290.225</b> (139°-318°)	CHAMPAIGN TOWER ★ <b>120.4</b> (CTAF) <b>0 229.4</b>	GND CON <b>121.8</b>	UNICOM <b>122.95</b>
-----------------------	--	---	-------------------------	-------------------------



ELEV 755	<b>D</b>	TDZE 750
----------	----------	----------



CATEGORY	A	B	C	D
LPV DA		1000/24	250 (300-1/2)	
LNAV/VNAV DA		1159/50	409 (500-1)	
LNAV MDA	1200/24	450 (500-1/2)	1200/45	450 (500-3/4)
CIRCLING	1240-1	485 (500-1)	1500-2 1/4 745 (800-2 1/4)	1500-2 1/2 745 (800-2 1/2)

EC-3, 14 MAY 2026 to 11 JUN 2026

EC-3, 14 MAY 2026 to 11 JUN 2026