

WAAS CH 58311 W04A	APP CRS 041°	Rwy Ldg TDZE 751 Apt Elev 755	6502
--	------------------------	---	-------------

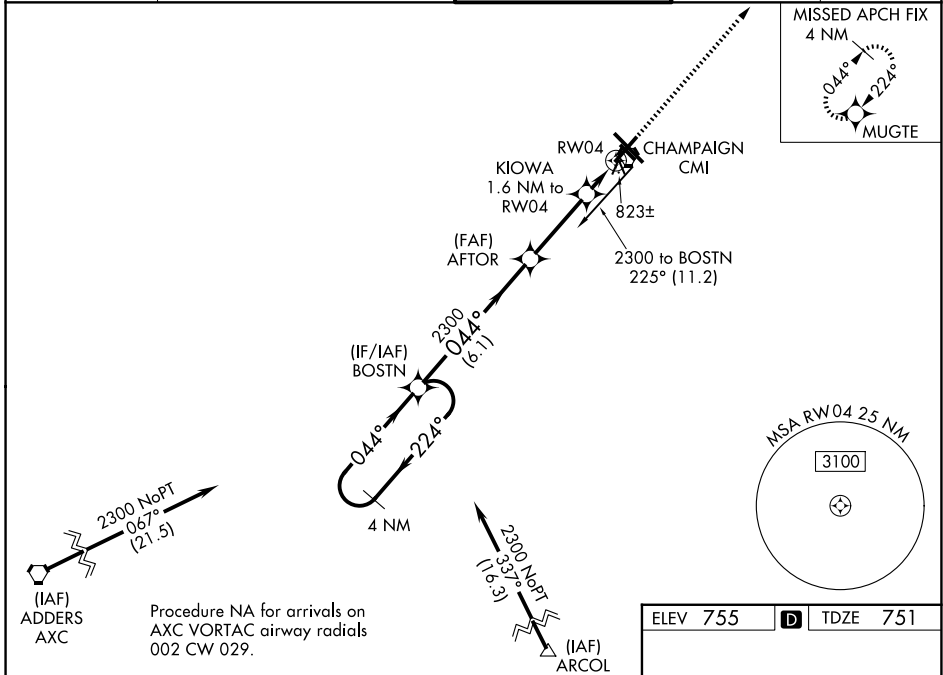
RNAV (GPS) RWY 4

UNIVERSITY OF ILLINOIS/WILLARD (CMI)

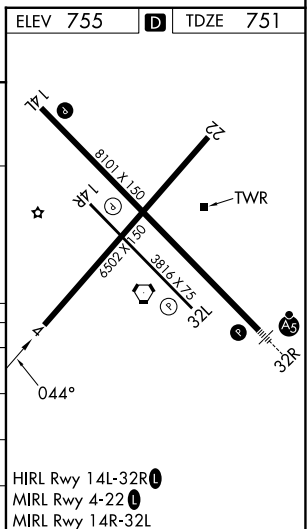
ASR For uncompensated Baro-VNAV systems, LNAV/VNAV NA below -21°C (-5°F) or above 54°C (130°F). When local altimeter setting not received, use Rantoul altimeter setting and increase all DA 41 feet, and all MDA 60 feet. Increase LNAV Cat D visibility ¼ mile. DME/DME RNP-0.3 NA. VDP and Baro-VNAV NA when using Rantoul altimeter setting.

MISSED APPROACH: Climb to 2800 direct MUGTE and hold.

ATIS 124.85	CHAMPAIGN APP CON ★ 121.35 285.65 (319°-138°) 132.85 290.225 (139°-318°)	CHAMPAIGN TOWER ★ 120.4 (CTAF) 0 229.4	GND CON 121.8	UNICOM 122.95
-----------------------	--	---	-------------------------	-------------------------



4 NM Holding Pattern	BOSTN	AFTOR	KIOWA	2800 MUGTE
2300 ← 224°	044° →	2300	1.6 NM to RW04	↑
GP 3.00° TCH 42	6.1 NM	3.1 NM	0.7 NM	0.9 NM
				0.9 NM to RW04
CATEGORY	A	B	C	D
LPV DA	1001-1 250 (300-1)			
LNAV/VNAV DA	1083-1¼ 332 (400-1¼)			
LNAV MDA	1080-1 329 (400-1)			
CIRCLING	1240-1	485 (500-1)	1500-2¼ 745 (800-2¼)	1500-2½ 745 (800-2½)



EC-3, 14 MAY 2026 to 11 JUN 2026

EC-3, 14 MAY 2026 to 11 JUN 2026