

LOC/DME I-DEC <b>110.9</b> Chan <b>46</b>	APP CRS <b>060°</b>	Rwy Idg TDZE Apt Elev	<b>8496</b> <b>677</b> <b>682</b>
---	------------------------	-----------------------------	---

# ILS or LOC RWY 6

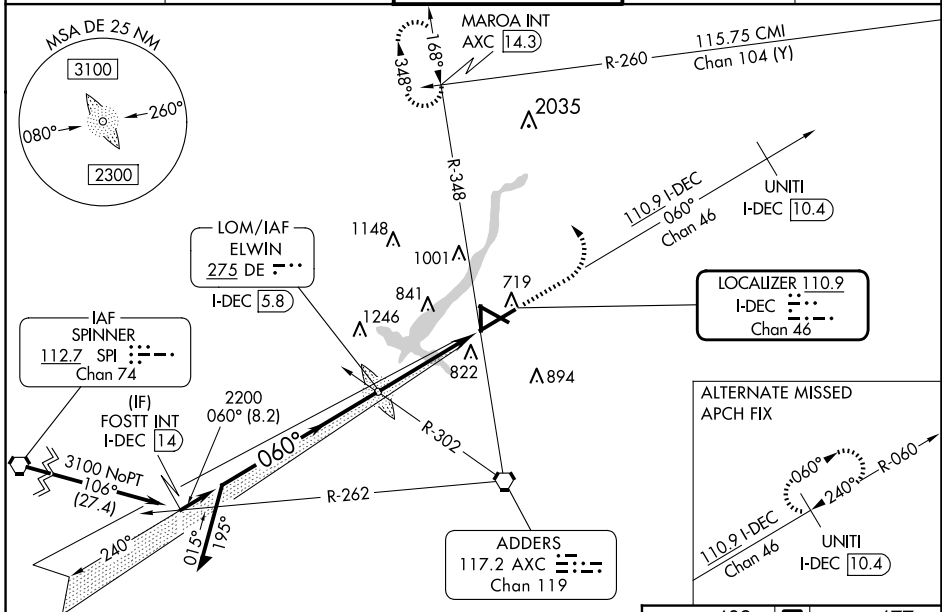
DECATUR (DEC)

**⚠** When local altimeter setting not received, use Lincoln altimeter setting and increase S-ILS 6 DA to 957 feet; increase all MDAs 80 feet and S-LOC 6 visibility Cat C/D to RVR 4000 and Circling visibility Cat C/D 1/4 SM. For inop ALS, increase S-LOC 6 Cat C/D visibility to 1 3/8 SM. For inop ALS when using Lincoln altimeter, increase S-ILS all Cats visibility to RVR 4500. VDP NA when using Lincoln altimeter setting. \* RVR 1800 authorized with use of FD or AP or HUD to DA (NA when using Lincoln altimeter setting).



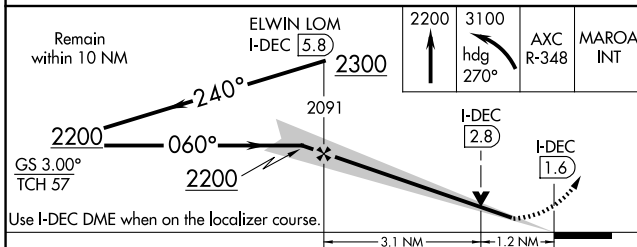
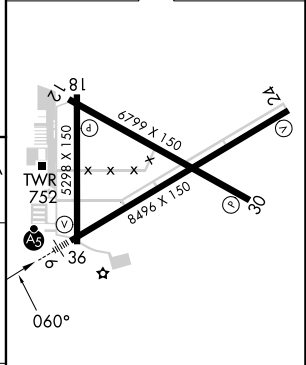
**MISSED APPROACH:** Climb to 2200 then climbing left turn to 3100 on heading 270° and AXC VORTAC R-348 to MAROA INT/ AXC 14.3 DME and hold.

ATIS <b>126.35</b>	CHAMPAIGN APP CON* <b>132.85 290.225</b>	DECATUR TOWER* <b>118.9(CTAF) 291.775</b>	GND CON <b>121.75 291.775</b>	UNICOM <b>122.95</b>
-----------------------	---	--	----------------------------------	-------------------------



Procedure NA for arrival on SPI VORTAC airway radials 062 CW 153.

ELEV	682	TDZE	677
------	-----	------	-----



CATEGORY	A	B	C	D
S-ILS 6*	877/24 200 (200-1/2)			
S-LOC 6	1140/24	463 (500-1/2)	1140/50	463 (500-1)
CIRCLING	1140-1 458 (500-1)	1240-1 558 (600-1)	1360-2 678 (700-2)	1360-2 1/4 678 (700-2 1/4)

HIRL Rwy 6-24					
MIRL Rwy 12-30 and 18-36					
FAF to MAP 4.3 NM					
Knots	60	90	120	150	180
Min:Seq	4:18	2:52	2:09	1:43	1:26

EC-3, 14 MAY 2026 to 11 JUN 2026

EC-3, 14 MAY 2026 to 11 JUN 2026