

WAAS CH 93738 W24A	APP CRS 240°	Rwy Idg 8496 TDZE 682 Apt Elev 682
--	------------------------	---

RNAV (GPS) RWY 24

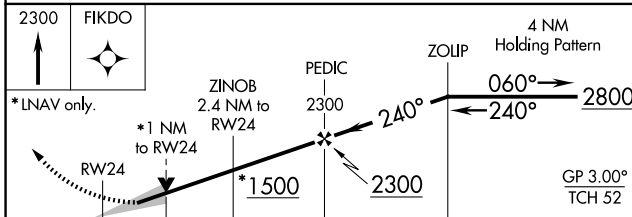
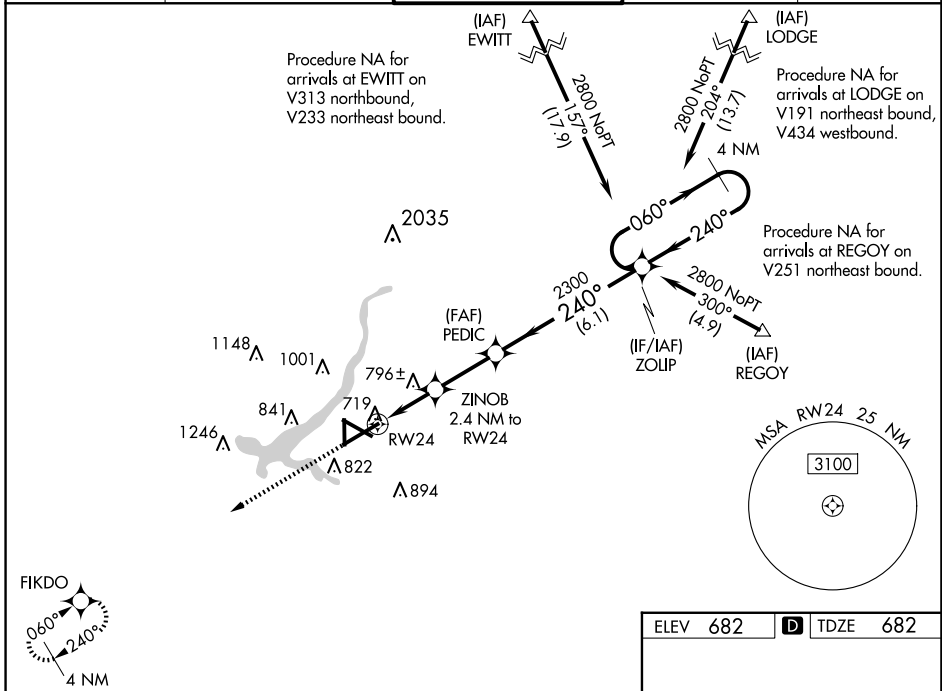
DECATUR (DEC)

RNP APCH.

▼ For uncompensated Baro-VNAV systems, LNAV/VNAV NA below -19°C or above 54°C.
Baro-VNAV and VDP NA when using Logan County altimeter setting.
▲ When local altimeter setting not received, use Logan County altimeter setting; increase LPV DA to 1012 feet and visibility all Cats ¼ mile, LNAV/VNAV DA to 1168 feet and visibility all Cats ¼ mile; increase all MDA 80 feet and LNAV visibility Cats C/D ¾ mile, Circling visibility Cats C/D ¼ mile.

MISSED APPROACH:
Climb to 2300 direct FIKDO and hold.

ATIS 126.35	CHAMPAIGN APP CON* 132.85 290.225	DECATUR TOWER* 118.9 (CTAF) 0 291.775	GND CON 121.75 291.775	UNICOM 122.95
-----------------------	---	---	----------------------------------	-------------------------



CATEGORY	A	B	C	D
LPV DA		932-¾	250 (300-¾)	
LNAV/VNAV DA		1088-1⅜	406 (500-1⅜)	
LNAV MDA		1060-1	378 (400-1)	
CIRCLING	1140-1 458 (500-1)	1240-1 558 (600-1)	1360-2 678 (700-2)	1360-2¼ 678 (700-2¼)

ELEV 682	TDZE 682
----------	----------

Obstacles: 81, 12, 752, 5298 X 150, 6799 X 150, 8496 X 150, 36, 24, 240°

HIRL Rwy 6-24

MIRL Rws 12-30 and 18-36

EC-3, 14 MAY 2026 to 11 JUN 2026

EC-3, 14 MAY 2026 to 11 JUN 2026