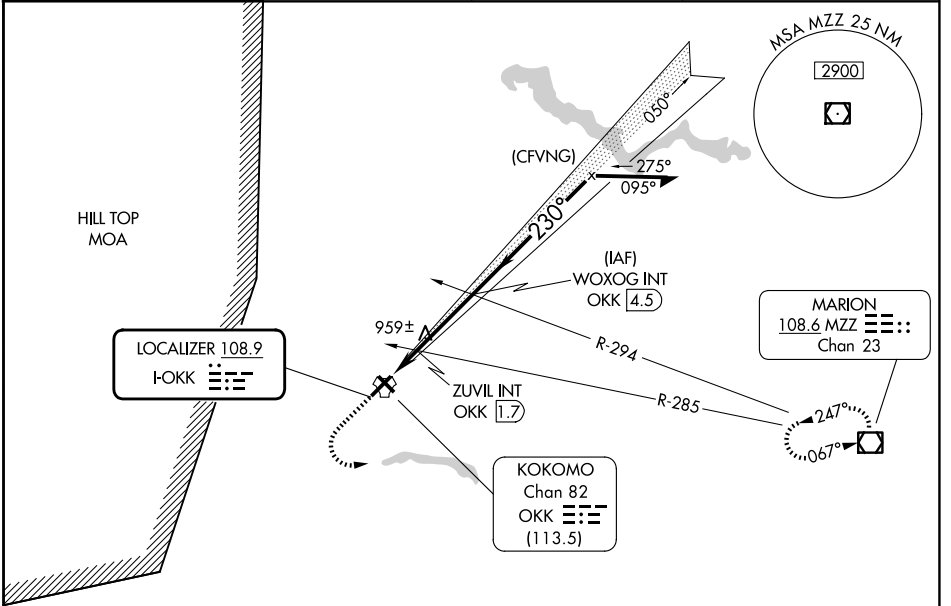


LOC I-OKK <b>108.9</b>	APP CRS <b>230°</b>	Rwy Ldg TDZE <b>6001 827</b>	Apt Elev <b>832</b>
---------------------------	------------------------	---------------------------------	------------------------

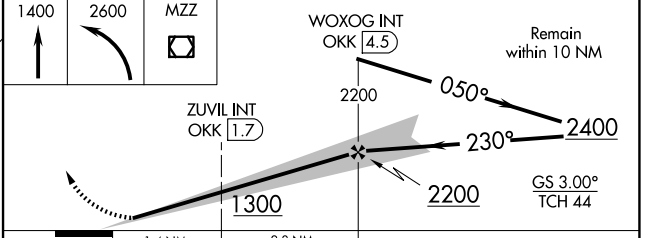
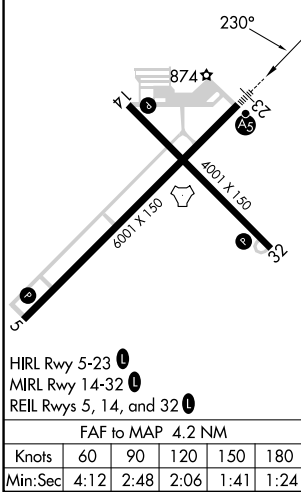
# ILS or LOC RWY 23

KOKOMO MUNI (OKK)

RADAR required for procedure entry.		MALSR 	MISSED APPROACH: Climb to 1400 then climbing left turn to 2600 direct MZZ VOR/DME and hold.
For inop ALS, increase S-LOC 23 Cat C/D visibility to 1½ SM. * DME from OKK			
AWOS-3PT <b>128.675</b>	GRISSOM APP CON* <b>121.05 338.275</b>	CLNC DEL <b>120.0</b>	UNICOM <b>123.0 (CTAF) 0</b>



ELEV 832	TDZE 827
----------	----------



CATEGORY	A	B	C	D
S-ILS 23	1027-½ 200 (200-½)			
S-LOC 23	1300-½	473 (500-½)	1300-1	473 (500-1)
CIRCLING	1300-1	468 (500-1)	1400-1½ 568 (600-1½)	1420-2 588 (600-2)
ZUVIL FIX MINIMUMS* (DUAL VOR RECEIVERS or DME REQUIRED)				
S-LOC 23	1220-½	393 (400-½)	1220-¾	393 (400-¾)
CIRCLING	1260-1 428 (500-1)	1300-1 468 (500-1)	1400-1½ 568 (600-1½)	1420-2 588 (600-2)

EC-2, 14 MAY 2026 to 11 JUN 2026

EC-2, 14 MAY 2026 to 11 JUN 2026