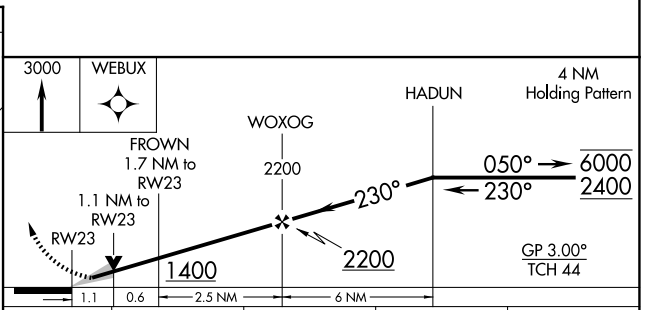
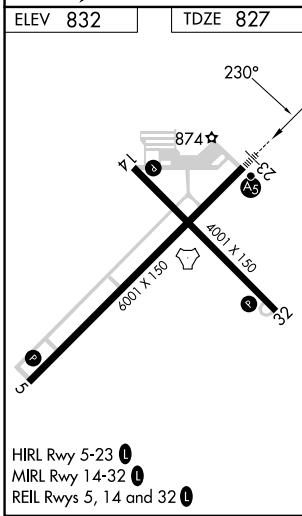
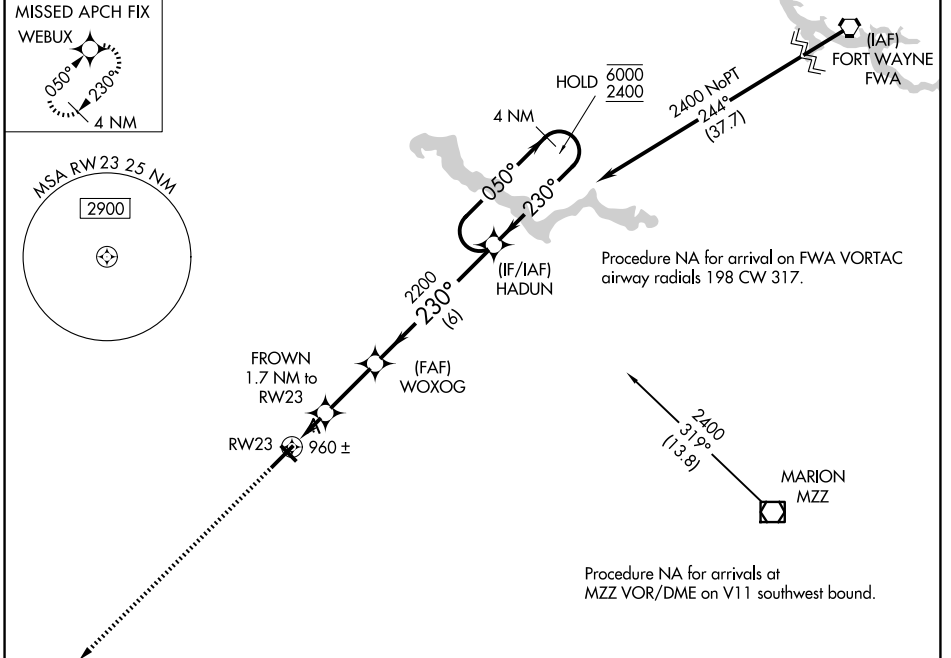


WAAS CH <b>40119</b> <b>W23A</b>	APP CRS <b>230°</b>	Rwy Ldg TDZE Apt Elev	<b>6001</b> <b>827</b> <b>832</b>
--	------------------------	-----------------------------	---

# RNAV (GPS) RWY 23

KOKOMO MUNI (OKK)

RNP APCH - GPS.		MALSR	MISSED APPROACH: Climb to 3000 direct WEBUX and hold.
For uncompensated Baro-VNAV systems, LNAV/VNAV NA below -16°C or above 54°C.			
AWOS-3PT <b>128.675</b>	GRISSOM APP CON * <b>121.05 338.275</b>	CLNC DEL <b>120.0</b>	UNICOM <b>123.0 (CTAF) 0</b>



CATEGORY	A	B	C	D
LPV DA		1029-1/2	202 (200-1/2)	
LNAV/VNAV DA		1220-5/8	393 (400-5/8)	
LNAV MDA	1220-1/2	393 (400-1/2)	1220-5/8	393 (400-5/8)
CIRCLING	1280-1	1300-1	1400-1 1/2	1420-2
	448 (500-1)	468 (500-1)	568 (600-1 1/2)	588 (600-2)

EC-2, 14 MAY 2026 to 11 JUN 2026

EC-2, 14 MAY 2026 to 11 JUN 2026