

TACAN RWY 27

TACAN VOK Chan 41	APCH CRS 277°	Rwy ldg THRE 904 Arprt Elev 912
----------------------	------------------	---

[USAF]

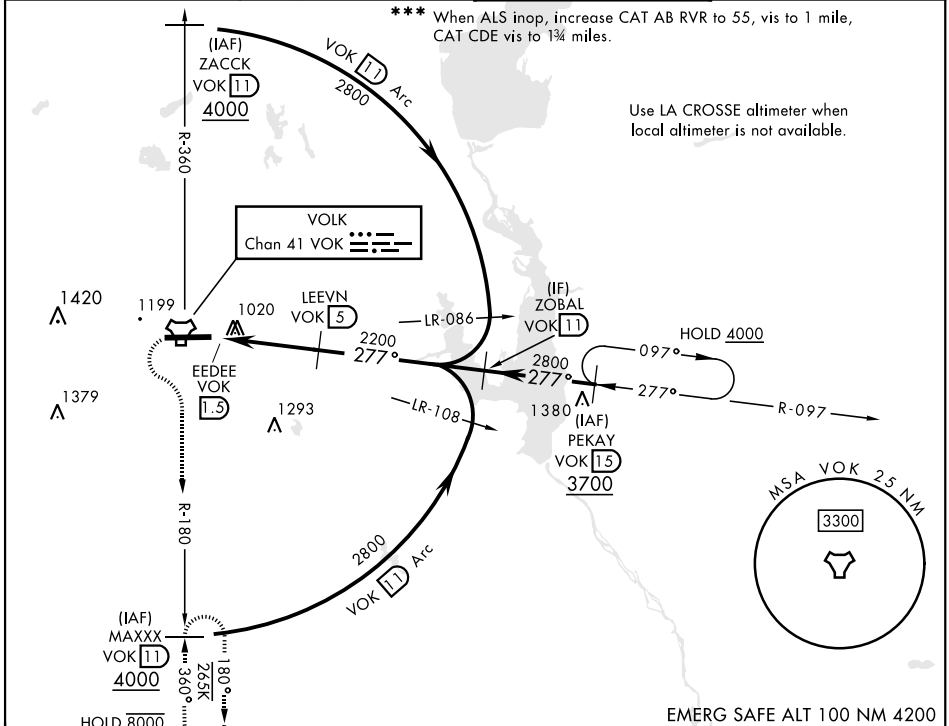
VOLK FLD (KVOK)

▼ * When ALS inop, increase CAT AB RVR to 55, vis to 1 mile, CAT CDE vis to 1 3/8 miles.
 ** Circling not authorized South of Rwy 9-27.

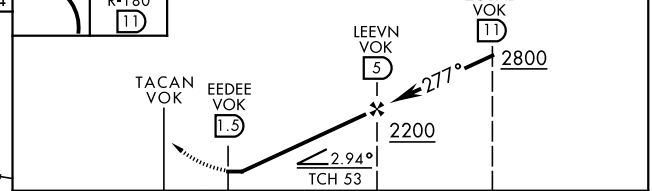
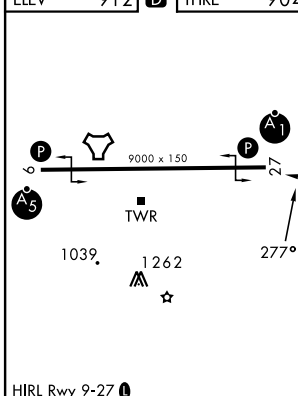


MISSED APPROACH: Climbing left turn to 3000, intercept VOK TACAN R-180 to MAXXX and hold.

ATIS 134.35 257.85	APP CON 135.25 244.875	TOWER * 127.5 0 (CTAF) 239.25 0	GND CON 121.9 275.8
------------------------------	----------------------------------	---	-------------------------------



ELEV 912	D	THRE 904
----------	---	----------



CATEGORY	A	B	C	D	E
S-27 *	1360/24	456 (500-1/2)	1360/45	456 (500-7/8)	
CIRCLING **	1400-1	1500-1	1500-1 1/2	1500-2	1580-2 1/4
	488 (500-1)	588 (600-1)	588 (600-1 1/2)	588 (600-2)	668 (700-2 1/4)
LA CROSSE ALTIMETER SETTING MINIMUMS					
S-27 ***	1500/24	596 (600-3/4)	1500-1 1/4	596 (600-1 1/4)	
CIRCLING **	1540-1	1640-1	1640-2	1640-2 1/4	1720-2 3/4
	628 (700-1)	728 (800-1)	728 (800-2)	728 (800-2 1/4)	808 (900-2 3/4)

TACAN RWY 27

EC-3, 14 MAY 2026 to 11 JUN 2026

EC-3, 14 MAY 2026 to 11 JUN 2026