

VORTAC SPS <b>112.7</b> Chan <b>74</b>	APP CRS <b>196°</b>	Rwy Idg TDZE Apt Elev <b>N/A</b> <b>N/A</b> <b>1005</b>
--	------------------------	--

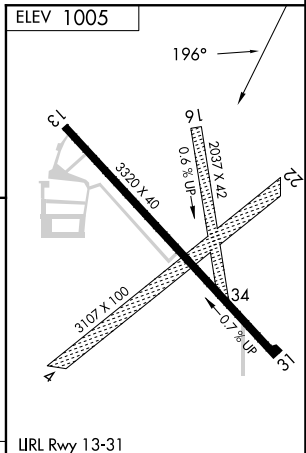
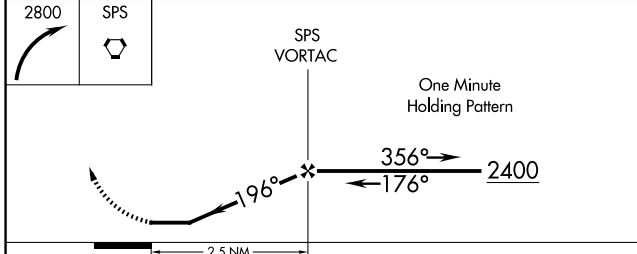
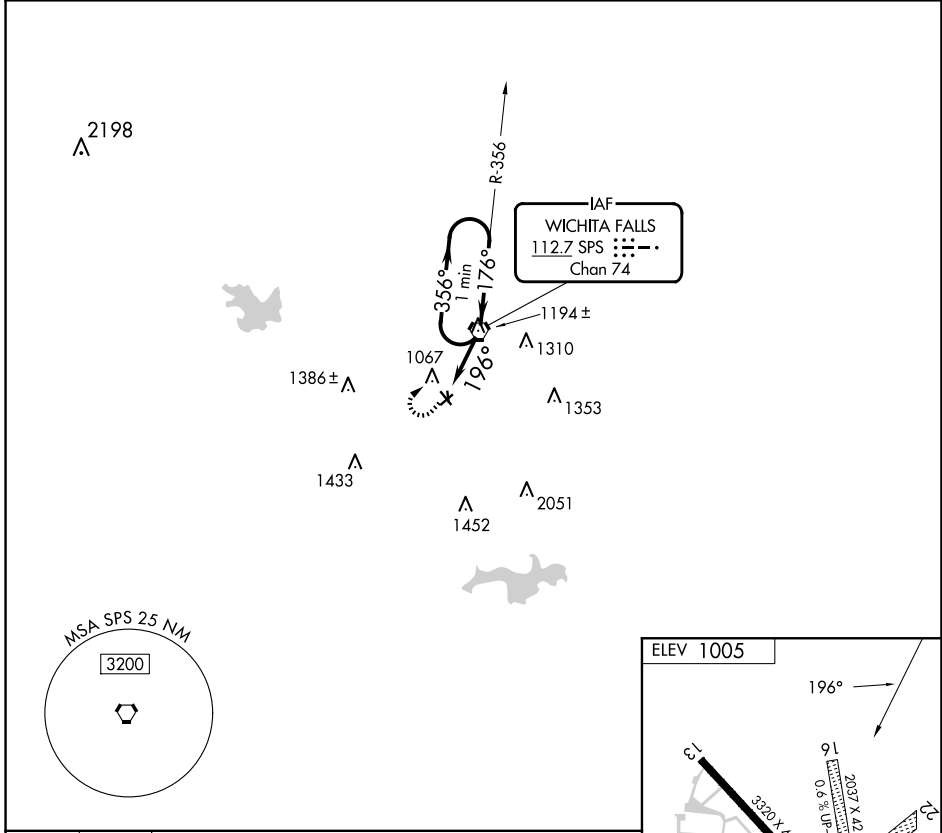
# VOR-B

WICHITA FALLS/ WICHITA VALLEY (F14)

**▼** Use Sheppard AFB/Wichita Falls Muni altimeter setting; when not received, use Frederick, OK altimeter setting and increase all MDA 100 feet. Increase Circling Cat C visibility ¼ mile. Circling NA to Rwys 4/22 and 16/34. Procedure NA at night.

**▲ NA** MISSED APPROACH: Climbing right turn to 2800 direct SPS VORTAC and hold.

SHEPPARD APP CON ★ <b>118.2 292.3</b>	UNICOM <b>122.8 (CTAF)</b>
--	-------------------------------



CATEGORY	A	B	C	D	FAF to MAP 2.5 NM					
CIRCLING	1520-1 515 (600-1)	1680-1 675 (700-1)	1700-2 695 (700-2)	NA	Knots	60	90	120	150	180
					Min:Sec	2:30	1:40	1:15	1:00	0:50

# VOR-B

SC-2, 14 MAY 2026 to 11 JUN 2026

SC-2, 14 MAY 2026 to 11 JUN 2026