

LOC I-AZO <b>110.9</b>	APP CRS <b>354°</b>	Rwy Ldg TDZE Apt Elev	<b>6502</b> <b>868</b> <b>874</b>
---------------------------	------------------------	-----------------------------	---

# ILS or LOC RWY 35

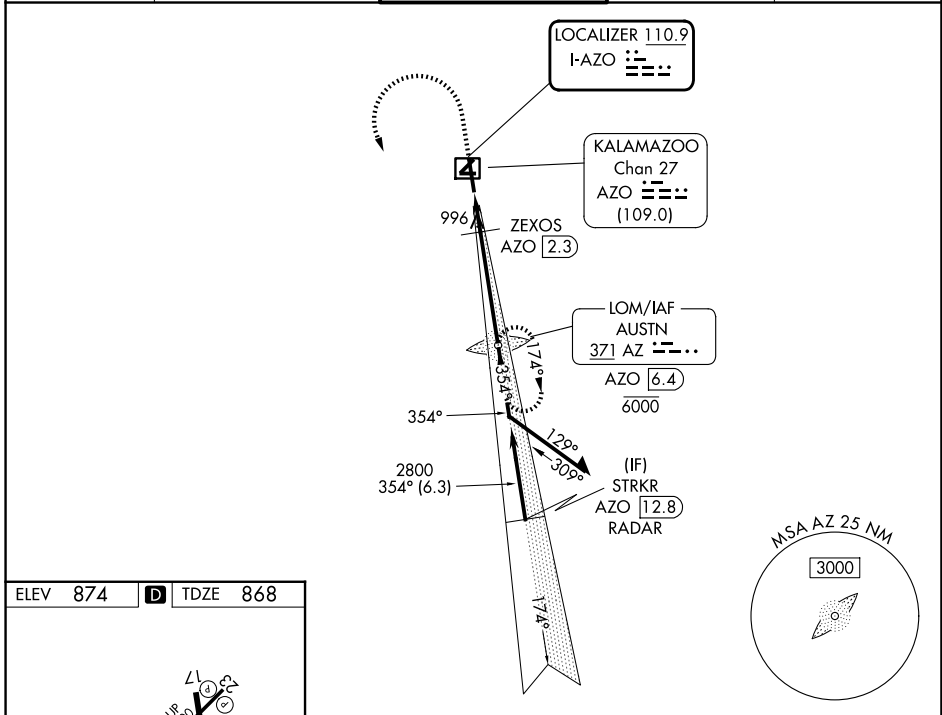
KALAMAZOO/BATTLE CREEK INTL (AZO)

ADF required. DME required for LOC only. RADAR required for procedure entry.

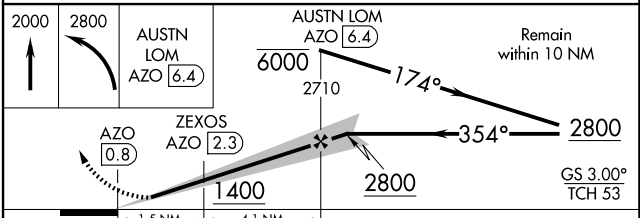
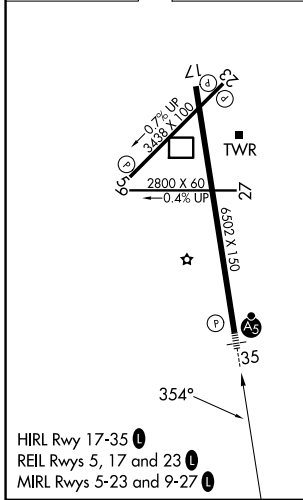
**NA** DME from AZO DME. DME use requires simultaneous reception of I-AZO and AZO DME. Circling Rwy 5, 9, 23, 27 NA at night. When local altimeter setting not received, use BTL altimeter setting: increase S-ILS 35 DA to 1112 feet; increase all MDAs 60 feet and visibility S-LOC 35 Cats C/D to RVR 4500 and Circling visibility Cats C/D ¼ SM. \* RVR 1800 authorized with use of FD or AP or HUD to DA (NA when using Battle Creek altimeter setting).

**MALSR** MISSED APPROACH: Climb to 2000 then climbing left turn to 2800 direct AUSTN LOM/AZO 6.4 DME and hold.

ATIS <b>127.25</b>	GREAT LAKES APP CON * <b>121.2 239.25</b>	KALAMAZOO TOWER * <b>118.3 (CTAF) 0 257.875</b>	GND CON <b>121.9</b>	UNICOM <b>122.95</b>
-----------------------	--	--	-------------------------	-------------------------



ELEV 874	<b>D</b>	TDZE 868
----------	----------	----------



CATEGORY	A	B	C	D
S-ILS 35*	1068/24 200 (200-½)			
S-LOC 35	1260/24	392 (400-½)	1260/35	392 (400-¾)
CIRCLING	1340-1	466 (500-1)	1560-2 686 (700-2)	1560-2¼ 686 (700-2¼)

EC-1, 14 MAY 2026 to 11 JUN 2026

EC-1, 14 MAY 2026 to 11 JUN 2026