

WAAS CH <b>61102</b> <b>W35A</b>	APP CRS <b>354°</b>	Rwy Ldg <b>6502</b> TDZE <b>868</b> Apt Elev <b>874</b>
--	------------------------	---

# RNAV (GPS) RWY 35

KALAMAZOO/BATTLE CREEK INTL (AZO)

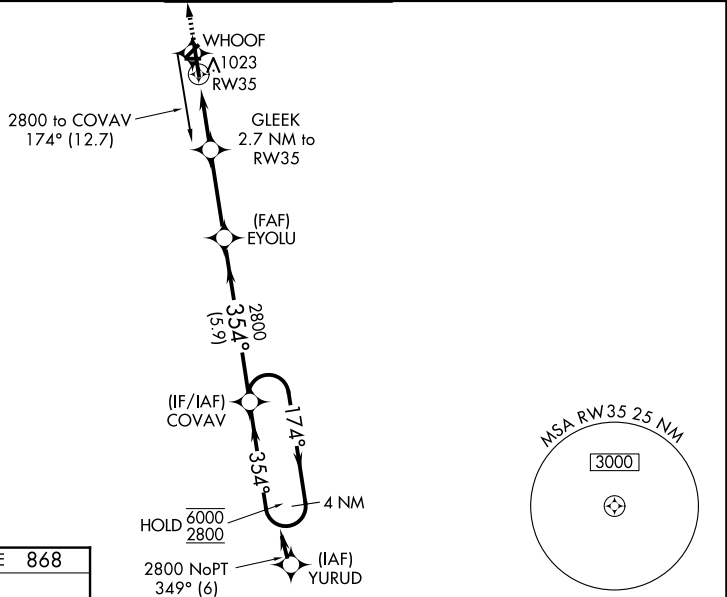
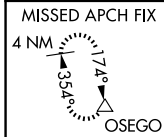
RNP APCH - GPS.

⚠ Circling Rwy 5, 9, 17, 23, 27 NA at night. For uncompensated Baro-VNAV systems, LNAV/VNAV NA below -19°C or above 54°C. When local altimeter setting not received, use BTL altimeter setting and increase LPV DA to 1112 feet; increase LNAV/VNAV DA to 1308 and all visibilities to RVR 4000. Increase all MDAs 60 feet and LNAV visibility Cats C and D to RVR 5000 and Circling visibility Cats C and D ¼ SM. Baro-VNAV and VDP NA when using BTL altimeter setting. For inop ALS when using BTL altimeter setting, increase LNAV Cats C and D visibility to 1 ½ SM. \* RVR 1800 authorized with use of FD or AP or HUD to DA (NA when using BTL altimeter setting).

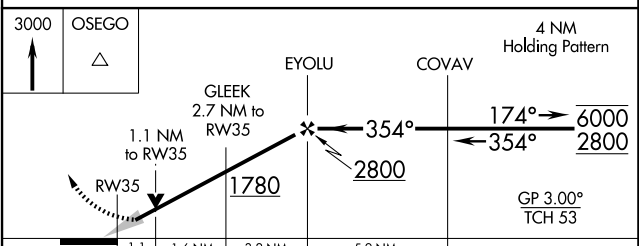
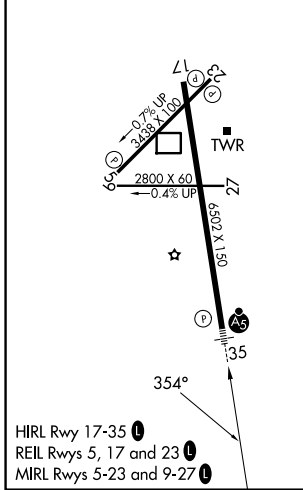
MALSR

MISSED APPROACH:  
Climb to 3000 direct  
OSEGO and hold.

ATIS <b>127.25</b>	GREAT LAKES APP CON * <b>121.2 239.25</b>	KALAMAZOO TOWER * <b>118.3 (CTAF) 0 257.875</b>	GND CON <b>121.9</b>	UNICOM <b>122.95</b>
-----------------------	--	--	-------------------------	-------------------------



ELEV <b>874</b>	<b>D</b>	TDZE <b>868</b>
-----------------	----------	-----------------



CATEGORY	A	B	C	D
LPV DA *		1068/24	200 (200-½)	
LNAV/VNAV DA		1264/35	396 (400-¾)	
LNAV MDA	1280/24	412 (500-½)	1280/40	412 (500-¾)
CIRCLING	1340-1	466 (500-1)	1560-2 686 (700-2)	1560-2¼ 686 (700-2¼)

EC-1, 14 MAY 2026 to 11 JUN 2026

EC-1, 14 MAY 2026 to 11 JUN 2026