

WAAS CH 45548	APP CRS 247°	Rwy Ldg TDZE Apt Elev	5028 682 690
-------------------------	------------------------	-----------------------------	---

RNAV (GPS) RWY 25

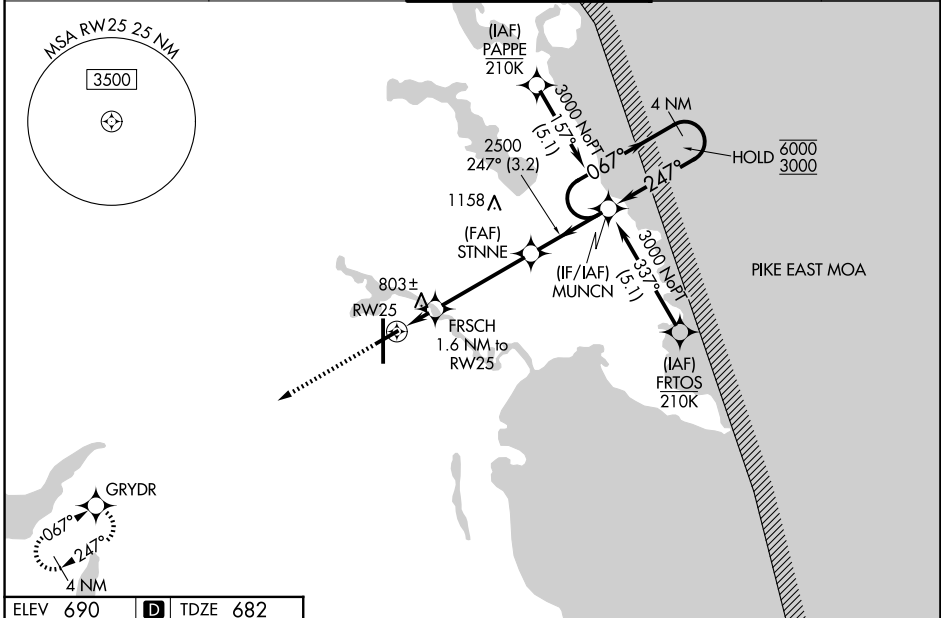
ALPENA COUNTY RGNL (APN)

RNP APCH - GPS.

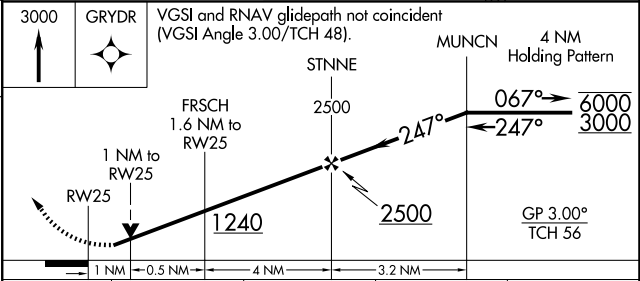
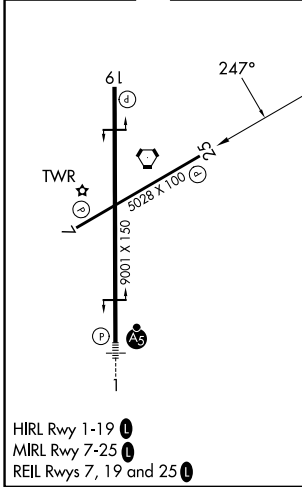
⚠ For uncompensated Baro-VNAV systems, LNAV/VNAV NA below -19°C or above 54°C. Rwy 25 helicopter visibility reduction below 3/4 SM NA. Baro-VNAV and VDP NA when using PZQ altimeter setting. When local altimeter setting not received, use PZQ altimeter setting and increase LPV DA to 1018 feet; increase LNAV/VNAV DA to 1115 feet and all visibilities 1/4 SM. Increase all MDAs 60 feet and LNAV visibility Cat C/D 1/4 SM.

MISSED APPROACH:
Climb to 3000 direct GRYDR and hold.

ATIS★ 120.675 327.05	ALPENA APP CON★ 128.425 379.3	ALPENA TOWER★ 121.35 (CTAF) 0 318.1	GND CON 121.9 275.8	UNICOM 122.95
--------------------------------	---	---	-------------------------------	-------------------------



ELEV 690	D	TDZE 682
----------	----------	----------



CATEGORY	A	B	C	D
LPV DA		963-1	281 (300-1)	
LNAV/VNAV DA		1060-1	378 (400-1)	
LNAV MDA		1060-1	378 (400-1)	
CIRCLING	1140-1	450 (500-1)	1220-1½ 530 (600-1½)	1300-2 610 (700-2)

EC-1, 14 MAY 2026 to 11 JUN 2026

EC-1, 14 MAY 2026 to 11 JUN 2026