

VORTAC APN 116.5 Chan 112	APP CRS 175°	Rwy Ldg TDZE Apt Elev	9001 683 690
---	------------------------	-----------------------------	---

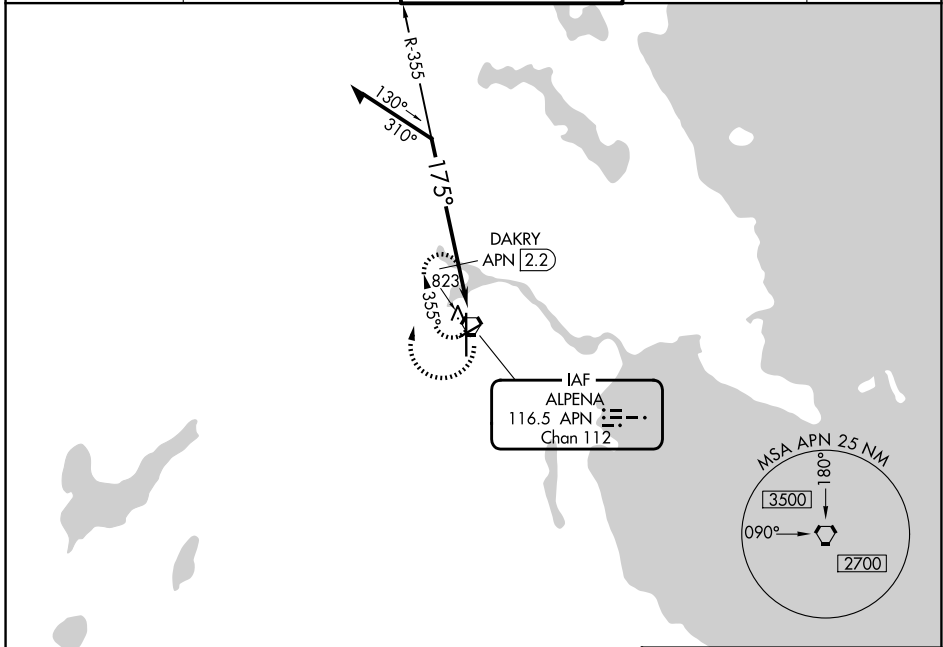
VOR RWY 19

ALPENA COUNTY RGNL (APN)

▽ Rwy 19 helicopter visibility reduction below 3/4 SM NA.

MISSED APPROACH: Climbing right turn to 2500 in APN VORTAC holding pattern.

ATIS 120.675 327.05	ALPENA APP CON ★ 128.425 379.3	ALPENA TOWER ★ 121.35 (CTAF) 0 318.1	GND CON 121.9 275.8	UNICOM 122.95
-------------------------------	--	--	-------------------------------	-------------------------



EC-1, 14 MAY 2026 to 11 JUN 2026

EC-1, 14 MAY 2026 to 11 JUN 2026

Remain within 10 NM		APN VORTAC		2500	APN
VGSI and descent angles not coincident (VGSI Angle 3.00/TCH 39).		355°	175°	355°	175°
TCH 55		3.18°	0.6 NM	1.2 NM	
CATEGORY	A	B	C	D	
S-19	1340-1	657 (700-1)	1340-1 7/8	657 (700-1 7/8)	
CIRCLING	1340-1	650 (700-1)	1340-1 7/8	1340-2	650 (700-2)
DAKRY FIX MINIMUMS					
S-19	1100-1	417 (500-1)	1100-1 1/8	417 (500-1 1/8)	
CIRCLING	1140-1	450 (500-1)	1220-1 1/2	1280-2	590 (600-2)

