

LOC/DME I-DCU <b>110.55</b> Chan 42(Y)	APP CRS <b>185°</b>	Rwy Ldg <b>6107</b> TDZE <b>592</b> Apt Elev <b>592</b>
--	------------------------	---

# ILS or LOC RWY 18

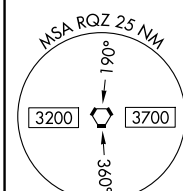
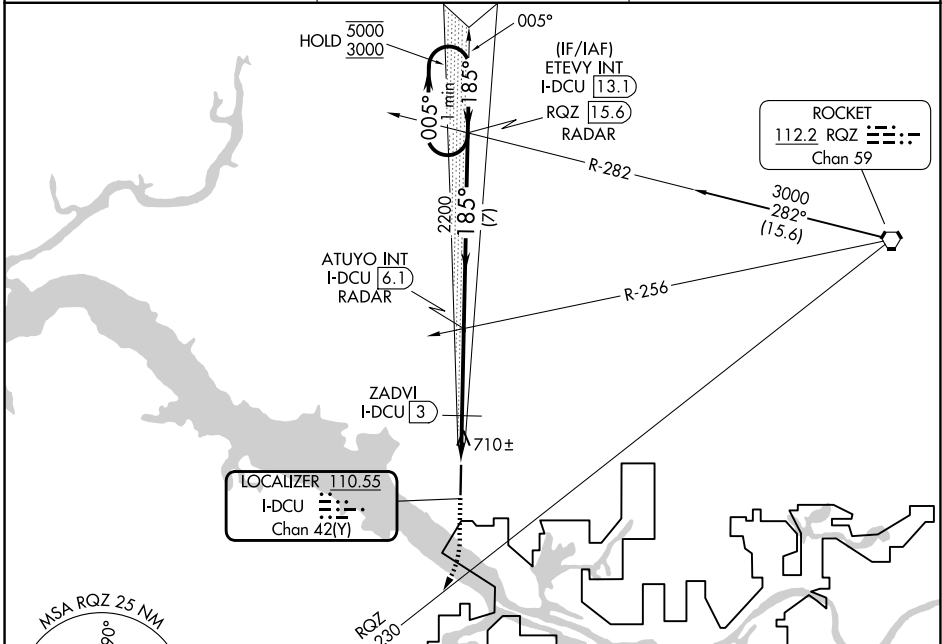
PRYOR FLD RGNL (DCU)

DME required.

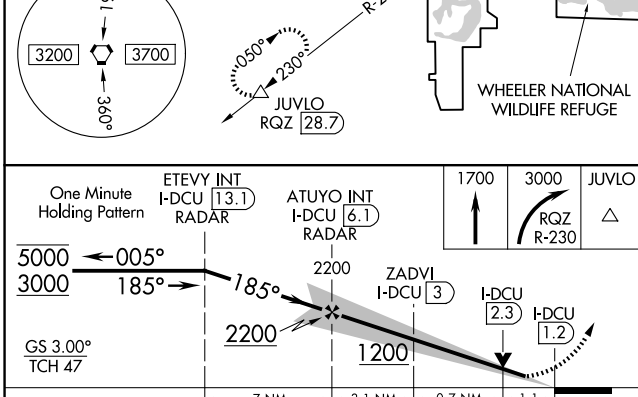
**▽**  
**▲**

MISSED APPROACH: Climb to 1700, then climbing right turn to 3000 on RQZ VORTAC R-230 to JUVLO/RQZ 28.7 DME and hold.

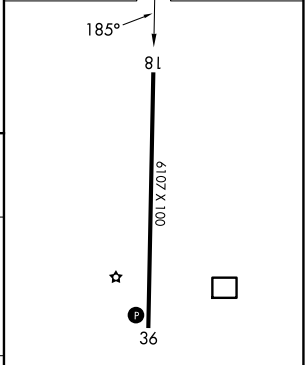
ASOS <b>118.375</b>	HUNTSVILLE APP CON* <b>118.05 239.0</b>	UNICOM <b>123.075 (CTAF) 0</b>
------------------------	--	-----------------------------------



ELEV 592	TDZE 592
----------	----------



One Minute Holding Pattern	ETEVY INT I-DCU 13.1	ATUYO INT I-DCU 6.1	1700	3000	JUVLO
5000 ← 005°	185° →	2200	ZADVI I-DCU 3	I-DCU 2.3	I-DCU 1.2
GS 3.00° TCH 47	785°	1200	7 NM	3.1 NM	0.7 NM
					1.1
CATEGORY	A	B	C	D	
S-ILS 18		792-¾	200 (200-¾)		
S-LOC 18	980-1	388 (400-1)	980-1⅛	388 (400-1⅛)	
CIRCLING	1040-1 448 (500-1)	1060-1 468 (500-1)	1340-2¼ 748 (800-2¼)	1340-2½ 748 (800-2½)	



HIRL Rwy 18-36	REIL Rws 18 and 36
FAF to MAP 4.9 NM	
Knots	60 90 120 150 180
Min:Sec	4:54 3:16 2:27 1:58 1:38

SE-4, 14 MAY 2026 to 11 JUN 2026

SE-4, 14 MAY 2026 to 11 JUN 2026