

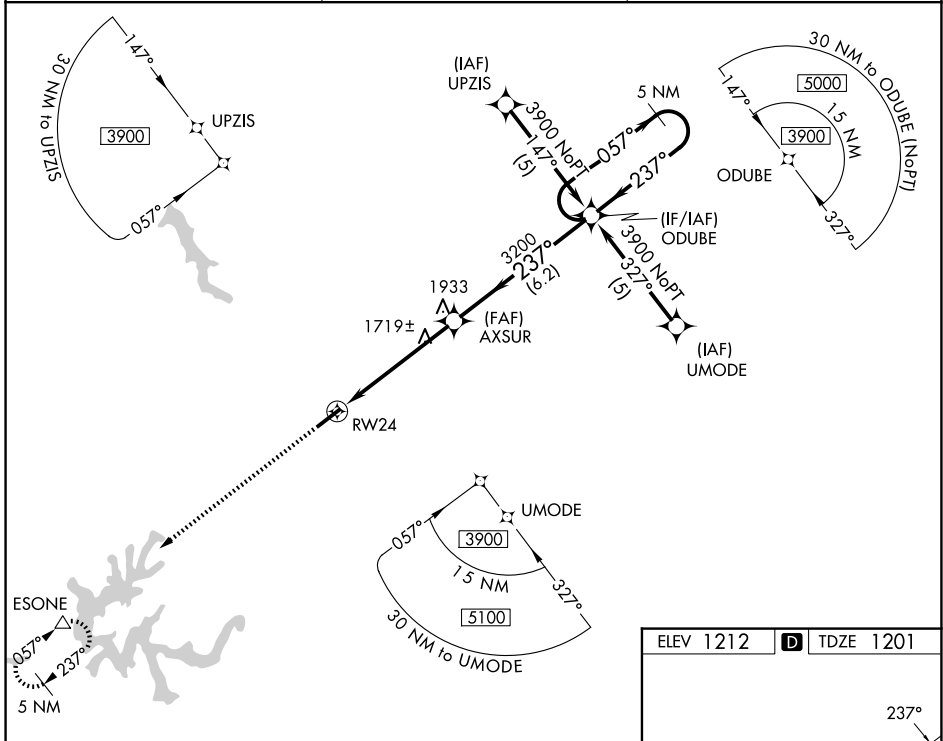
WAAS CH <b>78108</b> <b>W24A</b>	APP CRS <b>237°</b>	Rwy Ldg TDZE Apt Elev	<b>5200</b> <b>1201</b> <b>1212</b>
--	------------------------	-----------------------------	---

# RNAV (GPS) RWY 24

LONDON/CORBIN/MAGEE (L.O.Z)

RNP APCH.	<p>Visibility reduction by helicopters NA. When local altimeter setting not received, use Somerset altimeter setting: increase LPV DA to 1610 feet and visibility all Cats ¼ SM; increase all MDAs 100 feet and LNAV Cats C/D and Circling Cats A/C/D visibility ½ SM.</p>	<p>MISSED APPROACH: Climb to 3900 direct ESONE and hold.</p>
-----------	--	--

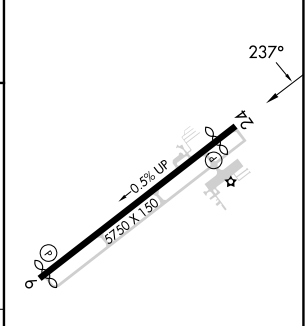
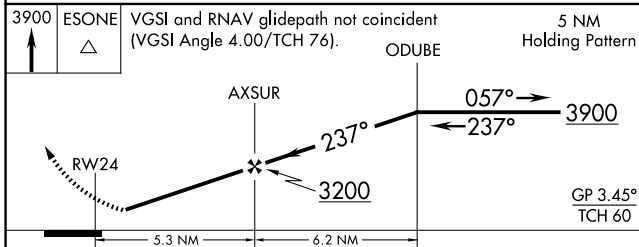
ASOS <b>119.075</b>	INDIANAPOLIS CENTER <b>124.625 371.925</b>	UNICOM <b>123.0</b> (CTAF) <b>0</b>
------------------------	---	--



SE-1, 14 MAY 2026 to 11 JUN 2026

SE-1, 14 MAY 2026 to 11 JUN 2026

ELEV 1212	<b>D</b> TDZE 1201
-----------	--------------------



CATEGORY	A	B	C	D
LPV DA	1510-1 309 (300-1)			NA
LNAV MDA	1980-1 779 (800-1)	1980-1¼ 779 (800-1¼)	1980-2¼ 779 (800-2¼)	1980-2½ 779 (800-2½)
CIRCLING	1980-1 768 (800-1)	2040-1¼ 828 (900-1¼)	2040-2½ 828 (900-2½)	2040-2¾ 828 (900-2¾)

MIRL Rwy 6-24 **0**  
REIL Rws 6 and 24 **0**