

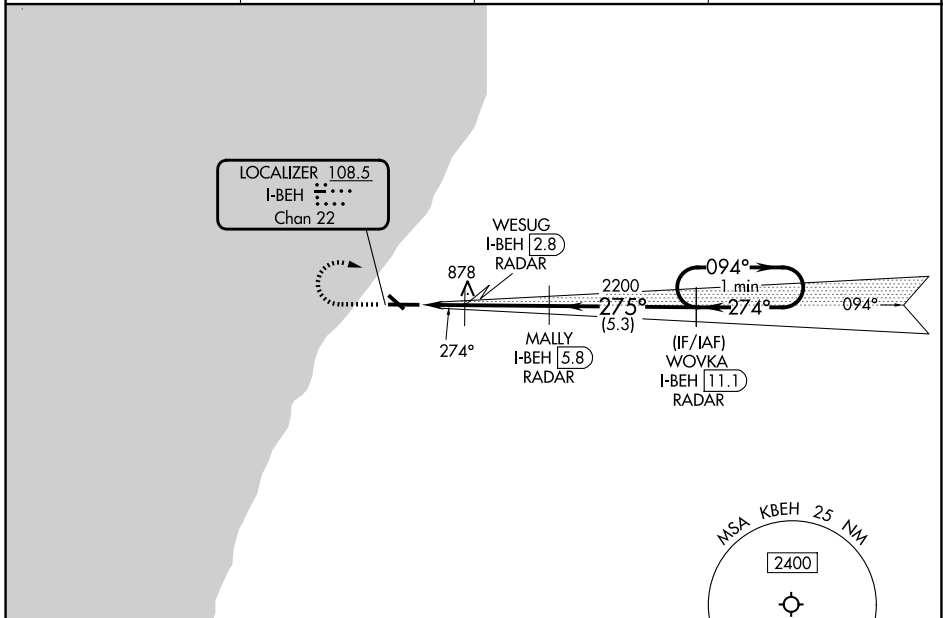
LOC I-BEH <b>108.5</b> Chan <b>22</b>	APP CRS <b>274°</b>	Rwy Ldg TDZE Apt Elev	<b>6006</b> <b>649</b> <b>649</b>
---	------------------------	-----------------------------	---

# ILS or LOC RWY 28

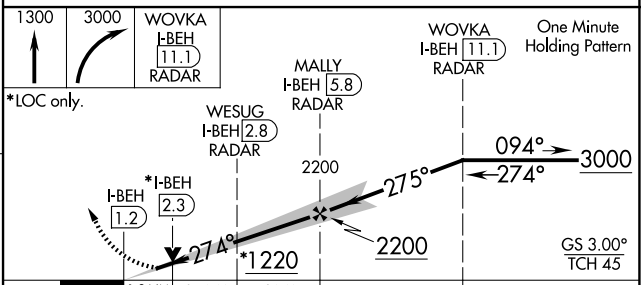
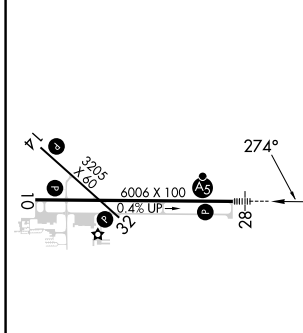
SOUTHWEST MICHIGAN RGNL (BEH)

RNAV 1-GPS required.	MALSR 	MISSED APPROACH: Climb to 1300 then climbing right turn to 3000 direct WOVKA and hold.
DME Required for LOC only.		
Circling Rwy 14 and 32 NA at night.		
NA For inop ALS, increase S-LOC 28 Cat C/D visibility to 1/8 SM.		

ASOS <b>121.55</b>	SOUTH BEND APP CON* <b>118.55 257.8</b>	CLNC DEL <b>119.7</b>	UNICOM <b>123.0 (CTAF) 0</b>
-----------------------	--	--------------------------	---------------------------------



ELEV <b>649</b>	TDZE <b>649</b>
-----------------	-----------------



CATEGORY	A	B	C	D
S-ILS 28		849-1/2	200 (200-1/2)	
S-LOC 28	1060-1/2	411 (500-1/2)	1060-3/4	411 (500-3/4)
CIRCLING	1140-1 491 (500-1)	1160-1 511 (600-1)	1300-1 3/4 651 (700-1 3/4)	1340-2 691 (700-2)

REIL Rws 10, 14 and 32   
MIRL Rwy 14-32   
HIRL Rwy 10-28

EC-1, 14 MAY 2026 to 11 JUN 2026

EC-1, 14 MAY 2026 to 11 JUN 2026