

MAYPORT, FLORIDA

# COPTER RNAV (GPS) RWY 23

WAAS CH 45485 W23B	APCH CRS 229°	Rwy ldg TDZE Arprt Elev	8001 15 15
--------------------------	------------------	-------------------------------	------------------

-(USN)

MAYPORT NS (ADM DAVID L MC DONALD FLD) (KNRB)

RNP APCH

RADAR required

⚠ \* LPV and LNAV/VNAV procedures are authorized only when the St. Johns River is clear of vessels from the mouth of Haulover Creek to St. Johns Point. ATC will advise aircraft on final approach if a conflict is present and coordinate a missed approach as required. Does not apply to practice approaches in VMC.

MISSED APPROACH: Climb to 600 then climbing left turn to 1500 direct to CONWY and hold.

ATIS* 236.775	JACKSONVILLE APP CON/DEP CON 124.9 308.4	TOWER* 118.75 239.3 Ⓡ	GND CON 126.5 233.7	ASR/PAR
------------------	---	--------------------------	------------------------	---------

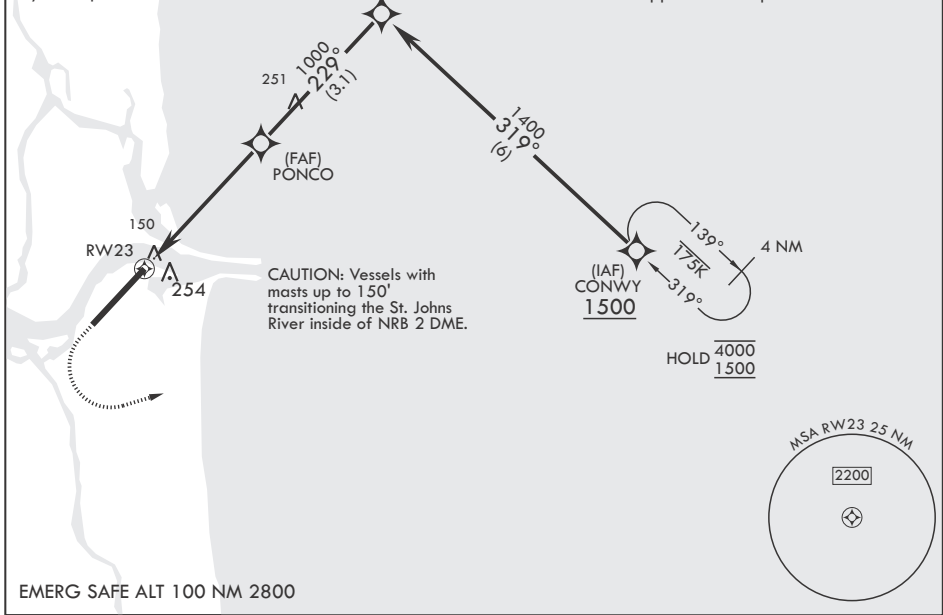
For uncompensated Baro-VNAV systems, LNAV/VNAN NA below -15°C or above 54°C.

Max airspeed 90 KIAS.

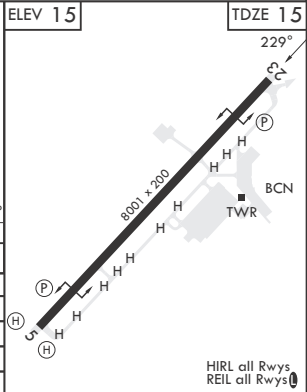
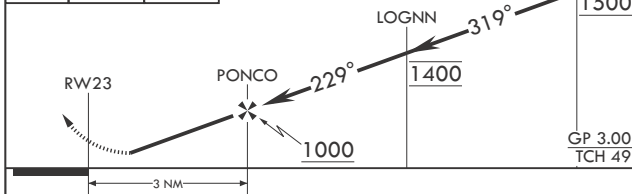
Visibility Reduction by Helicopters NA.

(IF)  
LOGN N  
1400

This approach is not authorized at night when the VGSI is inop, unless the St. Johns River is clear of vessels from the mouth of Haulover Creek to St. Johns Point. ATC will advise aircraft on final approach if a conflict is present and coordinate a missed approach as required.



EMERG SAFE ALT 100 NM 2800



CATEGORY	COPTER	
LPV DA*	319-1	304 (400-1)
LNAV/VNAV DA*	385-1	370 (400-1)
LNAV MDA	520-1	505 (600-1)
<b>C</b> CIRCLING	560-1	545 (600-1)

MAYPORT, FLORIDA

30°23'N - 81°25'W MAYPORT NS (ADM DAVID L MC DONALD FLD) (KNRB)

Amdt 1 05SEP24

# COPTER RNAV (GPS) RWY 23

SE-3, 14 MAY 2026 to 11 JUN 2026

SE-3, 14 MAY 2026 to 11 JUN 2026