

MAYPORT, FLORIDA

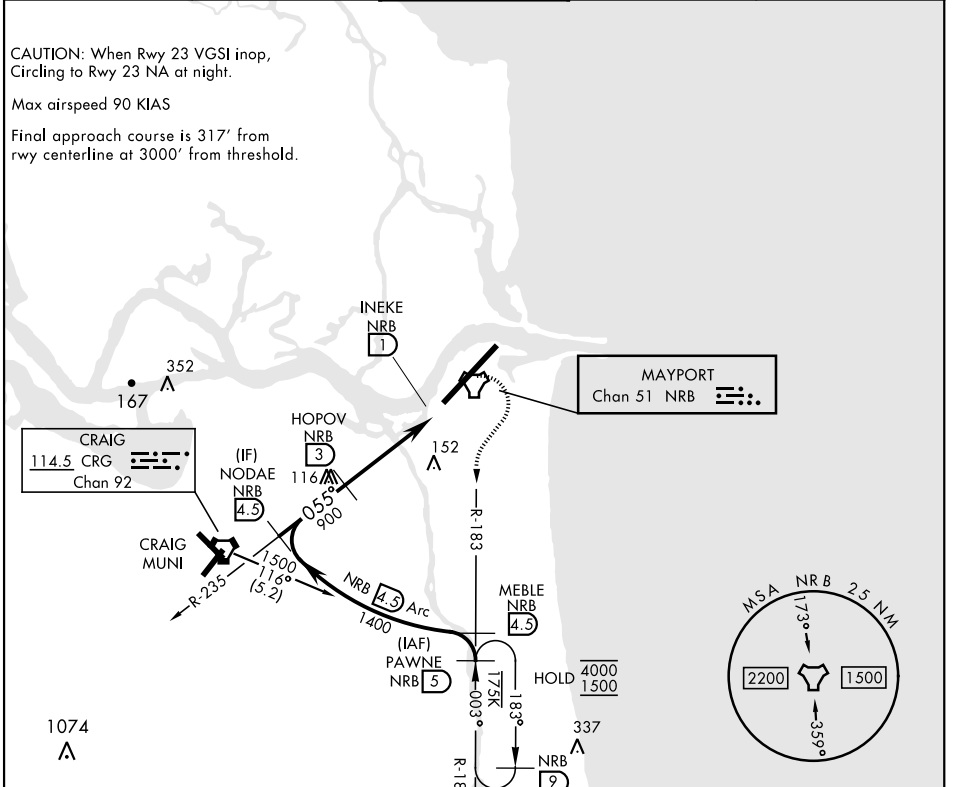
# COPTER TACAN Z RWY 5

TACAN NRB Chan <b>51</b>	APCH CRS <b>055°</b>	Rwy Idg TDZE Arpt Elev	<b>8001</b> <b>12</b> <b>15</b>
-----------------------------	-------------------------	------------------------------	---------------------------------------

[USN] MAYPORT NS (ADM DAVID L. MC DONALD FLD) (KNRB)

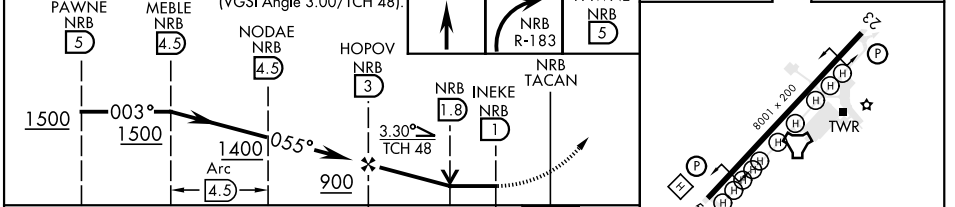
**MISSED APPROACH:** Climb to 500. Then climbing right turn to 1500 via NRB TACAN R-183 to PAWNE and hold.

ATIS ★ <b>236.775</b>	JACKSONVILLE APP CON <b>124.9 308.4</b>	TOWER ★ <b>118.75 239.30</b>	GND CON <b>126.5 233.7</b>	ASR/PAR
--------------------------	--	---------------------------------	-------------------------------	---------



EMERG SAFE ALT 100 NM 2800

PAWNE NRB 5	MEBLE NRB 4.5	NODAE NRB 4.5	HOPOV NRB 3	INEKE NRB 1.8	INEKE NRB 1	NRB TACAN	PAWNE NRB 5	ELEV 15	TDZE 12
-------------	---------------	---------------	-------------	---------------	-------------	-----------	-------------	---------	---------



CATEGORY	COPTER		
S-5	440-1/2	428	(500-1/2)
<b>C</b> CIRCLING	560-1	545	(600-1)

REIL Rwy 5-23  
HIRL Rwy 5-23

MAYPORT, FLORIDA 30°23'N-81°25'W MAYPORT NS (ADM DAVID L. MC DONALD FLD) (KNRB)

Amtd 5 05SEP24

# COPTER TACAN Z RWY 5

SE-3, 14 MAY 2026 to 11 JUN 2026

SE-3, 14 MAY 2026 to 11 JUN 2026