

TACAN Y RWY 23

| | | |
|-----------------------------|-------------------------|---|
| TACAN NRB Chan 51 | APCH CRS 221° | Rwy Ldg TDZE Arpt Elev 8001 15 15 |
|-----------------------------|-------------------------|---|

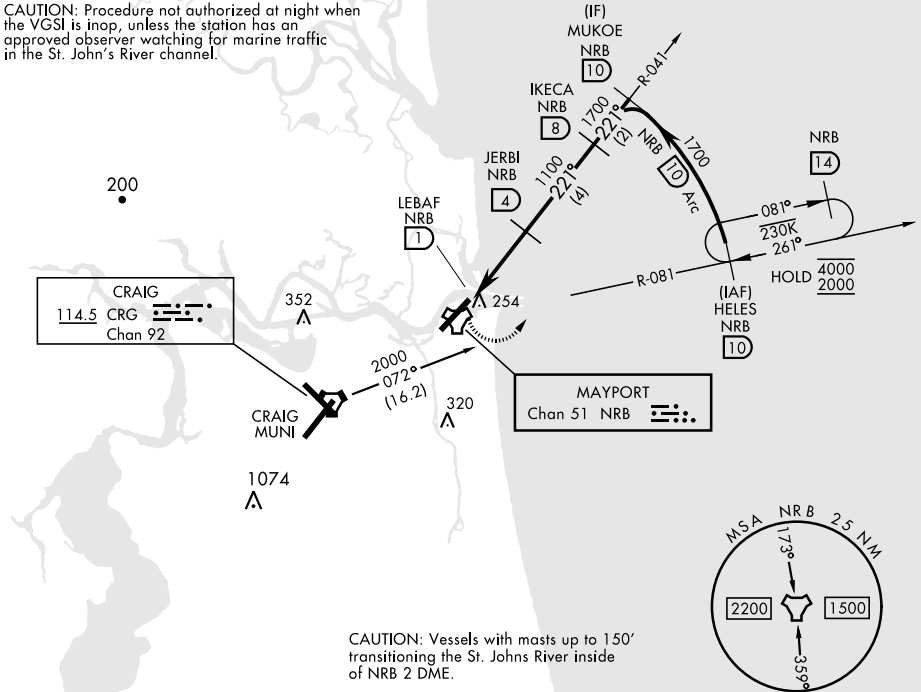
[USN] MAYPORT NS (ADM DAVID L. MC DONALD FLD) (KNRB)

▼ Visibility reduction by helicopters not authorized. MISSED APPROACH: Climbing left turn to 2000 via NRB TACAN R-081 to HELES and hold.

| | | | | |
|--------------------------|--|---------------------------------|-------------------------------|---------|
| ATIS ★ 236.775 | JACKSONVILLE APP CON 124.9 308.4 | TOWER ★ 118.75 239.30 | GND CON 126.5 233.7 | ASR/PAR |
|--------------------------|--|---------------------------------|-------------------------------|---------|

CRG feeder route requires turn in hold.

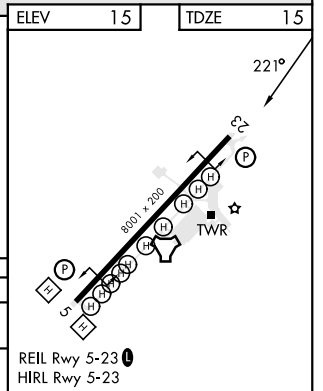
CAUTION: Procedure not authorized at night when the VGSI is inop, unless the station has an approved observer watching for marine traffic in the St. John's River channel.



CAUTION: Vessels with masts up to 150' transiting the St. Johns River inside of NRB 2 DME.

EMERG SAFE ALT 100 NM 2800

| 2000 NRB R-081 | HELES NRB 10 | JERBI NRB 4 | IKECA NRB 8 | MUKOE NRB 10 |
|----------------|--------------|--------------|---------------------|-------------------|
| NRB TACAN | | LEBAF NRB 1 | 1100 | 1700 |
| 3 NM | | 3.01° TCH 48 | 1700 | 1700 |
| CATEGORY | A | B | C | D |
| S-23 | 520-1 | 505 (600-1) | 520-1½ 505 (600-1½) | |
| CIRCLING | 560-1 | 545 (600-1) | 560-1½ 545 (600-1½) | 620-2 605 (700-2) |



TACAN Y RWY 23

SE-3, 14 MAY 2026 to 11 JUN 2026

SE-3, 14 MAY 2026 to 11 JUN 2026