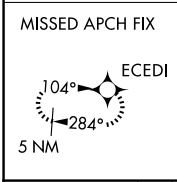
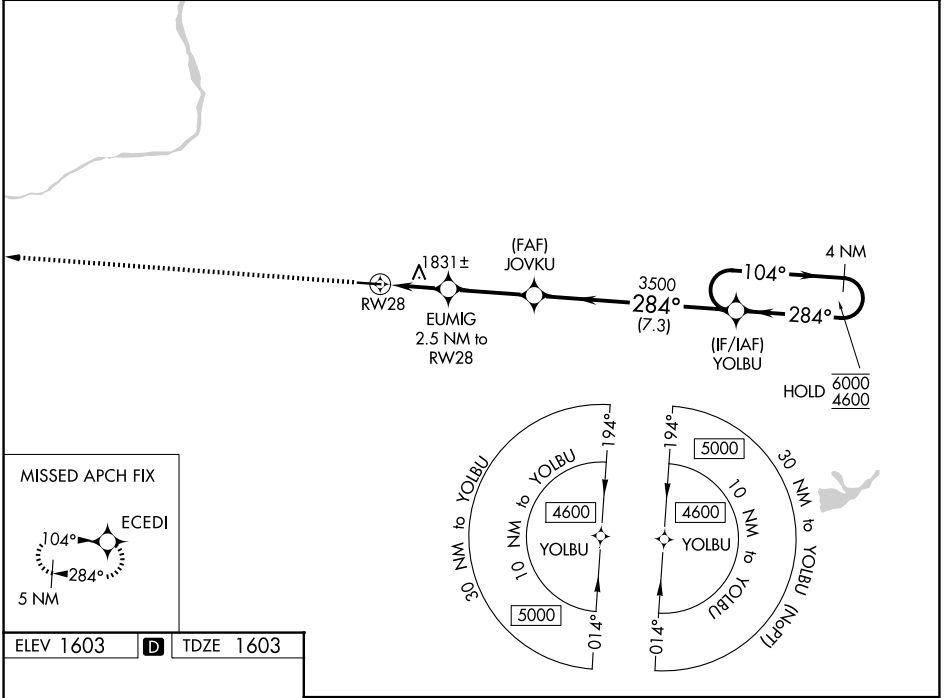


WAAS CH 50140 W28A	APP CRS 284°	Rwy Ldg TDZE Apt Elev	4898 1603 1603
----------------------------------------	------------------------	-----------------------------	-------------------------------------------

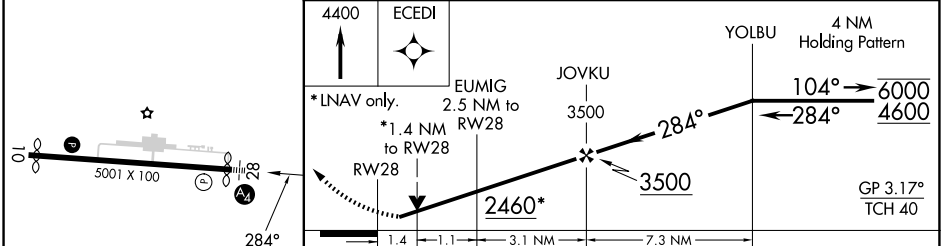
RNAV (GPS) RWY 28

HAZLETON RGNL (HZL)

RNP APCH.		MALS 	MISSED APPROACH: Climb to 4400 direct ECEDI and hold.
AWOS-3 119.975	WILKES-BARRE APP CON 126.3 256.7	CLNC DEL 121.7	UNICOM 123.0 (CTAF) 0



ELEV 1603	D	TDZE 1603
-----------	----------	-----------



CATEGORY	A	B	C	D
LPV DA	1978-1		375 (400-1)	
LNAV/VNAV DA	2143-1¼		540 (600-1¼)	
LNAV MDA	2100-1	497 (500-1)	2100-1½	497 (500-1½)
CIRCLING	2140-1 537 (600-1)	2400-1 797 (800-1)	2480-2½ 877 (900-2½)	2520-3 917 (1000-3)

REIL Rwy 10
MIRL Rwy 10-28

NE-4, 14 MAY 2026 to 11 JUN 2026

NE-4, 14 MAY 2026 to 11 JUN 2026