

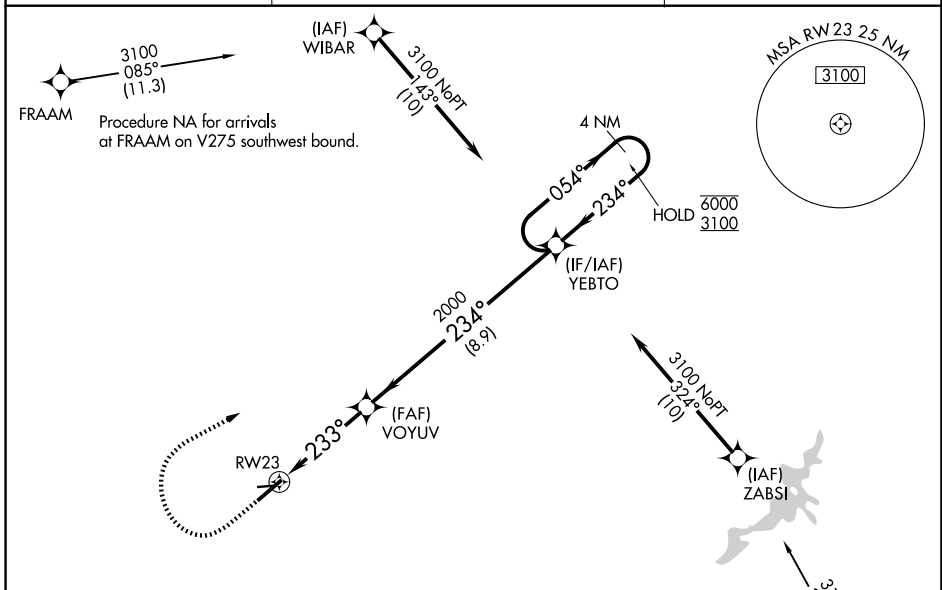
WAAS CH <b>90429</b> <b>W23A</b>	APP CRS <b>233°</b>	Rwy Ldg TDZE Apt Elev	<b>5801</b> <b>650</b> <b>651</b>
--	------------------------	-----------------------------	---

# RNAV (GPS) RWY 23

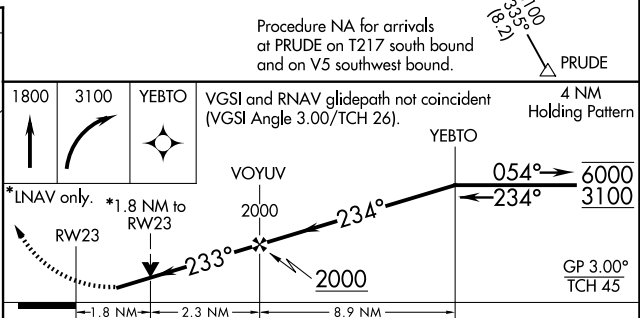
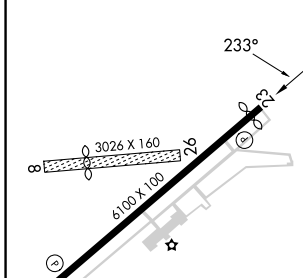
MIDDLETOWN RGNL/HOOK FLD (MWO)

RNP APCH.	<p><b>⚠</b> Circling NA to Rws 8 and 26. Circling Rwy 5 NA at night. Rwy 23 helicopter visibility reduction below <math>\frac{3}{4}</math> SM NA. For uncompensated Baro-VNAV systems, LNAV/VNAV NA below -16°C or above 54°C.</p>	<p>MISSED APPROACH: Climb to 1800 then climbing right turn to 3100 direct YEBTO and hold.</p>
-----------	--	---

AWOS-3PT <b>120.025</b>	COLUMBUS APP CON <b>118.85 269.275</b>	UNICOM <b>123.0 (CTAF) 0</b>
----------------------------	---	---------------------------------



ELEV 651	TDZE 650
----------	----------



CATEGORY	A	B	C	D
LPV DA		986-1 $\frac{1}{8}$	336 (400-1 $\frac{1}{8}$ )	
LNAV/VNAV DA		1083-1 $\frac{1}{2}$	433 (500-1 $\frac{1}{2}$ )	
LNAV MDA	1140-1	490 (500-1)	1140-1 $\frac{3}{8}$	490 (500-1 $\frac{3}{8}$ )
CIRCLING	1380-1	729 (800-1)	1720-3 1069 (1100-3)	1840-3 1189 (1200-3)

MIRL Rwy 5-23 0  
REIL Rws 5 and 23 0

EC-2, 14 MAY 2026 to 11 JUN 2026

EC-2, 14 MAY 2026 to 11 JUN 2026