

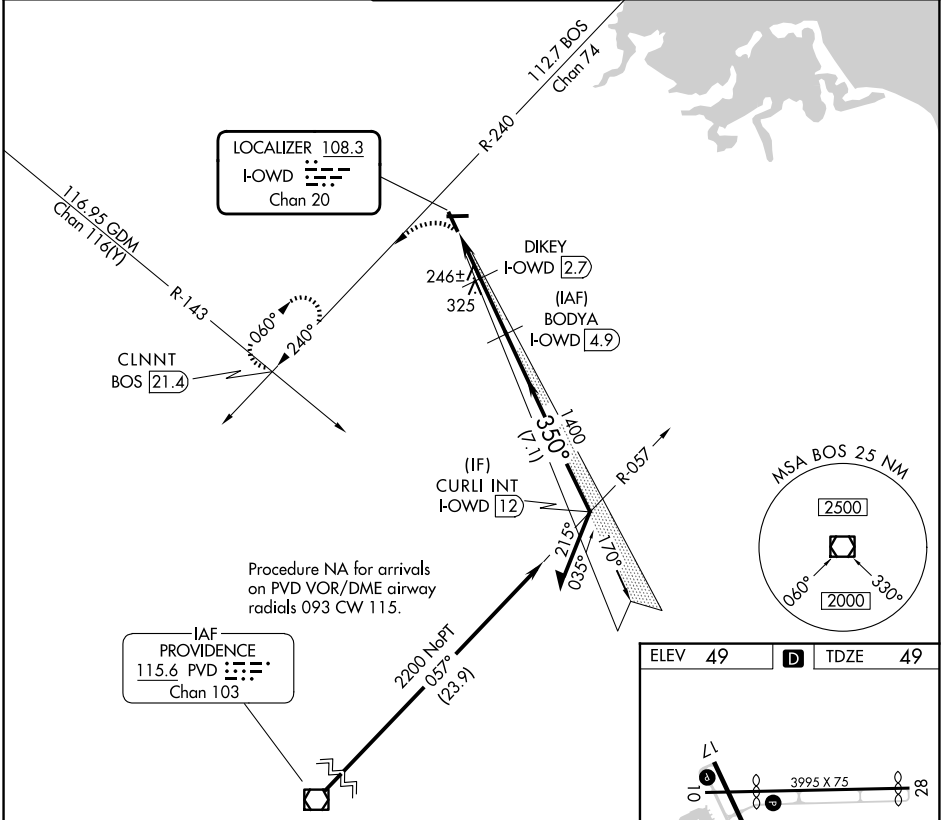
LOC/DME I-OWD 108.3 Chan 20	APP CRS 350°	Rwy Ldg 4007 TDZE 49 Apt Elev 49
--	------------------------	---

LOC RWY 35

NORWOOD MEML (OWD)

DME required.	MALSF	MISSED APPROACH: Climbing left turn to 2000 on heading 200 and on BOS VOR/DME R-240 to CLNNT INT/ BOS VOR/DME 21.4 DME and hold.
Helicopter visibility reduction below 3/4 SM NA. Circling NA at night. For inop ALS, increase S-35 Cat C/D visibility to 1 3/8 SM.		

ATIS 119.95	BOSTON APP CON 124.1 263.1	NORWOOD TOWER ★ 126.0 (CTAF) 0	GND CON 121.8	CLNC DEL 121.8
-----------------------	--------------------------------------	--	-------------------------	--------------------------



NE-1, 14 MAY 2026 to 11 JUN 2026

NE-1, 14 MAY 2026 to 11 JUN 2026

2000 hdg 200	BOS R-240	CLNNT INT	BODYA I-OWD 4.9	Remain within 10 NM
			DIKEY I-OWD 2.7	2100
				170°
				2100
				350°
				1400
				700
				≤ 3.00° TCH 40
				1.3 NM 0.6 NM 2.2 NM
CATEGORY	A	B	C	D
S-LOC 35	500-3/4	451 (500-3/4)	500-1	451 (500-1)
CIRCLING	600-1 551 (600-1)	700-1 651 (700-1)	1220-3	1171 (1200-3)

