

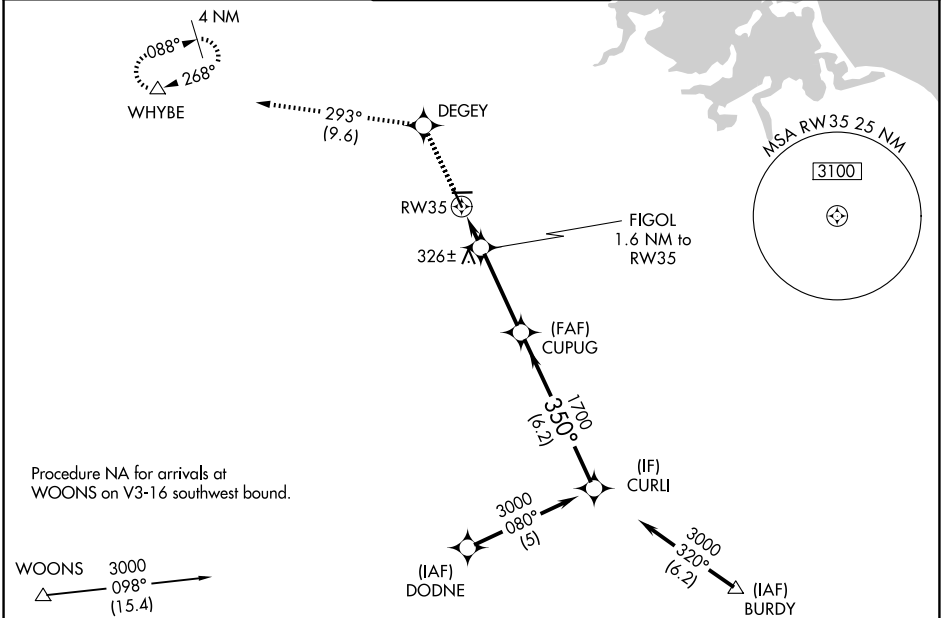
WAAS CH <b>86400</b> <b>W35A</b>	APP CRS <b>350°</b>	Rwy Ldg TDZE Apt Elev	<b>4007</b> <b>49</b> <b>49</b>
--	------------------------	-----------------------------	---------------------------------------

# RNAV (GPS) RWY 35

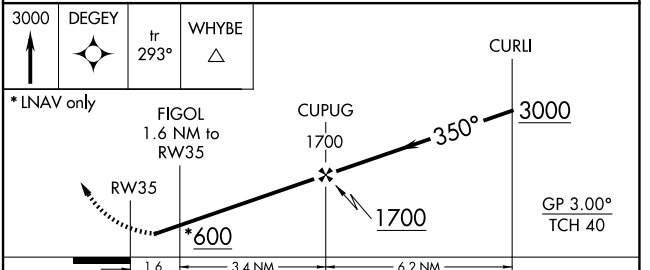
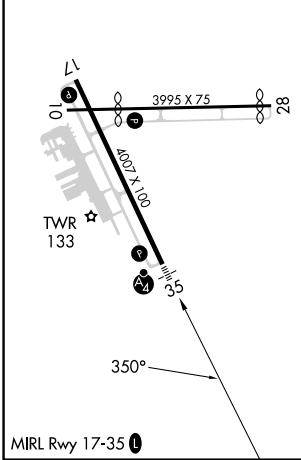
NORWOOD MEML (OWD)

RNP APCH.	MALSF	MISSED APPROACH: Climb to 3000 direct DEGEY and on track 293° to WHYBE and hold, continue climb-in-hold to 3000.
<p>▼ Rwy 35 helicopter visibility reduction below 3/4 SM NA. For inop ALS, increase LPV all Cats visibility to 7/8 SM. For uncompensated Baro-VNAV systems, LNAV/VNAV NA below -15°C or above 48°C. Circling NA at night.</p>		

ATIS <b>119.95</b>	BOSTON APP CON <b>124.1 263.1</b>	NORWOOD TOWER ★ <b>126.0 (CTAF) 0</b>	GND CON <b>121.8</b>	CLNC DEL <b>121.8</b>
-----------------------	--------------------------------------	--	-------------------------	--------------------------



ELEV 49	<b>D</b>	TDZE 49
---------	----------	---------



CATEGORY	A	B	C	D
LPV DA	344-3/4 295 (300-3/4)			
LNAV/VNAV DA	594-1 5/8 545 (600-1 5/8)			
LNAV MDA	580-3/4	531 (600-3/4)	580-1 1/4	531 (600-1 1/4)
CIRCLING	600-1 551 (600-1)	700-1 651 (700-1)	1220-3	1171 (1200-3)

NE-1, 14 MAY 2026 to 11 JUN 2026

NE-1, 14 MAY 2026 to 11 JUN 2026