

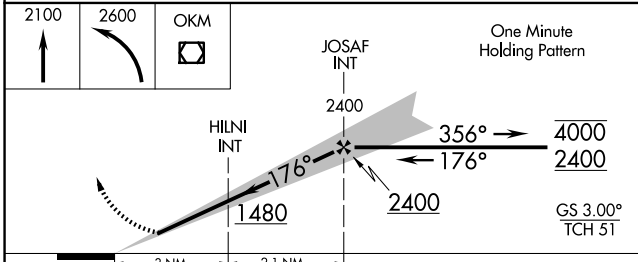
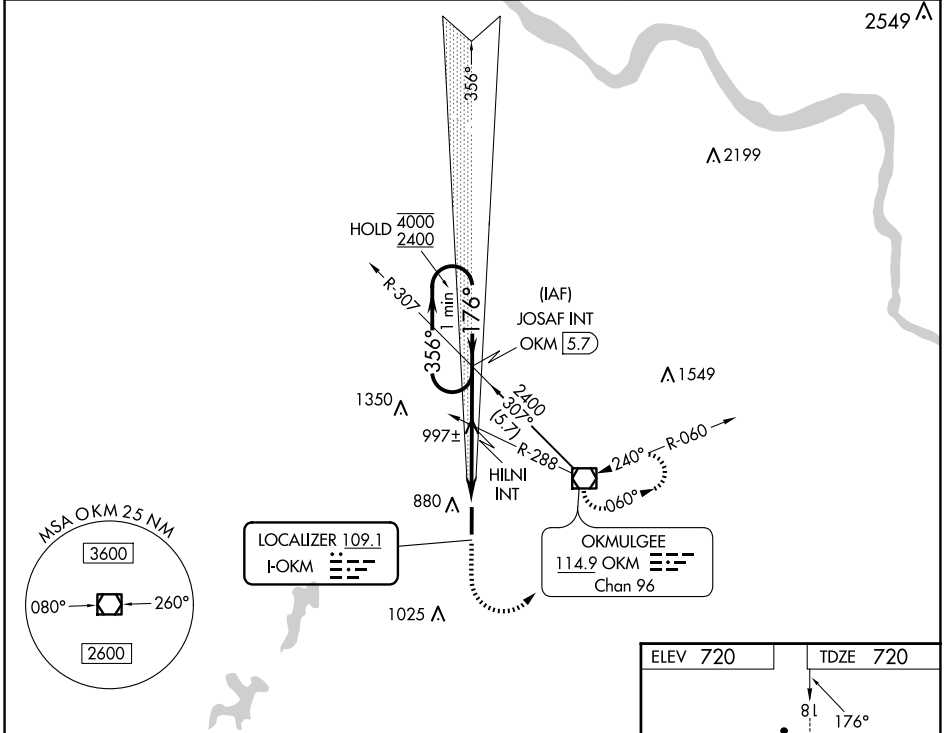
LOC I-OKM <b>109.1</b>	APP CRS <b>176°</b>	Rwy ldg <b>5150</b>
		TDZE <b>720</b>
		Apt Elev <b>720</b>

# ILS or LOC RWY 18

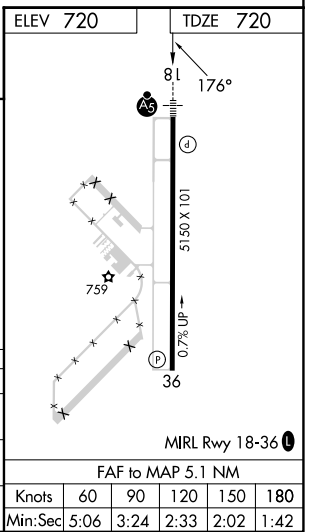
OKMULGEE RGNL/PAUL AND BETTY ABBOTT FLD (OKM)

<b>▼</b> For inop ALS, increase S-ILS all Cats visibility to 3/4 SM, increase S-LOC Cats A and B visibility to 1 SM, and S-LOC Cat C visibility to 1 1/2 SM.	<b>MALSR</b> 	<b>MISSED APPROACH:</b> Climb to 2100 then climbing left turn to 2600 direct OKM VOR/DME and hold, continue climb-in-hold to 2600.
--	------------------	--

<b>AWOS-3PT</b> <b>118.225</b>	<b>TULSA APP CON</b> <b>119.85 338.3</b>	<b>UNICOM</b> <b>123.0 (CTAF) ①</b>
-----------------------------------	---	--



CATEGORY	A	B	C	D
S-ILS 18	920-1/2 200 (200-1/2)			NA
S-LOC 18	1260-1/2 540 (600-1/2)		1260-1 540 (600-1)	NA
<b>☐</b> CIRCLING	1320-1 600 (600-1)	1340-1 620 (700-1)	1340-1 3/4 620 (700-1 3/4)	NA



# ILS or LOC RWY 18

SC-1, 14 MAY 2026 to 11 JUN 2026

SC-1, 14 MAY 2026 to 11 JUN 2026