

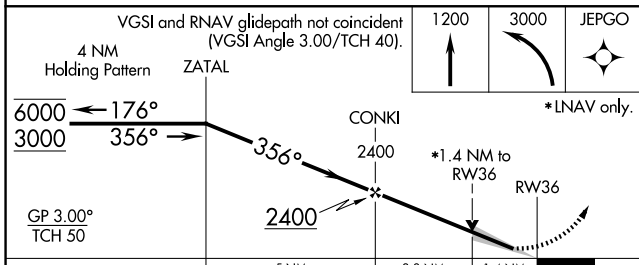
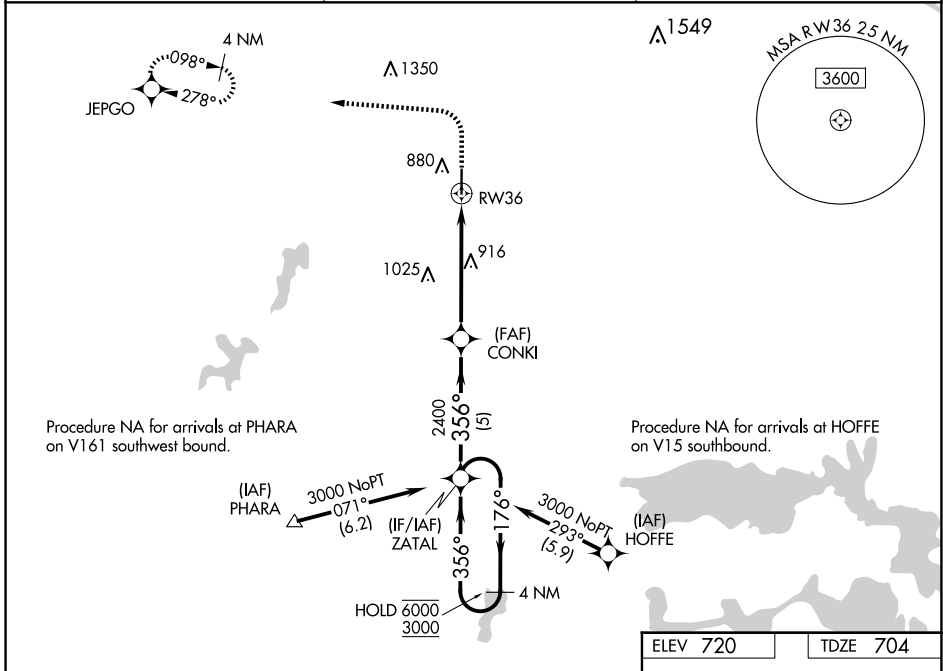
WAAS CH <b>69242</b> <b>W36A</b>	APP CRS <b>356°</b>	Rwy Idg TDZE Apt Elev	<b>5150</b> <b>704</b> <b>720</b>
--	------------------------	-----------------------------	---

# RNAV (GPS) RWY 36

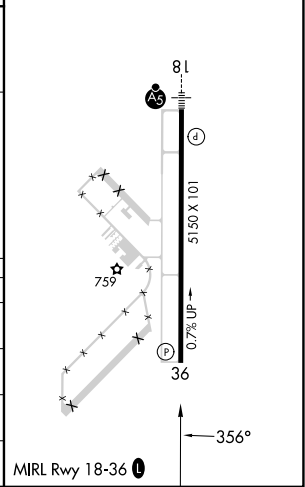
OKMULGEE RGNL/PAUL AND BETTY ABBOTT FLD (OKM)

RNP APCH-GPS.	MISSED APPROACH: Climb to 1200, then climbing left turn to 3000 direct JEPGO and hold.
---------------	--

AWOS-3PT <b>118.225</b>	TULSA APP CON <b>119.85 338.3</b>	UNICOM <b>123.0 (CTAF) 0</b>
----------------------------	--------------------------------------	---------------------------------



ELEV 720	TDZE 704
----------	----------



CATEGORY	A	B	C	D
LPV DA		904- <sup>3</sup> / <sub>4</sub>	200 (200- <sup>3</sup> / <sub>4</sub> )	
LNAV/VNAV DA		991- <sup>7</sup> / <sub>8</sub>	287 (300- <sup>7</sup> / <sub>8</sub> )	
LNAV MDA	1180-1	476 (500-1)	1180-1 <sup>3</sup> / <sub>8</sub>	476 (500-1 <sup>3</sup> / <sub>8</sub> )
<b>C</b> CIRCLING	1240-1 520 (600-1)	1340-1 620 (700-1)	1340-1 <sup>3</sup> / <sub>4</sub> 620 (700-1 <sup>3</sup> / <sub>4</sub> )	1640-3 920 (1000-3)

# RNAV (GPS) RWY 36

SC-1, 14 MAY 2026 to 11 JUN 2026

SC-1, 14 MAY 2026 to 11 JUN 2026