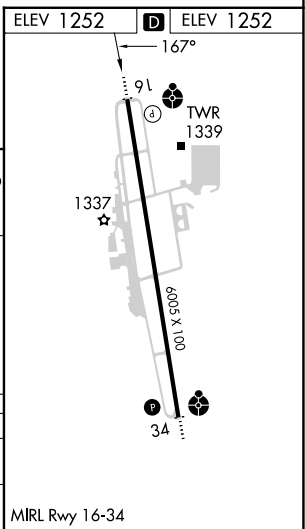
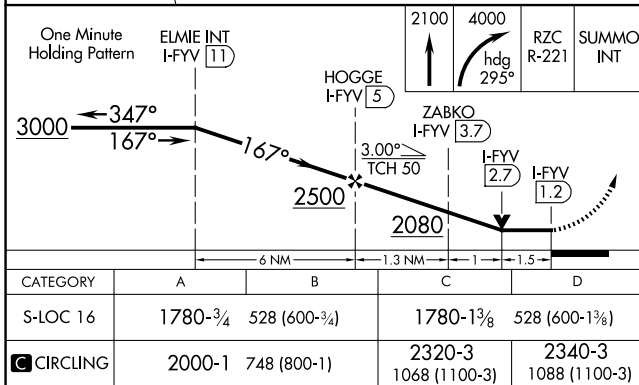
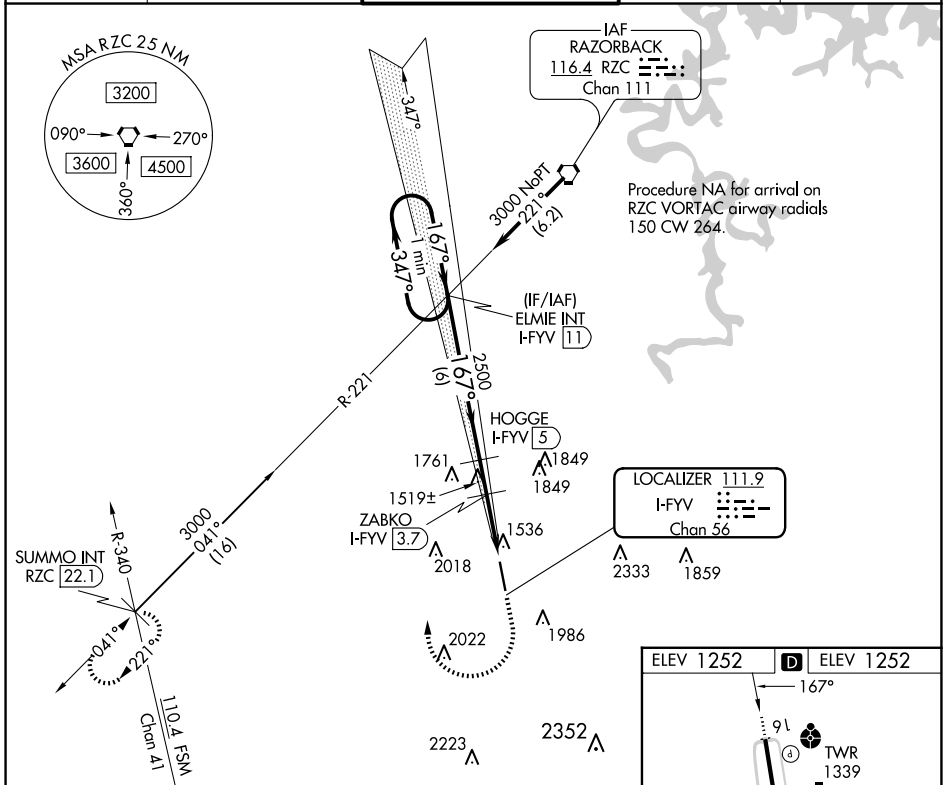


LOC/DME I-FYV <b>111.9</b> Chan <b>56</b>	APP CRS <b>167°</b>	Rwy Idg TDZE <b>1252</b> Apt Elev <b>1252</b>
---	------------------------	---

# LOC RWY 16

DRAKE FLD (FYV)

<p><b>⚠</b> Circling NA east of Rwy 16-34. Rwy 16 helicopter visibility reduction below <math>\frac{3}{4}</math> SM NA. DME required.</p>	<p>ODALS</p>	<p>MISSED APPROACH: Climb to 2100 then climbing right turn to 4000 on heading 295° and RZC VORTAC R-221 to SUMMO INT/RZC 22.1 DME and hold.</p>		
		<p>ATIS <b>119.575</b></p>	<p>RAZORBACK APP CON★ <b>121.0 244.575</b></p>	<p>DRAKE TOWER★ <b>128.0 (CTAF) 371.9</b></p>



CATEGORY	A	B	C	D
S-LOC 16	1780- $\frac{3}{4}$	528 (600- $\frac{3}{4}$ )	1780- $1\frac{3}{8}$	528 (600- $1\frac{3}{8}$ )
<b>C</b> CIRCLING	2000-1	748 (800-1)	2320-3 1068 (1100-3)	2340-3 1088 (1100-3)

MRL Rwy 16-34

SC-1, 14 MAY 2026 to 11 JUN 2026

SC-1, 14 MAY 2026 to 11 JUN 2026