

WAAS CH 86734 W09A	APP CRS 093°	Rwy Ldg TDZE 798 Apt Elev 809	5648 798 809
--	------------------------	---	---

RNAV (GPS) RWY 9

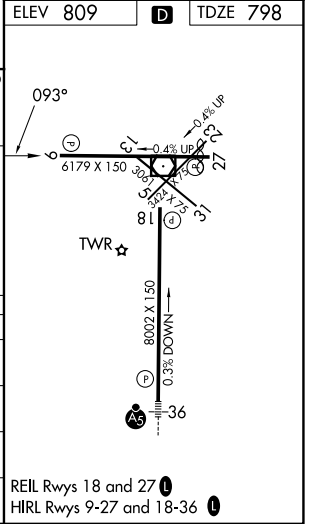
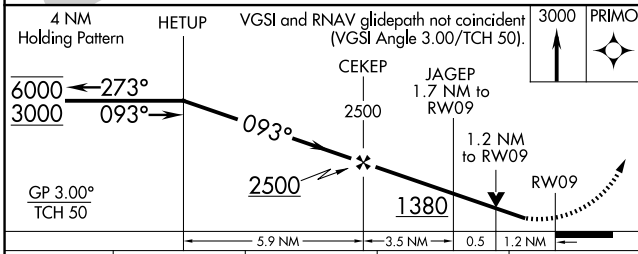
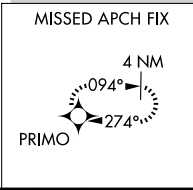
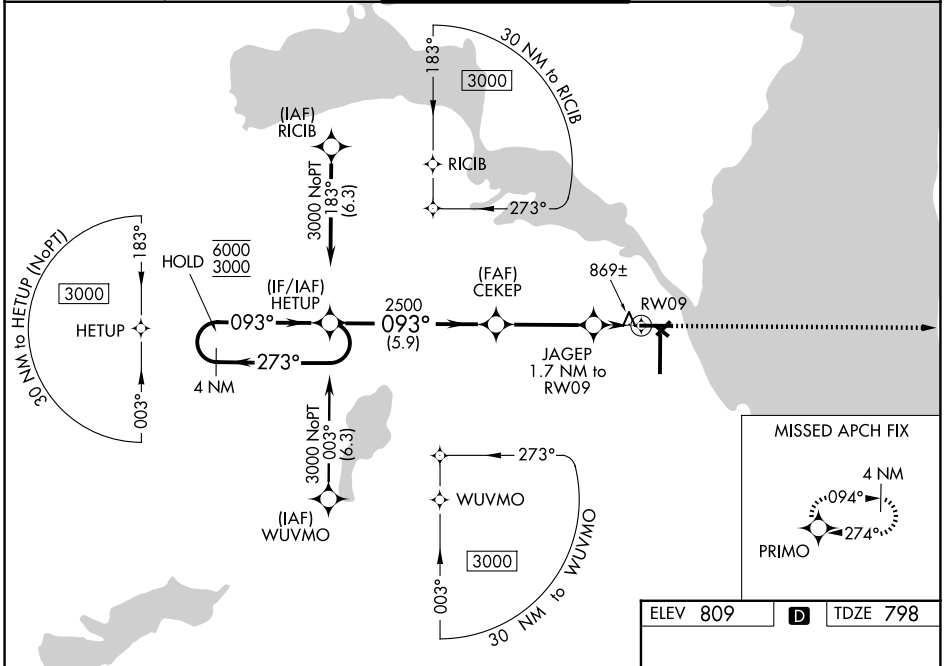
WITTMAN RGNL (OSH)

RNP APCH - GPS.

▼ Rwy 9 helicopter visibility reduction below 3/4 SM NA. Circling Rwy 5, 23, 31 NA at night.
▲ For uncompensated Baro-VNAV systems, LNAV/VNAV NA below -20° C or above 54° C.
 VDP and Baro-VNAV NA when using FLD altimeter setting. When local altimeter setting not received, use FLD altimeter setting: increase LPV DA to 1094 feet; increase LNAV/VNAV DA to 1174 feet; increase all MDAs 40 feet and LNAV visibility Cats C and D 1/8 SM, and Circling visibility Cat D 1/4 SM.

MISSED APPROACH:
Climb to 3000 direct
PRIMO and hold.

ATIS 125.9	MILWAUKEE APP CON 127.0 263.075	OSHKOSH TOWER ★ 118.5(CTAF) 290.9	GND CON 132.3	UNICOM 122.95
----------------------	---	---	-------------------------	-------------------------



CATEGORY	A	B	C	D
LPV DA		1061-7/8	263 (300-7/8)	
LNAV/VNAV DA		1141-1	343 (400-1)	
LNAV MDA	1220-1	422 (500-1)	1220-1 1/4	422 (500-1 1/4)
CIRCLING	1280-1 471 (500-1)	1300-1 491 (500-1)	1360-1 1/2 551 (600-1 1/2)	1440-2 631 (700-2)

EC-3, 14 MAY 2026 to 11 JUN 2026

EC-3, 14 MAY 2026 to 11 JUN 2026