

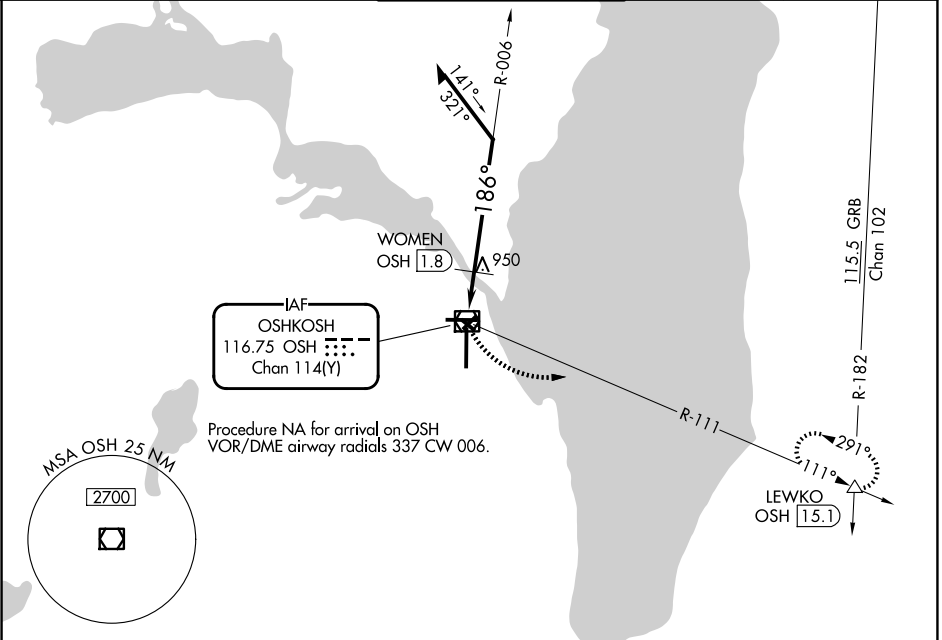
VOR/DME OSH 116.75 Chan 114 (Y)	APP CRS 186°	Rwy Ldg 8002 TDZE 794 Apt Elev 809
-----------------------------------------------------	------------------------	---------------------------------------------------------------

VOR RWY 18
WITTMAN RGNL (OSH)

⚠ Circling Rwy 5, 13, 23, 31 NA at night. VDP NA when using FLD altimeter setting. Rwy 18 helicopter visibility reduction below ¾ SM NA. When local altimeter setting not received, use FLD altimeter setting and increase all MDAs 40 feet; increase WOMEN fix minimums Circling Cat D visibility ¼ SM.

MISSED APPROACH: Climbing left turn to 3000 on OSH VOR/DME R-111 to LEWKO INT/ OSH 15.1 DME and hold.

ATIS 125.9	MILWAUKEE APP CON 127.0 263.075	OSHKOSH TOWER ★ 118.5 (CTAF) 290.9	GND CON 132.3	UNICOM 122.95
----------------------	-------------------------------------------	----------------------------------------------	-------------------------	-------------------------

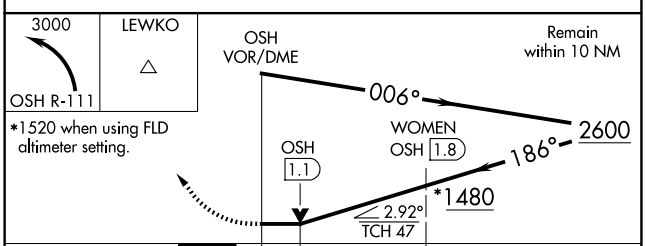
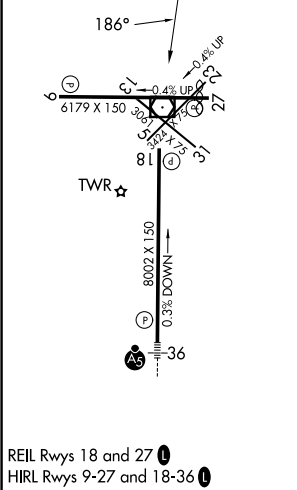


Procedure NA for arrival on OSH VOR/DME airway radials 337 CW 006.

EC-3, 14 MAY 2026 to 11 JUN 2026

EC-3, 14 MAY 2026 to 11 JUN 2026

ELEV 809	D	TDZE 794
----------	----------	----------



CATEGORY	A	B	C	D
S-18	1480-1	686 (700-1)	1480-2	686 (700-2)
CIRCLING	1480-1	671 (700-1)	1480-2 671 (700-2)	1480-2¼ 671 (700-2¼)
WOMEN FIX MINIMUMS				
S-18	1260-1	466 (500-1)	1260-1¾	466 (500-1¾)
CIRCLING	1280-1 471 (500-1)	1300-1 491 (500-1)	1360-1½ 551 (600-1½)	1440-2 631 (700-2)